

## EMT-F 25

Membrane spout, flame retardant, TPE, white, M25



Products may differ in size, colour and appearance to those shown. If you require further information or customisation, please contact us directly.



<b>Material</b>	TPE, flame-retardant
<b>Temp. range min</b>	-40 °C
<b>Temp. range max</b>	80 °C
<b>Glow wire test</b>	960 °C
<b>Protection class</b>	IP66
<b>Ø Connection thread D</b>	25
<b>Length screw-in thread L</b>	9,5 mm
<b>Ø cable diameter min</b>	1 mm
<b>Ø cable diameter max</b>	18 mm
<b>External diameter ED</b>	30 mm
<b>Total length TL</b>	11 mm
<b>Ø Drilling</b>	25 mm - 26,2 mm
<b>Wall thickness S</b>	2 mm
<b>Product Color</b>	white
<b>Order no. RAL 9001</b>	10063010
<b>Type</b>	EMT-F 25
<b>Packing unit</b>	100
<b>ETIM-Classification</b>	EC000451

13.08.2021

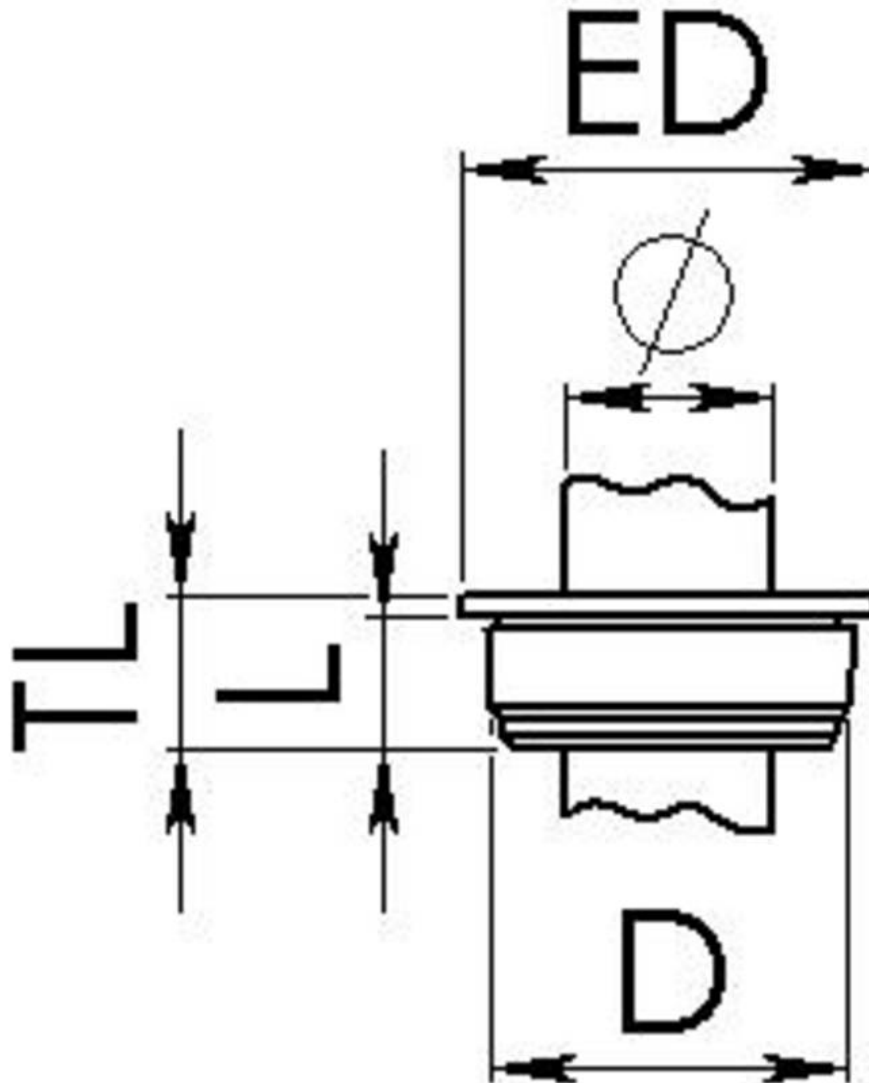
Your Contact:

**WISKA Hoppmann GmbH**

Kisdorfer Weg 28 · 24568 Kaltenkirchen · Germany

☎ +49-4191-508-0 · 📠 +49-4191-508-209

contact@wiska.de · www.wiska.com



Your Contact:

**WISKA Hoppmann GmbH**

Kisdorfer Weg 28 · 24568 Kaltenkirchen · Germany

☎ +49-4191-508-0 · 📠 +49-4191-508-209

contact@wiska.de · www.wiska.com