



Quick Disconnects

Bullet Male Quick Disconnects

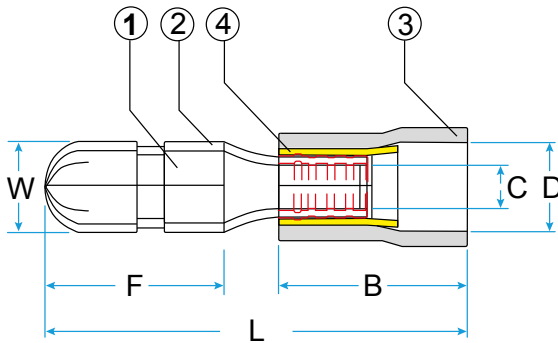
- Materials:
Conductor: Brass
Sleeve: Copper tubular
Insulation: Vinyl
Plating: Tin
- Operating Temperature:
-10°C to +75°C
- Max. voltage rating: 300V
- Flared barrel for easy wire insertion
- Low insertion force and easy crimping whilst ensuring secure termination



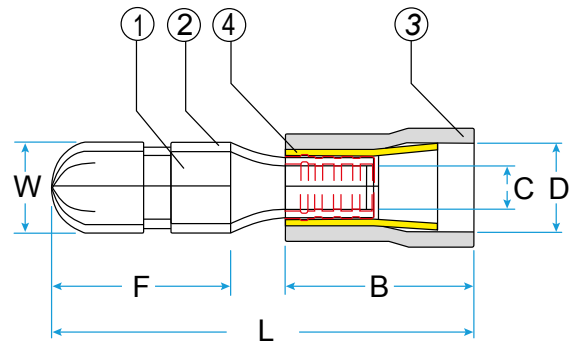
Max. Current Rating	
Red	10A
Blue	15A
Yellow	24A



Standard Internal Copper Sleeve



Long Internal Copper Sleeve



Material ① Brass ② Tin ③ Vinyl ④ Copper

Part No.	Colour	Wire Range (mm ²)	Dimensions (mm)					
			B	C	D	W	L	F
YCRBUM40RE	Red	0.5-1.5	10.0	1.7	3.9	4.0	21.0	8.5
YCRBUM50BL	Blue	1.5-2.5	10.0	2.3	4.7	4.0	21.0	8.5
YCRBUM50YE	Yellow	4.0-6.0	13.0	3.4	6.2	5.0	25.5	10.0