



**UK
CA** **CE**

125A, 4 Pole Steel Enclosed Changeover Switch

ERSMCO1254S

Specifications and Dimensions

It is the responsibility of the person installing the electrical equipment to ensure that the installation meets the requirements of the IET wiring regulations and is therefore 'fit for purpose'. Factors such as correct selection of components, cable sizing, protective devices and Earth bonding are all critical and should be checked prior to full testing and power-up. Any other regulations applicable to the equipment being installed such as the Machinery Directive and current health and safety legislation must also be adhered to.

All connections (including factory made) must be checked for the correct tightness prior to commissioning of the electrical installation.

All connections should be inspected periodically to ensure correct tightness.

DO NOT USE POWER TOOLS ON THESE PRODUCTS

- IP65 Rated
- ICE/EN 60947-3
- Epoxy coated strong steel enclosure

For any further comments or assistance please contact:

eris-eu.com



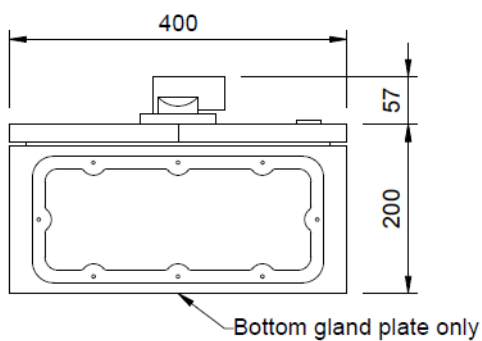
Data		Range	Units	ERSMCO1254S
Rated Operational Voltage Ue				
IEC & EN		Volts	V	690
Main Switch: Isolating Voltage up to		Volts	V	750
Rated Impulse Withstand Voltage Uimp		Volts	V	6
Rated Uninterrupted Current Iu		Volts	V	125
Rated Operational Current Ie				
IEC & EN	AC-22A	Up to 690V	A	125
	AC-21A	Up to 690V	A	125
	AC-1A	Up to 690V	A	125
Rated Operational Power AC-23A (50-60Hz)				
IEC & EN	3 Phase	220-240V	kW	55
		280-440V	kW	75
		500-690V	kW	90
Rated Operational Power AC-3A (50-60Hz)				
IEC & EN	3 Phase	220-240V	kW	45
		440V	kW	55
		690V	kW	55
Short Circuit Capacity (IEC)				
Max Fuse Size (Type gL)		Amps	A	125
Rated Fused Short Circuit Current		Amps	kA	30
Terminal Specification				
Single/Multiple Strand Wire			Min-mm ²	2.5
			Max-mm ²	5.0
Fine Strand with Sleeve			Min-mm ²	4
			Max-mm ²	50
Recommended Tightening Torque			Nm	2.5

For any further comments or assistance please contact:

eris-eu.com

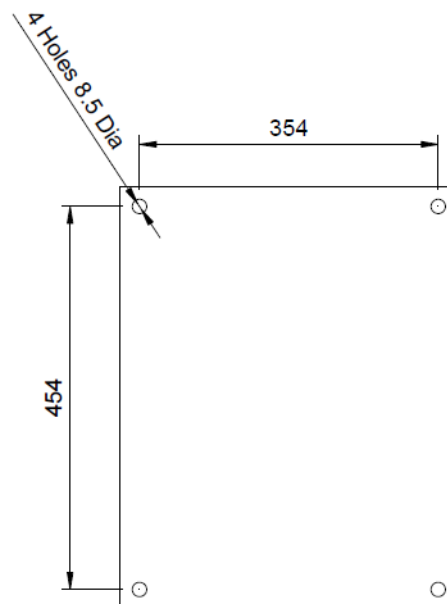
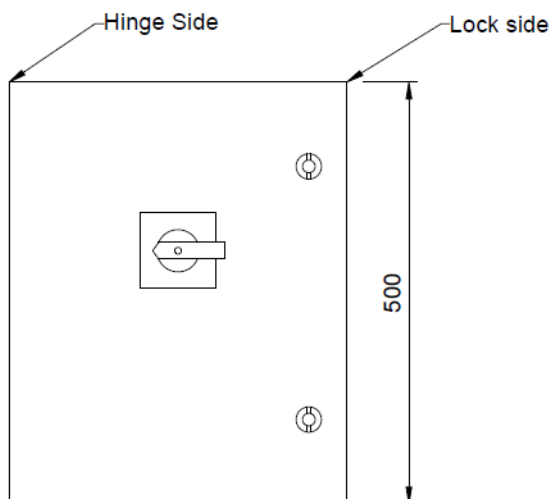


Dimensions



Note: Change over switch is break before make.
3 position, centre off.

When mounted outside, maintenance is required
to preserve the enclosures painted finish



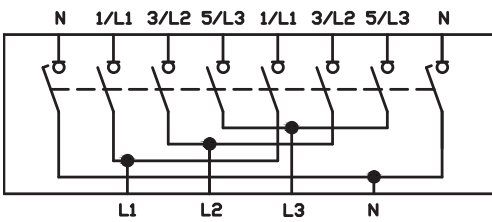
For any further comments or assistance please contact:

eris-eu.com

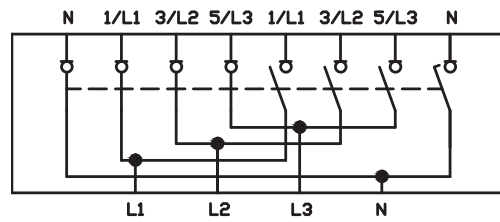


Terminal Configuration

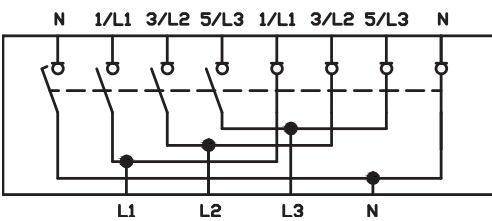
4 Pole Changeover Switch
(Position '0' shown)



4 Pole Changeover Switch
(Position '1' shown)



4 Pole Changeover Switch
(Position '2' shown)



	N	1/L1	3/L2	5/L3	1/L1	3/L2	5/L3	N
I	X	X	X	X				
0								
II					X	X	X	X

Change Over 4 Pole Switch Program

Note: Neutral contact is early make/late break

For any further comments or assistance please contact:

eris-eu.com