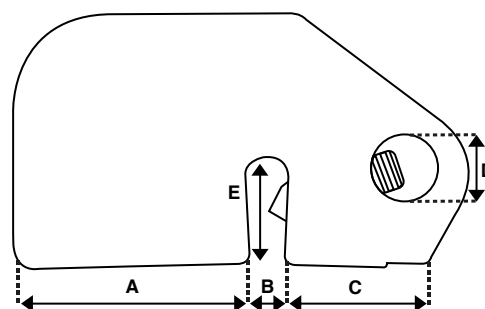


# Universal Fuse Circuit Breaker Lockout

## Specifications and Dimensions

- A universal fuse lockout which is fitted using an internal grub screw
- Suitable for use on fuse holders from 20A to 400A, manufactured from nylon
- Maximum clamping size  $\leq 5\text{mm}$

Part No	Dimensions	
ERSLOK140	A	29mm
	B	6mm
	C	19mm
	D	9mm
	E	10mm



For any further comments or assistance please contact:

**[eris-eu.com](http://eris-eu.com)**