

IS 2140 ECO

black
 EAN 4007841 034689
 Article number 034689



infrared sensor
140°



max. 14 m

2000 W

2000 W max. (LED-ready)



IP54



Sensor 90° ver.,
180° hor.



2 - 2000 lux



8 sec - 35 min



Ideal 2 m



energy saving

5 years

manufacturer's warranty steinel-professional.de/garantie

Function description

Simply child's play. Getting started with the classic sensor. The classic one, now with even more class. Infrared motion detector IS 2140 ECO for indoors and out, ideal for targeted detection close to buildings, 140° angle of coverage, reach up to 14 m, selectable time and twilight threshold, sensor swivels through 180° and tilts through 90° for exact adjustment of the detection zone.

Technical specifications

Dimensions (L x W x H)	83 x 99 x 86 mm
Manufacturer's Warranty	5 years
Settings via	Potentiometers
Version	black
PU1, EAN	4007841034689
Type	Motion detectors
Application, place	Outdoors, Indoors
Application, room	outdoors, front door, all round the building, terrace / balcony, courtyard & driveway
Colour	black
Colour, RAL	9005
Installation site	wall
Installation	Surface wiring, Wall
IP-rating	IP54
Ambient temperature	-20 – 50 °C
Material	Plastic

Fluorescent lamps, parallel-corrected	500 VA
LED lamps < 2 W	16 W
LED lamps > 2 W < 8 W	64 W
LED lamps > 8 W	64 W
Capacitive load in µF	88 µF
Technology, sensors	passive infrared, Light sensor
Mounting height	1,80 – 3,00 m
Mounting height max.	3,00 m
Optimum mounting height	2 m
Detection angle	140 °
Sneak-by guard	Yes
Capability of masking out individual segments	Yes
Electronic scalability	No
Mechanical scalability	No
Reach, radial	r = 3 m (11 m ²)
Reach, tangential	r = 14 m (239 m ²)

IS 2140 ECO

black
EAN 4007841 034689
Article number 034689



Technical specifications

Mains power supply	230 – 240 V / 50 – 60 Hz
Switching output 1, resistive	2000 W
Switching output 1, number of LEDs / fluorescent lamps	6 pcs.
Fluorescent lamps, electronic ballast	430 W
Fluorescent lamps, uncorrected	500 VA
Fluorescent lamps, series-corrected	1000 VA

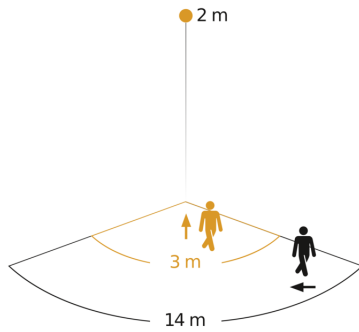
Twilight setting	2 – 2000 lx
Time setting	8 s – 35 Min.
Basic light level function	No
Main light adjustable	No

IS 2140 ECO

black
 EAN 4007841 034689
 Article number 034689

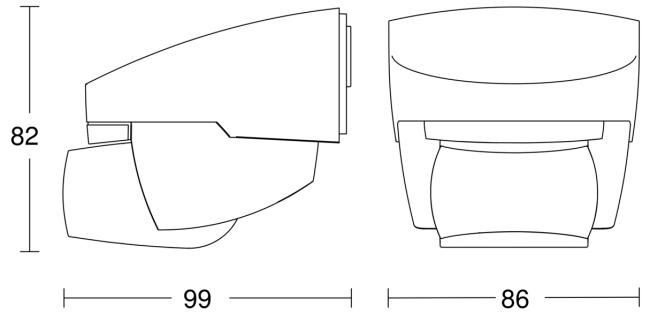


Detection Zone

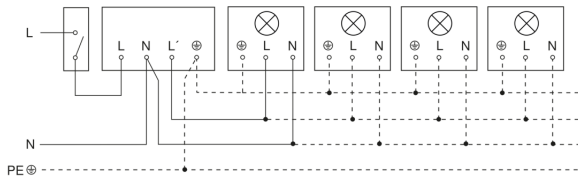


Possible mounting height: 1,80 m - 3,00 m
 Orange: radial
 Black: tangential

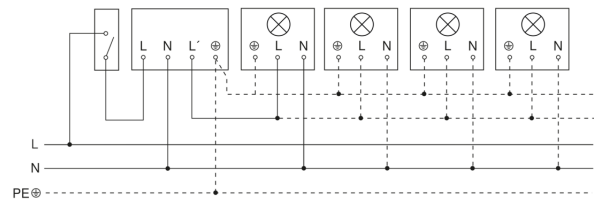
Dimension Drawing



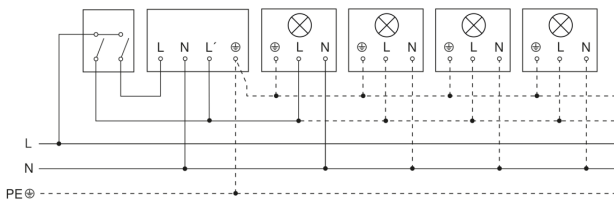
Light without neutral conductor



Light with neutral conductor



Connection using two-circuit switch for manual and automatic operation



Circuit diagram Connection via a changeover switch for continuous and automatic operation

