



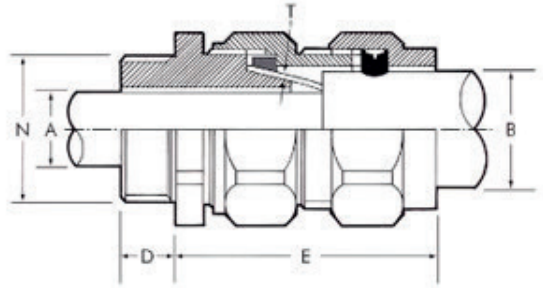
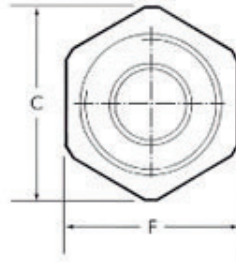
CW Type Cable Glands

For use with Plastic and Rubber (Elastomer) sheathed cables. Indoor & Outdoor whenever it is required to provide sealing on cable outer sheath.

CW glands are weatherproof glands and can be used in corrosive conditions when protected with shroud. Positive armour locking, effective earth continuity, increased mechanical strength.

Dimensions

- Metric: 20mm to 75mm (S/L)
- Imperial: 3/4" to 3" (S/L)



Size	Thread Size		Cable Acceptances			Detailsn	
	Diameter	Length	Max.Dia	Max.Dia	Armour Wire Size	A/F	A/C
20/16	16	10	8.6	13.5	0.9	20	23
20S	20	10	12.5	17	0.90/1.25	24	28
20	20	10	14.4	20.5	0.90/1.25	27	31
25S	25	10	17.8	23.8	1.25/1.60	31	34
25	25	10	20.4	27	1.25/1.60	34.3	38.5
32	32	10	26.5	33	1.60/2.00	41.5	46.5
40S	40	10	31	37	1.60/2.00	45	50
40	40	15	32.5	40.8	1.60/2.00	49	54
50S	50	15	37.8	48	2.00/2.50	58	65
50	50	15	44	53.5	2.00/2.50	62.3	69.5
63S	63	15	50.5	60.5	2.5	70	78
63	63	15	56.2	65.5	2.5	76.3	85
75S	75	15	62.5	72	2.5	85	95
75	75	15	67.5	78.5	2.50/3.15	90.5	99
90	90	20	80	94	3.15	112	125