



Installation instructions,
100A REC with SPD
REC2SPD
THIS IS A CLASS 1 ENCLOSURE



IMPORTANT INFORMATION

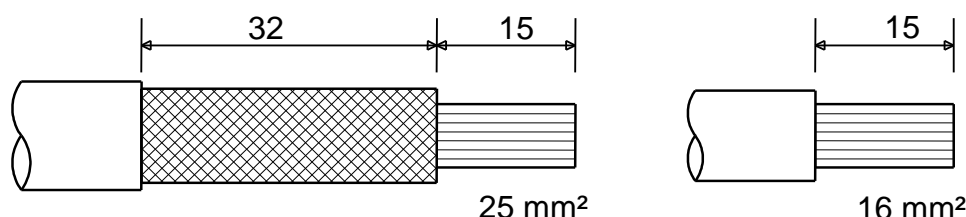
This unit should be installed by a qualified competent person in accordance with all relevant legislation and regulations including building regulations and wiring regulations BS7671. If in doubt contact a qualified competent person.

- Turn off all power supplying this equipment before working on or inside the equipment.
- Always use a properly rated volt-sensing device to confirm the power is off.
- Replace all devices, doors and covers before turning on the power to this equipment.
- To avoid ingress of swarf and similar material, always remove gland plates to allow cutting/slotting for cable entries.

Failure to follow these instructions could result in serious injury or death.

DO NOT USE POWER TOOL SCREWDRIVERS ON ELECTRICAL CONNECTIONS

1 CABLE STRIPPING DETAILS



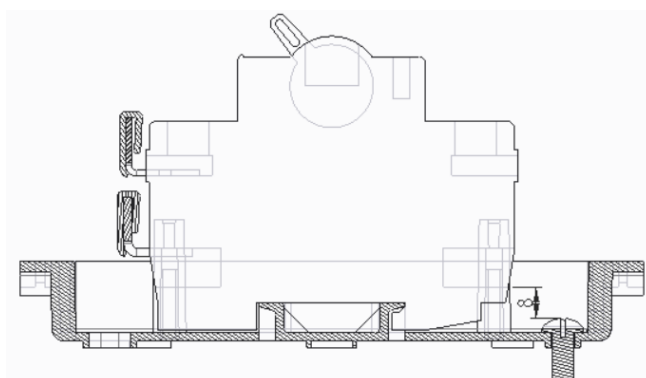
2 ENSURE THE TIGHTNESS OF ALL SCREW CONNECTIONS

Device	Max cable Capacity	Recommended tightening torque
Main Switch	50 mm ²	2.3 Nm
SPD	1.5 mm ² to 16 mm ²	3.0 Nm
	25 mm ² to 35 mm ²	4.5 Nm

Use No. 2 Pozzi-drive bit DO NOT connect using power driven screwdrivers

3 FIXING SCREW – TERMINAL CAGE CLEARANCE

When installing this unit ensure there is a minimum 8 mm clearance between the head of the screw fixing the unit in its mounting position and the terminal cage. (see fig below)



Electrium Sales Limited, Walkmill Lane, Cannock, WS11 0XE
Tel: 01543 455000 Fax: 01543 455001

LF1579-3



Waste electrical products should not be disposed of with household waste.
Please recycle where waste disposal facilities exist.
Check with your retailer, wholesaler or local authority for recycling advice.

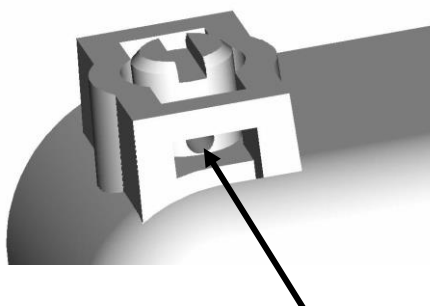




Installation instructions,
100A REC with SPD
REC2SPD
THIS IS A CLASS 1 ENCLOSURE

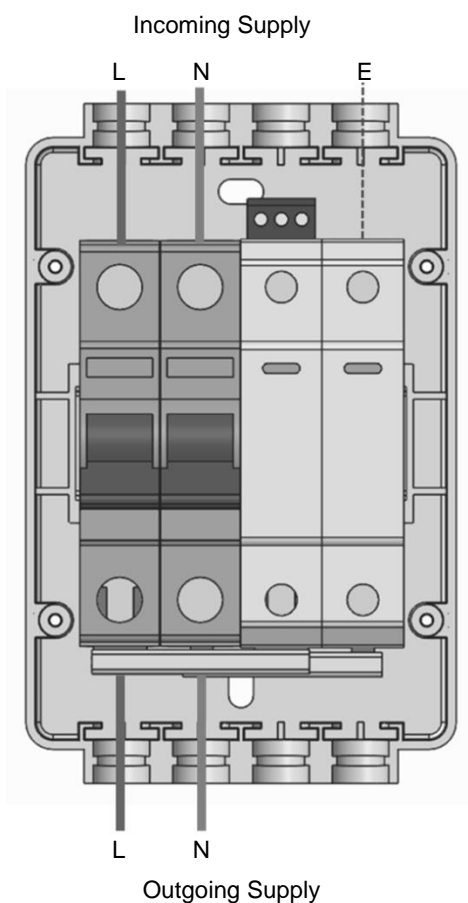


4 **TO PREVENT REMOVAL OF FRONT COVER**

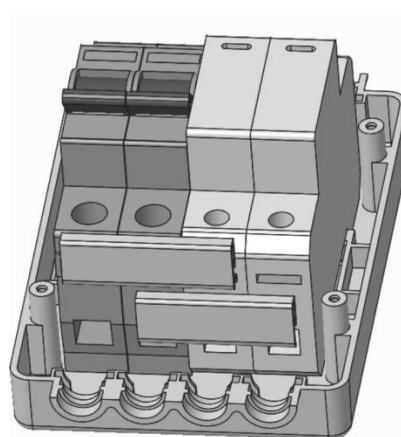


Insert wire or plastic seal through
tamper-proof screw.

5 **CIRCUIT DIAGRAM**



Important Note:
Incoming cables
must only be fitted
into the top of the
Switch as shown.



Electrium Sales Limited, Walkmill Lane, Cannock, WS11 0XE
Tel: 01543 455000 Fax: 01543 455001

LF1579-3



Waste electrical products should not be disposed of with household waste.
Please recycle where waste disposal facilities exist.
Check with your retailer, wholesaler or local authority for recycling advice.

