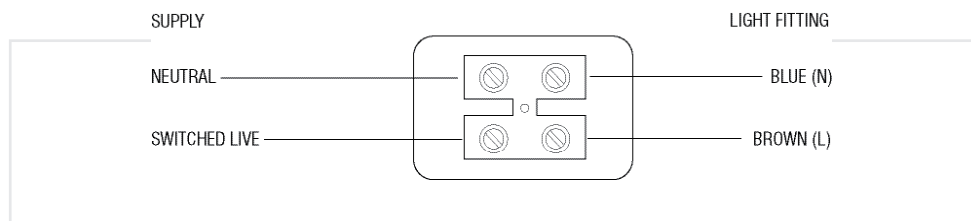


## Wiring

Having correctly identified the wiring from your existing light fitting, pull the wire through the hole and connect to the connection block in the following way:

This unit is double insulated and must not be earthed. If

there are any incoming earth cables, they must be joined together and well insulated with good quality insulation tape. This is to ensure earth continuity throughout your property.



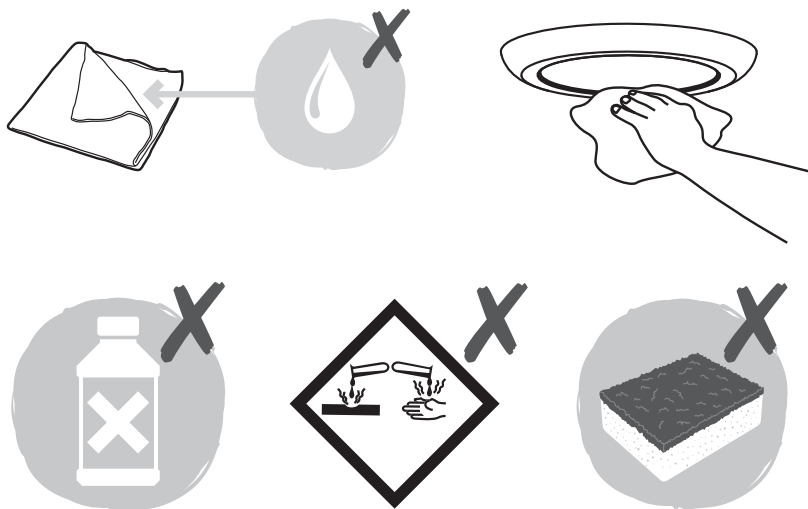
## Check that...

You have correctly identified the wires.

- The connections are tight.
- No loose strands have been left out of the connection block.

## Care and Safety

- We recommend cleaning with a soft dry cloth. Do not use solvents or abrasive cleaners as these could damage the finish.
- For your safety, always switch off the supply before cleaning.



Iss1 08/29/2018

## Instruction leaflet

# SirioDisc Adjustable Recessed

78541



CE

saxby  
lighting

Thank you for purchasing this light fitting. Please read the instructions carefully before use to ensure safe and satisfactory operation of this product. Please retain these instructions for future reference.

## Warning

**This light fitting is Double Insulated and does not require connection to an Earth circuit.**

Please read these instructions carefully before commencing any work.

This unit must be fitted by a competent and qualified electrician.

Install in accordance with IEE Wiring regulations and current Building Regulations.

Check the pack and make sure you have all of the parts listed.

To prevent electrocution switch off at mains supply before installing or maintaining this fitting. Ensure other persons cannot restore the electrical supply without your knowledge.

If replacing an existing fitting, make a careful note of the connections.






This fitting must always be fitted to a plasterboard ceiling. This must not be fitted to a plaster and lath ceiling

This system contains non-replaceable parts and cannot be serviced. If damage occurs the part should be scrapped.

This product is not suitable for dimming.

Waste electrical products should not be disposed of with household waste. Please recycle where facilities exist. Check with your local authority or retailer for recycling advice.

## Technical data

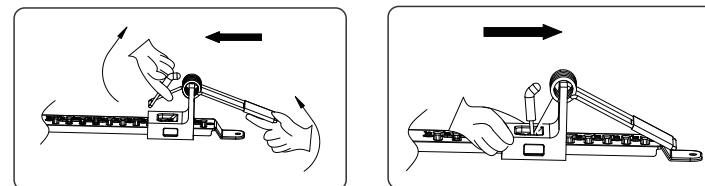
Supply Voltage:	240 V~, 50 Hz
Bulb Type:	LED (18W)
	The light source of this luminaire is not replaceable; when the light source reaches its end of life the whole luminaire shall be replaced.
	Conformity with all relevant EC Directive requirements.
	Waste electrical products should not be disposed of with household waste. Please recycle where facilities exist. Check with your Local Authority or local store for recycling advice.
	Luminaires not suitable for covering with thermally insulating material.
	This product is not suitable for dimming.
	Caution! Risk of electric shock!
<b>IP20</b>	

## Installation

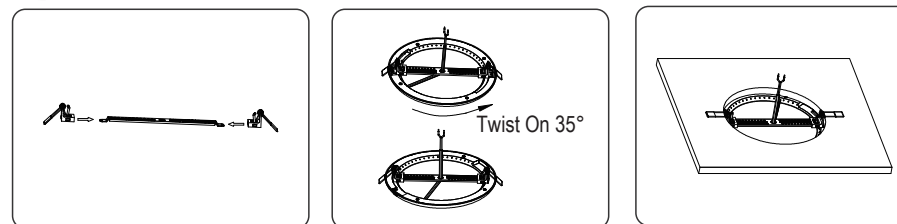
Existing fittings must be completely removed before installation of a new product. Before removing the existing fitting, carefully note the position of each set of wires.

- The ceiling surface must be flat and smooth to ensure a good fit.
- Spring adjustable instruction. See Fig 1.
- Used as a Recessed light, cut a 65-205mm hole using an appropriate tool . See Fig 2.
- Used as a ceiling. See Fig 3.
- Ensure that the product is sitting properly in the hole.
- Ensure that the void depth is a minimum of 65mm.
- It is recommended to cut the hole slightly smaller than needed, then file the hole until the recessed unit fits snugly.
- Avoid locating any cables in positions that would cause a hazard. Position cables and junction boxes (not supplied) away from areas where they may be at risk from being cut, trapped or damaged.
- The mains supply cable must have a minimum cross sectional area of 1.0mm<sup>2</sup>.
- The distance between units must be 0.5m minimum.
- This product must be mounted out of arms reach.
- There is at least 0.2mm distance between the lamp and the inflammable materials.
- Switch on. Your light is now ready for use.

1.



2.



3.

