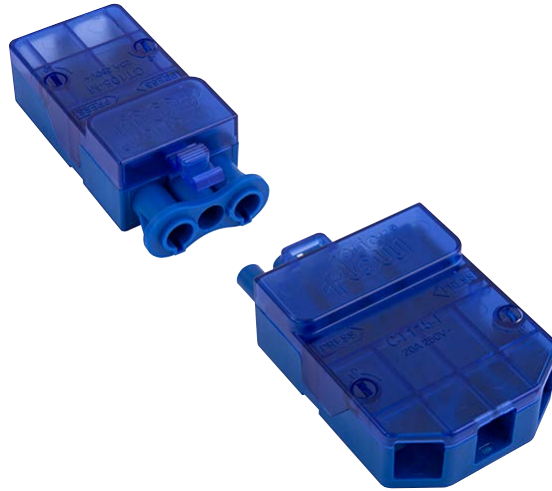


Product Code: CT115C

Luckinslive 406785987

Description: 250V~ 20A 3 Pole Complete Push Fit Connector With Loop



### General Information

CT115F Dimensions (mm)	79 (W) x 51 (D) x 23 (H)
CT105M Dimensions (mm)	79 (W) x 36 (D) x 24 (H)
Minimum Aperture Diameter (mm)	55
<b>Materials</b>	Cover: Polycarbonate Terminals: Silver Plated Brass
Operating Voltage (AC)	250
Resistive Load Rating (A)	20
Rated Impulse Voltage (kV)	4
Recommended Inner Core Strip Length (mm)	L & N: 30; E: 38
Recommended Conductor Strip Length (mm)	12
Termination Type	Push Fit
Terminal Capacity - Solid (mm <sup>2</sup> )	2.5 (Max.)
Terminal Capacity - Flex (mm <sup>2</sup> )	2.5 (Max.)
Termination Layout (Male)	(CT105M) N - E - L
Termination Layout (Female)	(CT115F) L - E - N - Loop
Cable Entry (Male Left Entry)	CT105M - 2 x 2.5mm <sup>2</sup> Max.
Cable Entry (Male Right Entry)	CT115M - 3 x 2.5mm <sup>2</sup> Max.
Cable Entry (Female)	CT115F - 3 x 2.5mm <sup>2</sup> Max.
Cable Restraint Supplied	Yes
Ingress Protection	IP20
Operational Temperature (°C)	-5 to +40
Warranty (Years)	20

Base & Terminal Housing: Nylon (PA66)  
Contact Spring: Stainless Steel  
Frequency (Hz) 50

**Standards** BS EN 61535

### Additional Information

For cleaning / polishing of products, use only a soft, dry, clean cloth. Ensure that the mains supply is isolated before commencing installation. Always refer to the circuit diagram supplied with the relevant product. Bare earth cables must always be covered with appropriate sleeving and wired to the earth terminal. Any dangerous compatibility between different manufactures installation coupler systems is not automatically prevented by compliance with IEC 61535.



Product Code: CT115C

Luckinslive 406785987

Description: 250V~ 20A 3 Pole Complete Push Fit Connector With Loop

## Wiring Example

MALE - CT105M

FEMALE - CT115F

