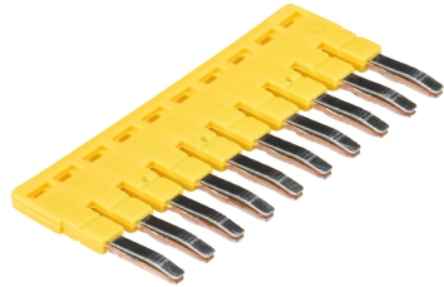


Data sheet

Commercial Art.No.: Z7.280.7027.0

Jumper bar IVBWK 2,5- 10

Cross connector, insulated for DIN rail terminal blocks type WKF..., 10 -pole



Commercial Art.No.	Z7.280.7027.0
EAN	4015573343382
Order Unit	20

Certificates / Approvals

ATEX

SEV-Ex

Technical data

General

Color	yellow
Modular spacing	5 mm
Number of bridged clamps	10
Mounting method	pluggable
Insulated	yes
Model	Cross connector

Accessories

Mounting method	pluggable
Insulated	yes
Color	yellow
Number of bridged clamps	10
Modular spacing	5 mm

Classification

ECLASS 11	
ECLASS 8.1	27141140
ETIM 7.0	EC000489
ETIM 6.0	EC000489
ETIM 5.0	EC000489
ETIM 4.0	EC000489
ETIM 3.0	EC000489

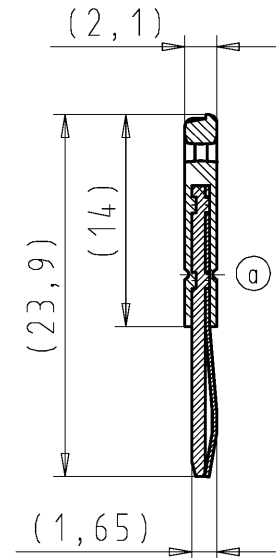
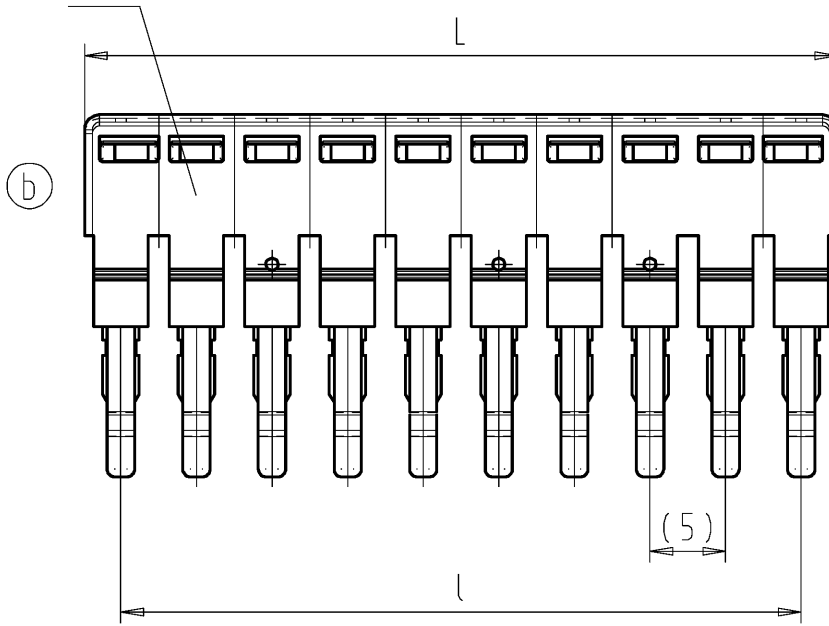
Product compliance

ROHS conformity status	Compliant
------------------------	-----------

REACH-SVHC conformity status	Compliant
------------------------------	-----------

10-polige Ausführung 10 poles variant

PA 66
UL 94 V-2



Weitergabe sowie Vervielfältigung dieses Dokuments, Verwertung und Mitteilung seines Inhalts sind verboten, soweit nicht ausdrücklich gestattet. Die Reproduktion, Distribution und Utilization of this document as well as the communication of its contents to others without express authorization is prohibited.

These dimensions will be especially checked at delivery
Only inspection dimensions
With /E marked dimensions are only valid for internal use

Diese Maße werden bei Abnahme besonders geprüft
Ausschließlich Prüfmaße
Mit /E gekennzeichnete Maße sind nur für interne Zwecke gültig

Teile-Nr. part nr.	Pol- zahl poles	L-0.2	l±0,05	Typ type
Z7.280.62MM.0	2			IVBWK 2.5 - 2
Z7.280.63MM.0	3	14.8	10	IVBWK 2.5 - 3
Z7.280.64MM.0	4	19.8	15	IVBWK 2.5 - 4
Z7.280.65MM.0	5	24.8	20	IVBWK 2.5 - 5
Z7.280.66MM.0	6	29.8	25	IVBWK 2.5 - 6
Z7.280.67MM.0	7	34.8	30	IVBWK 2.5 - 7
Z7.280.68MM.0	8	39.8	35	IVBWK 2.5 - 8
Z7.280.69MM.0	9	44.8	40	IVBWK 2.5 - 9
Z7.280.70MM.0	10	49.8	45	IVBWK 2.5 - 10
Z7.280.71MM.0	11	54.8	50	IVBWK 2.5 - 11
Z7.280.72MM.0	12	59.8	55	IVBWK 2.5 - 12
Z7.280.73MM.0	13	64.8	60	IVBWK 2.5 - 13
Z7.280.74MM.0	14	69.8	65	IVBWK 2.5 - 14
Z7.280.75MM.0	15	74.8	70	IVBWK 2.5 - 15
Z7.280.76MM.0	16	79.8	75	IVBWK 2.5 - 16
Z7.280.77MM.0	17	84.8	80	IVBWK 2.5 - 17
Z7.280.78MM.0	18	89.8	85	IVBWK 2.5 - 18
Z7.280.79MM.0	19	94.8	90	IVBWK 2.5 - 19
Z7.280.80MM.0	20	99.8	95	IVBWK 2.5 - 20

Weitere Daten siehe Katalog
further data see catalog

MM	
27	Katalogteil catalogue part
97	spezielle Verpackung special packing

Tolerierung Size ISO 14405 (E) / Tolerance system Size ISO 14405 (E).
{This ISO-standard describes the envelope principle. According to the envelope principle the deviations of form and parallelism are limited by the size tolerances}.

ja/yes Stoffverbots- und Deklarationsliste nach WN 5020.010 ist einzuhalten.
Conformity with Wieland document WN 5020.010 e (list of prohibited / declarable hazardous substances) to be declared!

Freitoleranz nach General tolerance CAD - Zeichnung, keine manuellen Änderungen CAD - drawing, no manual modifications allowed 1.Verwendung: First Use: Blatt: 1 von 1 Sheet: 1 of 1

/	/	Werkstoff/Material	2001	Tag/Date	Name	Zeichnung Nr./Drawing No.	Index
/	/		gezeichnet drawn	04.07.	TRESCHAN		
/	Maßstab/Scale	2:1	geprüft checked	-	-	Z7.280.6227.0 01K b	b
/	/		Normgepr. Stand. check	-	-		

Maße in mm/Dimensions are in mm

/	Vol.	mm ³	Of1./Surf.	mm ²	Ersatz für/Replacement for:
b	15.12.2015/	Type			Benennung/Title
a	26.07.2005/	Typ			VERBINDUNGSSTECKER insulated jumper bar
Index	Datum / Blatt Date / Sheet	IVB WK 2,5 - ..			
Änderung/Revision					

