

## FS1226-T BATTERY POWERED ENHANCED HEAT ALARM

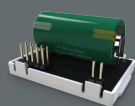
Sensor type	Thermistek
Battery type	10 year sealed for life Panasonic lithium



- **Smart RF Ready** - Fit a Smart RF Radio Module (FS1521W2) to wirelessly interlink up to 50 FireAngel Smart RF products, including FireAngel Connect Gateway.
- Connects directly to the **FireAngel Connect Gateway**, providing enhanced diagnostic capabilities and realtime notifications to mobile devices. (Requires FS1521W2 Smart RF Module)
- Thermistek technology as used by over 90% of the UK Fire and Rescue Services
- Enhanced thermal sensor predicts when the temperature will rise to a dangerous level
- Easily accessible central button - Test / Smart Silence / Locate
- Silence function - allows the alarm to be silenced in the event of a known false alarm
- Suitable to protect the most dangerous room within a home, a kitchen.
- Grade F1 as per BS 5839-6:2019

## Technical Specification

Product Dimensions	132mm (diameter) x 60mm (depth)
Supply voltage	3V DC
Battery	10 year sealed for life <b>Panasonic</b> lithium battery
Technology	Thermistek Enhanced Thermal Sensor and Smart RF Ready
Alarm sound level	85dB(A) at 3m (minimum)
Installation positions	Ceiling
For use in:	Kitchen, Garage, Loft
Alarms at temperature range	+54°C to +62°C
Operating temperature	+4°C to +38°C
Operating humidity	Up to 90% RH non-condensing
Storage temperature	-20°C to +60°C
Storage humidity	Up to 93% RH non-condensing
Plastic material	ABS, UL94 VO fire retardant
Warranty	5 years
Master pack quantity	10
Product Weight	143g
Certified to	BS 5446-2: 2003
Operating Frequency	868 MHz



### Create a Safety Network

Add a Smart RF Radio Module to wirelessly interlink up to 50 Smart RF devices with a simple 2 step process.



Smoke Alarm



CO Alarm



Wireless Alarm Control Unit



Assisted Living Solutions

For further information or sales enquiries, contact your local Specification Manager:  
[www.fireangel.co.uk/specification-manager](http://www.fireangel.co.uk/specification-manager)