



Trent

Trent 5ft Watt and CCT switchable non-corrosive linear luminaire

The Kosnic Trent non-corrosive LED battens are wattage and CCT (colour temperature) switchable with a unique lens to enhance light output and use high performance LEDs to offer outstanding lumen efficiency. The battens are suitable for a wide range of indoor and outdoor applications including warehouses, factories and garages. The product range is also available with a built-in emergency and/or sensor module.

KBTN27-48LS14/SCT (05765)

Specification

Voltage (eg 220-240 Vac 50/60Hz)	220-240Vac 50/60Hz
Current (mA)	213 (122, 151, 182)
Rated Power (W)	48 (27, 34, 41)
CCT Words	Cool White (Warm White, Day Light)
CCT (K)	4000 (3000, 6000)
Nominal Lifetime (h)	40000
L70B50 Lifetime (h)	54000
L80B10 Lifetime (h)	54000
L90 Lifetime (h)	51000
Total Luminous Flux (lm)	6240 (3240-27W/3000k, 3510-27W/4000k-6000k), 4080-34W/3000k, 4420-34W/4000k-6000k, 4920-41W/3000k, 5330-41W/4000k-6000k, 5760-48W/3000k, 6240-48W/6000k)
Power Factor	0.98 (0.96, 0.98, 0.98)
Blue Light Hazard	RG1
Glow wire temperature(°C)	650
Dimensions L x W x D (mm)	1570 x 97 x 82
Weight (kg)	2.15
In-rush current (peak/duration) (A)	13.5A/170 µs
Protection Rating	Class I
IK Rating	IK10
IP Rating	IP65
Ambient Temperature Range (°C)	-20 to 40
Emergency Luminous Flux (lm)	500
Depth (mm)	1540

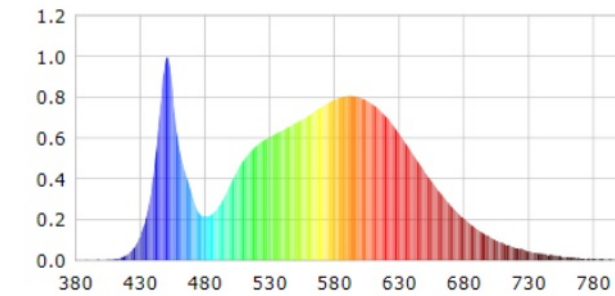
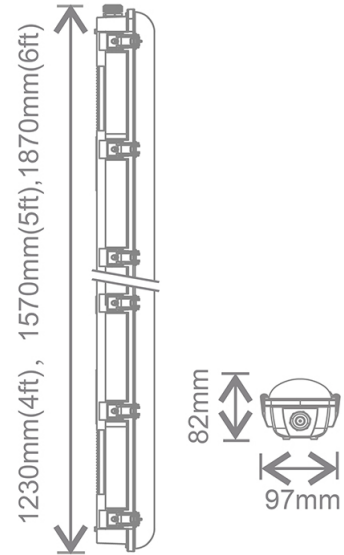
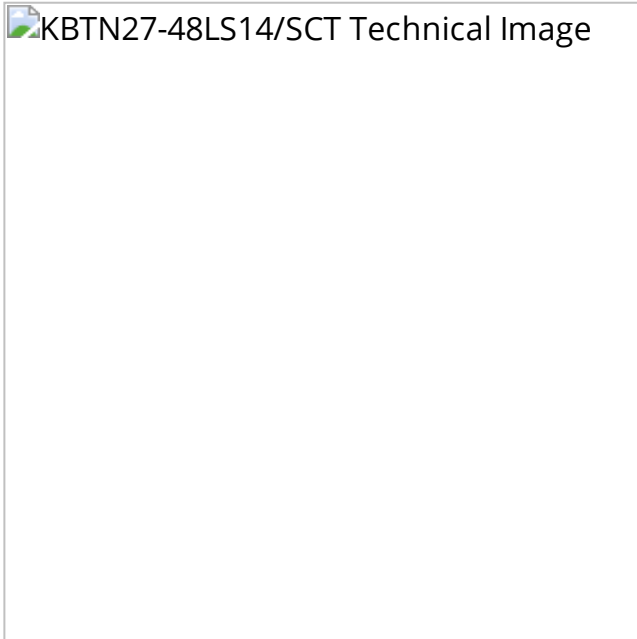
Light Source Specification

Lighting Technology Used	LED
Directional / Non Directional (DLS/NDLS)	NDLS
Light Source Cap Type (or other interface)	Connector

Mains / Non-Mains (MLS/NMLS)	NMLS
Connected Light source (Y/N)	N
Colour Tunable Light Source (Y/N)	N
High Luminance Light Source (Y/N)	N
Anti-Glare Shield (Y/N)	N
Dimmable (Y/N/Specific dimmer)	N
Energy Consumption in on-mode (kWh/1000H)	47
Energy Efficiency Class (NEW FORMULA)	D
Useful Luminous Flux (lm)	6930
Beam Angle correspondence (in 360°/120°/90°)	in 360°
CCT	4000
On-Mode Power (Pon) (W)	47
Standby Power (Psb) (W)	0
Networked Standby Power (Pnet) (W)	N/A
CRI	82
CRI (min)	80
CRI (max)	84
Height (mm)	8
Width (mm)	70
Depth (mm)	1540
Claim of Equivalent Power? (Y/N)	N
Equivalent Power (W)	N/A
Chromaticity Co-Ordinates (X)	0.378
Chromaticity Co-Ordinates (Y)	0.379
Peak Luminous Intensity (DLS) (cd)	N/A
Beam Angle (DLS)	N/A
Beam Angle (min)(DLS)	N/A
Beam Angle (max) (DLS)	N/A
R9 CRI (LED/OLED)	9
Survival Factor (x.xx)	0.9

Lumen Maintenance Factor (x.xx)	0.96
Displacement Factor	N/A
Colour Consistency in Mcadam Ellipses (Mains LED/OLED)	N/A
LED light source replaces fluorescent without integrated ballast of particular wattage (Mains LED/OLED) (Y/N)	N/A
Replacement W Claim (Mains LED/OLED) (W)	N/A
Flicker metric (pst LM) (x,x)	N/A
Stroboscopic effect metric (SVM) (x,x)	N/A
Light Source Supply	132Vdc 350mA

Technical Drawings



4000K