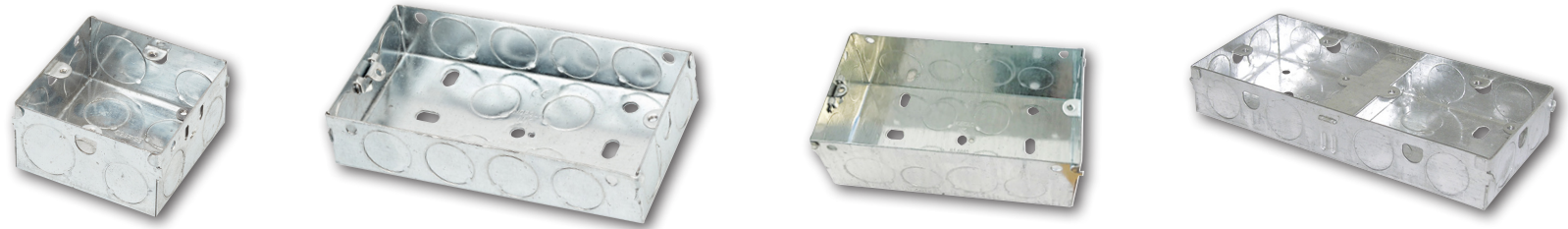


Switch & Socket Boxes

- Conforms to BS 4662

NORSLO

- + Suitable for use with flush mounted accessories
- + Manufactured from pre galvanised sheet steel
- + Integral Brass earth point
- + Chemical resistant
- + Floating lug for ease of installation (not DB, DB25 & ARCH)



	116	125	135	147	225	235	247	DB	DB25
Description	Switch & Socket Box 1 Gang - 16mm	Switch & Socket Box 1 Gang - 25mm	Switch & Socket Box 1 Gang - 35mm	Switch & Socket Box 1 Gang - 47mm	Switch & Socket Box 2 Gang - 25mm	Switch & Socket Box 2 Gang - 35mm	Shaver Box 2 Gang - 47mm	Dual Box 2 Gang - 35mm	Dual Box 2 Gang - 25mm
Pack Qty	20	10	10	10	5	5	5	5	5
Barcode	5012739 611780	5012739 611964	5012739 612305	5012739 612381	5012739 613104	5012739 613128	5012739 613173	5012739 617799	5012739 617805
K/O Dimensions (mm)	L25 x W8	Ø 20mm	Ø 20mm + Ø 25mm	Ø 20mm + Ø 25mm	Ø 20mm	Ø 20mm + Ø 25mm	Ø 20mm + Ø 25mm	Ø 20mm + Ø 25mm	Ø 20mm
K/O Qty	4	12	9 + 3	6 + 6	16	13 + 3	10 + 6	8 + 8	16
Material	Pre-Galvanised Steel								
Product Weight	73.5g	100.2g	120.4g	147g	156.6g	184.4g	221g	220.6g	198.4g
Guarantee	1 Year								
Conforms To	BS 4622								

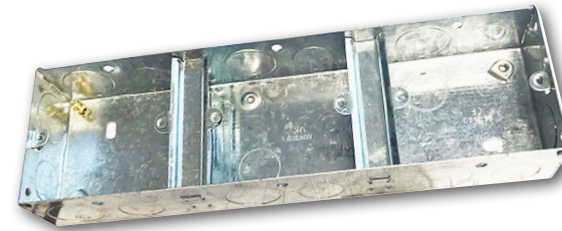
Switch & Socket Boxes

- Conforms to BS 4662

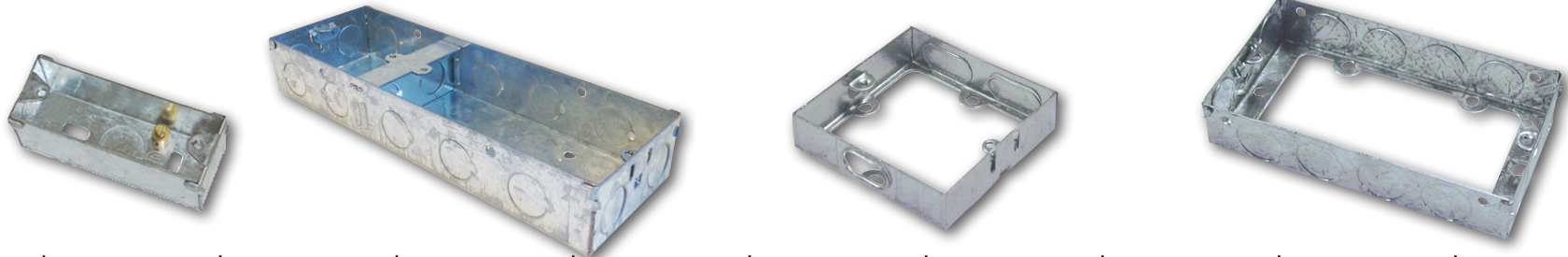
**GREEN
BROOK**
ELECTRICAL

NORSLO

- + Suitable for use with flush mounted accessories
- + Manufactured from pre galvanised sheet steel
- + Integral Brass earth point
- + Chemical resistant
- + Floating lug for ease of installation (not DB, DB25 & ARCH)



**New
DB35111**



	ARCH	DB3512	DB35111	116EB	125EB	135EB	216EB	225EB	235EB
Description	Dual Box 1 Gang - 25mm	Dual Switch & Socket Box 1 & 2 Gang - 35mm	Dual Switch & Socket Box 1 & 3 Gang - 35mm	Extension Box 1 Gang - 16mm	Extension Box 1 Gang - 25mm	Extension Box 1 Gang - 35mm	Extension Box 2 Gang - 16mm	Extension Box 2 Gang - 25mm	Extension Box 2 Gang - 35mm
Pack Qty	20	5	5	20	10	10	10	5	5
Barcode	5012739 616426	5012739 640889	5012739 648373	5012739 611797	5012739 611964	5012739 612312	5012739 613098	5012739 613111	5012739 613135
K/O Dimensions (mm)	Ø 16mm	Ø 20mm + Ø 25mm	Ø 20mm + Ø 25mm	L25 x W10	Ø 20mm	Ø 20mm	L25 x W10	Ø 20mm	Ø 20mm + Ø 25mm
K/O Qty	3	16 + 2	11 + 8	2	8	8	6	12	9 + 3
Material	Pre-Galvanised Steel								
Product Weight	54.35g	275g	320g	44.15g	70.3g	90.4g	68g	106g	133.6g
Guarantee	1 Year								
Conforms To	BS 4622								

TECHNICAL DATA SHEET

**GREEN
BROOK**
ELECTRICAL

Tel: 01279 772 772
Fax: 01279 422 007
Email: sales@greenbrook.co.uk
www.greenbrook.co.uk



Rev3-08.02.21