

Conduit Pipe Bender

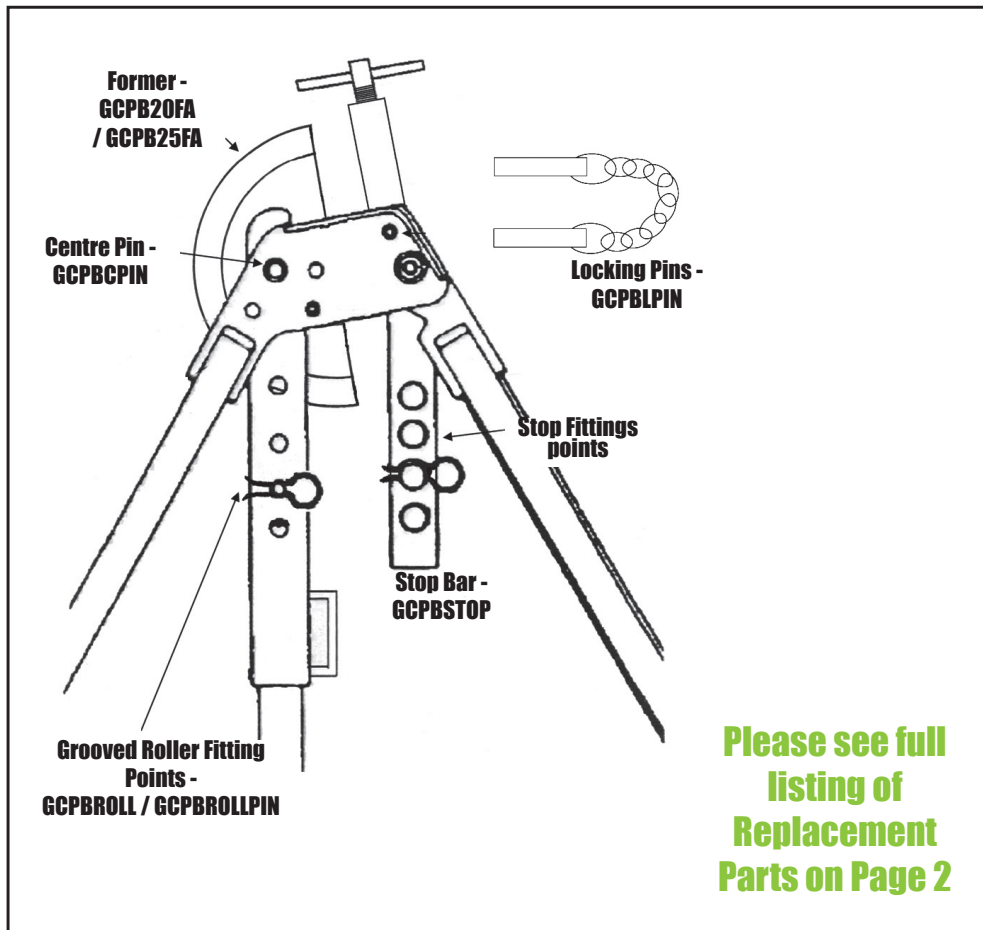
- for 20mm & 25mm Steel Conduit

NORSLO

- + Supplied with pipe vice
- + Full range of spare parts - see overleaf
- + Conforms to BS



GCPBN



Please see full listing of Replacement Parts on Page 2

	GCPBN
Description	Conduit Pipe Bender
Pack Qty	1
Barcode	5012739641350
Product Weight (nett)	22kg
Dimensions	L 1360 x W 500 X D 1000mm
Material	Steel
Guarantee	1 Year

Conduit Pipe Bender

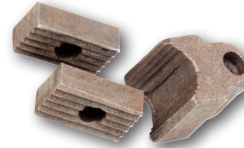
- Replacement Parts Listing

NORSLO

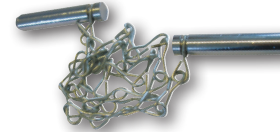
+ 1 year guarantee



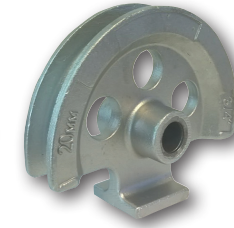
GCPBVICE



GCPBVICEJAW



GCPBLPIN

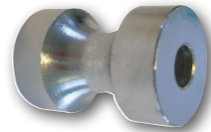


GCPB20FA



GCPB25FA

	GCPBVICE	GCPBVICEJAW	GCPBLPIN	GCPB20FA	GCPB25FA
Description	Conduit Pipe Bender Vice	Vice Jaw	Lock Pin	Former 20mm	Former 25mm
Pack Qty	1	1	1	1	1
Barcode	5012739626388	5012739645303	5012739626425	5012739639791	5012739639807
Product Weight (nett)	1.665kg	0.088kg	0.125kg	0.59kg	1.08kg
Dimensions	L140 x H190mm	L30 x H25mm	L355 x H187mm	L160 x H130mm	L230 x H160mm
Material	Steel	Steel	Steel	Aluminium	Aluminium



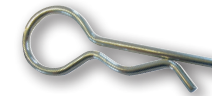
GCPBROLL



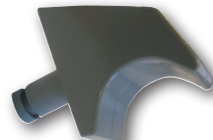
GCPBROLLPIN



GCPBCPIN



GCPBSPRING



GCPBSTOP

	GCPBROLL	GCPBROLLPIN	GCPBCPIN	GCPBSPRING	GCPBSTOP
Description	Grooved Roller	Grooved Roller Pin	Centre Pin	Spring Pin Clip	Stop Fitting
Pack Qty	1	1	1	1	1
Barcode	5012739626395	5012739645310	5012739626418	5012739626432	5012739626401
Product Weight (nett)	0.295kg	0.086kg	0.334kg	0.006kg	0.215kg
Dimensions	L570 x H380mm	L95 x H125mm	L155 x H187mm	L65 x H25mm	L60 x H80mm
Material	Steel	Steel	Steel	Steel	Steel

TECHNICAL DATA SHEET