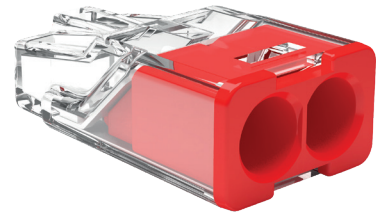
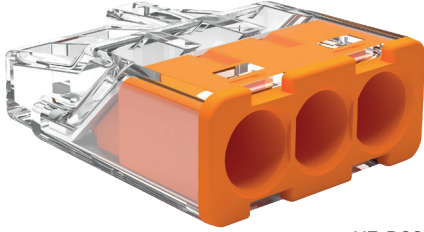




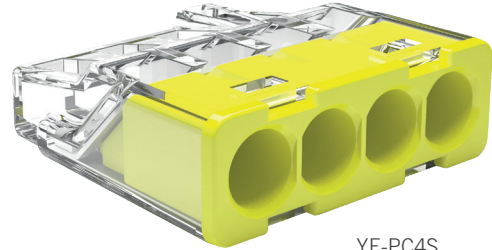
# Push in Connectors



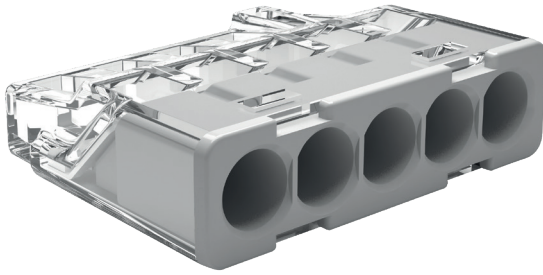
YE-PC2S



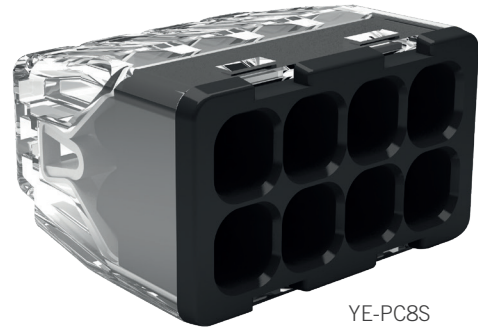
YE-PC3S



YE-PC4S



YE-PC5S



YE-PC8S

- Inclined plane design on sides makes easy to handle while installing
- Compact size design is perfect for tight spaces
- Colour coded clear shell offers visual verification of connection
- Isolated shell between pole design prevents the wires from splitting into other poles
- Single spring design makes no interference for installation
- Perfect in insertion force saves installation time
- Material: Polycarbonate (PC)  
Flame-retardant to UL94V-0,  
Thermoplastic Flame-retardant to UL94V-2
- Wire Range: 0.2-2.5mm<sup>2</sup>, Solid and Rigid Stranded (7cores)
- Wire Types: Solid and Rigid Stranded (7cores)
- Working Temperature: T85
- Voltage / Current Rating: 450V/24A

Part No.	No. Poles	Colour	Box QTY
YE-PC2S	2	Red	100
YE-PC3S	3	Orange	100
YE-PC4S	4	Yellow	100
YE-PC5S	5	Grey	100
YE-PC8S	8	Black	50