



For full User Instructions
for Republic of Ireland Customers
scan the QR code below



+353 (0)61 471277



sales@eielectronics.ie



Ei Electronics. Shannon, Co.Clare, Ireland



www.eielectronics.ie

Ei600 Series



www.aico.co.uk



Aico Ltd, Oswestry, Shropshire SY10 8NR, UK



enquiries@aico.co.uk



+44 (0)1691 664100



For full User Instructions
for UK Customers
scan the QR code below



Ei600 Series

Introduction

This Alarm is intended to be used as a device that provides a loud warning when it detects smoke to alert people of an immediate danger enabling them to evacuate their dwelling promptly.

It must be installed in accordance with the latest standards and is for indoor use only.

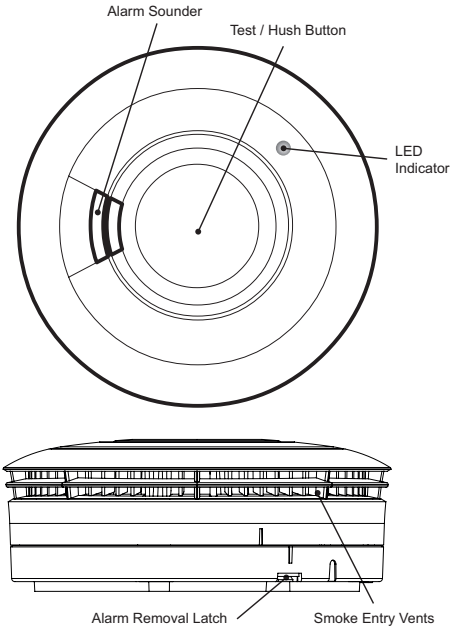
This battery powered device is suitable for use in residential applications. Depending on the model, It can be interconnected by hardwire or RF.

This Alarm can only be used according to the instructions as described in the user manual. All use other than that described in the user manual is seen as unintended use.

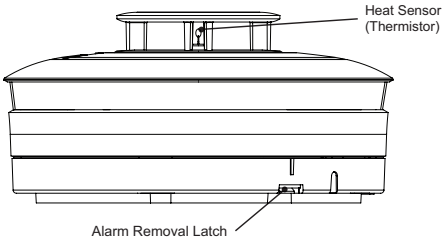
Please read the user manual in full before installing or using the Alarm.

Product Overview

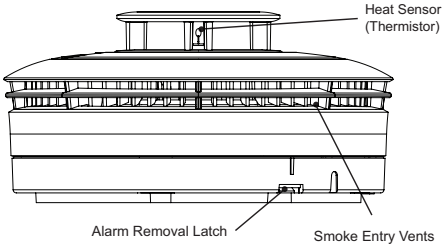
Ei650 / 650i Smoke Alarm



Ei630i Heat Alarm



Ei660i Multi-Sensor Alarm



Technical Specification

Power Supply	3V Lithium Battery (non replaceable)
Alarm Sounder	Piezoelectric Horn
Alarm Sound Level	85dB(A) at 3 meters (except in Test mode)
Test/Hush Button	<p><u>All models</u> Checks sensors, electronics, interconnection, battery and horn. If unit is in alarm when pressed, it silences the alarm for 10 min.</p> <p><u>For "i" models only</u> Pressing the Test/Hush button will also silence fault beeps for 12hrs.</p>
Visual indicators	<p><u>For Standard models only</u> Red LED – power up, alarm, hush mode, fault</p> <p><u>For "i" models only</u> Red LED – power up, alarm, hush mode, memory Yellow LED - power up and fault</p>
Operational Life	10 years
Interconnection	For units that can be interconnected wirelessly a RadioLINK module Ei600MRF will need to be added to each unit
Fixings	Supplied with mounting plate, screws and wall plugs
Operating & Storage Temperature	-10°C to +40°C*
Humidity Range	15% to 95% RH (non-condensing)

* Temperature and Humidity conditions are for normal operation and storage. The Alarms will function outside these ranges as required by the specific product standards. Extended exposure to conditions outside these ranges can reduce product life. For advice on prolonged operation outside these range consult the manufacturer.

Important Safety Instructions

The Alarm is designed to be permanently mounted. The mounting plate can be screwed directly to the ceiling or wall.

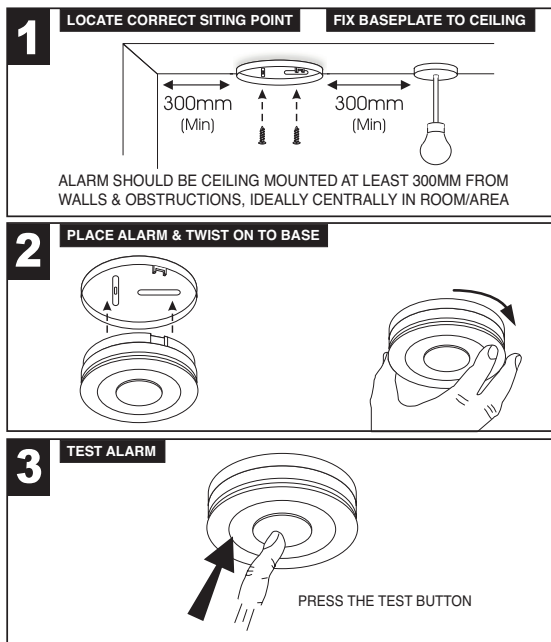
The battery for this Alarm is in a sealed compartment. Do not attempt to open the Alarm to get access to the battery as it is not replaceable.

WARNINGS:

- 1) Do not install Alarms in new or renovated buildings until all work is completed.
- 2) Do not test with flame. This can set fire to the Alarm and damage the house.
- 3) Do not paint or cover in any way your Alarm as this will affect its sensitivity.
- 4) Do not attempt to remove, recharge or burn the battery, as it may explode.
- 5) Do not expose battery to excessive heat such as sunshine, fire, etc...
- 6) Do not interfere or tamper with the Alarm as it may result in malfunction.
- 7) Do not dispose of your Alarm in a fire.

Mounting and Wiring

WARNING: to prevent injury, this device must be securely attached to the wall or ceiling in accordance with the installation instructions.



An Alarm is a life saving device and as such it should be tested regularly

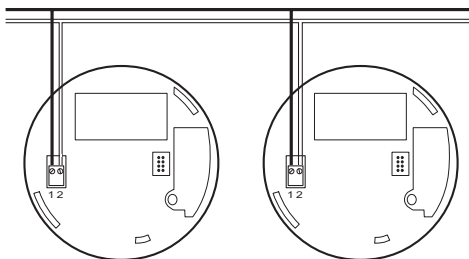
Interconnecting Alarms (Model dependent)

With interconnected Alarms, when one Alarm detects fire all will sound. However, only Alarms detecting fire will have a flashing red LED.

Heat Alarms must always be interconnected to Smoke or Multi-Sensor Fire Alarms to ensure early warning.

WARNING: Do not hardwire interconnect battery powered Alarms with low voltage or mains Ei Electronics Alarms/devices or any other type of Alarm produced by another manufacturer. Doing so may damage the Alarms and could result in a shock or fire hazard.

To interconnect Alarms, wire all the terminals marked 1 together and all the terminals marked 2 together.

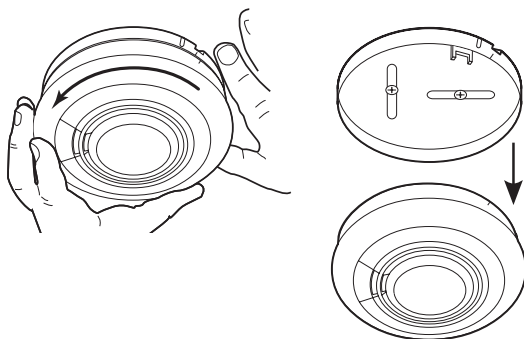


A maximum of 250 meters of two core, 0.5mm² to 0.75m², stranded signal cable can be used (maximum resistance between detectors 50 ohm).

Alarm should be interconnected only within the confines of a single family unit.

The Alarms can also be RF interconnected to other RF Alarms and devices by installing an Ei600MRF RadioLINK Module.


Removing Alarms







Disposal of Alarms

To dispose of the Alarm, remove it from its mounting plate to switch it off by twisting it in an anti-clockwise direction.

The Alarm must be recycled in accordance with the directive 2012/19/EU on waste electrical et electronic equipment (WEEE).

<p>The crossed out wheelie bin symbol that is on your product indicates that this product should not be disposed of via the normal household waste stream. Proper disposal will prevent possible harm to the environment or to human health. When disposing of this product please separate it from other waste streams to ensure that it can be recycled in an environmentally sound manner. For more details on collection and proper disposal, please contact your local government office or the retailer where you purchased this product.</p>	
---	---

 2797	 0086																
Ei Electronics, Shannon, Co. Clare, Ireland 22 DoP No.22-0001	Ei Electronics, Shannon, Co. Clare, Ireland 22 DoP No. 22-0001																
EN14604:2005 + AC:2008 Smoke Alarm Devices: Ei650, Ei650C, Ei650W, Ei650RF, Ei650i, Ei650iC, Ei650iW, Ei650iRF, Ei660i, Ei660iRF Fire Safety <table style="width: 100%; border: none;"> <tr> <td style="width: 45%;">Nominal activation conditions/ sensitivity, response delay (response time) and performance under fire condition</td> <td style="width: 5%; text-align: center;">Pass</td> <td style="width: 45%;">Vibration resistance</td> <td style="width: 5%; text-align: center;">Pass</td> </tr> <tr> <td>Operational reliability</td> <td style="text-align: center;">Pass</td> <td>Humidity resistance</td> <td style="text-align: center;">Pass</td> </tr> <tr> <td>Tolerance to voltage supply</td> <td style="text-align: center;">Pass</td> <td>Corrosion resistance</td> <td style="text-align: center;">Pass</td> </tr> <tr> <td>Response delay and temperature resistance</td> <td style="text-align: center;">Pass</td> <td>Electrical stability</td> <td style="text-align: center;">Pass</td> </tr> </table>		Nominal activation conditions/ sensitivity, response delay (response time) and performance under fire condition	Pass	Vibration resistance	Pass	Operational reliability	Pass	Humidity resistance	Pass	Tolerance to voltage supply	Pass	Corrosion resistance	Pass	Response delay and temperature resistance	Pass	Electrical stability	Pass
Nominal activation conditions/ sensitivity, response delay (response time) and performance under fire condition	Pass	Vibration resistance	Pass														
Operational reliability	Pass	Humidity resistance	Pass														
Tolerance to voltage supply	Pass	Corrosion resistance	Pass														
Response delay and temperature resistance	Pass	Electrical stability	Pass														

	
Heat Alarm Devices: Ei630i, Ei630iRF, Ei660i, Ei660iRF	Heat Alarm Devices: Ei630i, Ei630iRF, Ei660i, Ei660iRF

The Declaration of Performance may be consulted at www.eielectronics.com/compliance

Contact Us

Aico Ltd. Mile End Business Park,
 Maesbury Rd, Oswestry, Shropshire SY10 8NR, U.K.
 Tel: 01691 664100

www.aico.co.uk

Ei Electronics. Shannon V14 H020, Co Clare, Ireland.
 Tel:+353 (0)61 471277

www.eielectronics.ie