

LED Round Slim Bulkhead

Installation Instructions



Please read these instructions carefully before installation
Leave a copy for the user/maintenance engineer for future reference



Important Safety Information

- It is recommended that this fitting is installed, inspected and maintained by a qualified Electrician.
- Installation should be carried out in accordance with the latest edition of the IET Wiring Regulations (BS 7671) and the latest Building Regulations. If in doubt, consult a qualified electrician.
- This product is designed for connection to a 220-240V~50/60Hz mains supply.
- Before commencing any installation or maintenance work, ensure that the electrical mains supply is isolated and circuit fuses are removed or switched off.
- Ensure that all electrical connections are tight with no loose strands including factory made connections.
- This luminaire is suitable for indoor and outdoor use.
- Please note the IP rating of this luminaire when deciding the location for installation. It is the installer's responsibility to ensure that the cable entry point and any grommets are correctly fitted and fully sealed to maintain the IP65 rating.
- This product is non-dimmable.
- This luminaire is suitable for use in ambient area temperatures of -10°C to +40°C (Standard Luminaire) 0°C to +40°C (Emergency Luminaire).
- The luminaire body and diffuser are made from Polycarbonate material. Always ensure that the product is suitable for the intended installation area.
- MCBs may require to be updated to allow for increased inrush current.
- This product contains sensitive electronic components which can be damaged by power surges or transient overvoltage. The 18th Edition Wiring Regulations stipulate that surge protection devices (SPDs) must be provided within the consumer unit where deemed necessary.
- Do not carry out insulation resistance tests with the luminaire connected to the circuit.
- The LED Light Source and Control Gear contained in this luminaire shall only be replaced by the manufacturer or his service agent or similar qualified professional person.
- This product contains a light source of energy efficiency class C.

Round Slim Bulkhead Range

Fig. 1 Selectable Power Switch Settings

ON	PIN 1	PIN 2	POWER
<input type="checkbox"/>	OFF	OFF	10W
<input type="checkbox"/>	ON	OFF	12W
<input type="checkbox"/>	OFF	ON	14W
<input type="checkbox"/>	ON	ON	16W

Fig. 2 Selectable Colour Temperature Settings

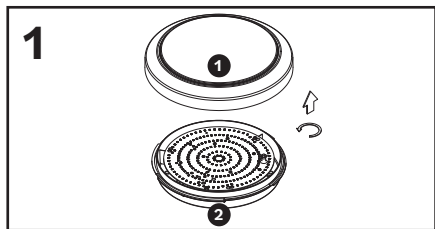
ON	PIN 1	PIN 2	CCT
<input type="checkbox"/>	ON	OFF	3000K
<input type="checkbox"/>	ON	ON	4000K
<input type="checkbox"/>	OFF	ON	6500K

Technical Specifications

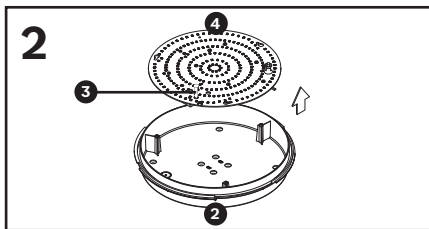
Part No.	Description	Microwave Sensor	Emergency EM3	Switchable Power Output	Class Rating	Measurement (AxBmm)	Lumen Output (lm)	IP Rating	CRI Ra	Switchable Colour Temperature
LXBHRS/4PS/CCT3	LED Round Slim Bulkhead	No	No	10/12/14/16W	Class I	327 x 77	1000/1200/1400/1600	IP65	> 80	3000K-4000K-6500K
LXBHRS/4PS/CCT3/MWS	LED Round Slim Bulkhead	Yes	No	10/12/14/16W	Class II	327 x 77	1000/1200/1400/1600	IP65	> 80	3000K-4000K-6500K
LXBHRS/4PS/CCT3/EM3	LED Round Slim Bulkhead	No	Yes	10/12/14/16W	Class I	327 x 77	1000/1200/1400/1600	IP65	> 80	3000K-4000K-6500K
LXBHRS/4PS/CCT3/MWS/EM3	LED Round Slim Bulkhead	Yes	Yes	10/12/14/16W	Class II	327 x 77	1000/1200/1400/1600	IP65	> 80	3000K-4000K-6500K

Important Installation Information

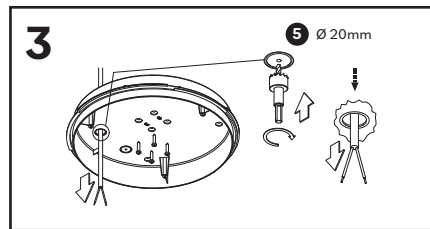
Select a suitable mounting position and use the correct fixings for the type of surface. Ensure that there is adequate free air ventilation around the luminaire at all times. Do not install this product onto damp or newly plastered walls or ceilings. Isolate the mains power supply before commencing installation.



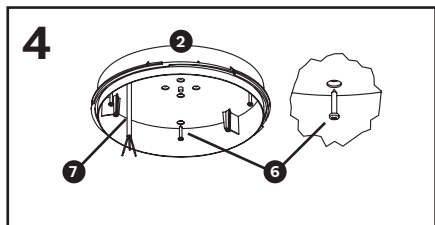
Remove the front diffuser/decorative trim 1 from the base 2 by rotating 45 degrees anti-clockwise and pulling away from the base tray.



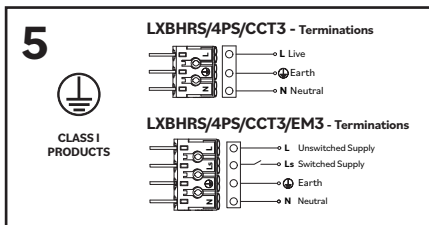
Loosen but do not remove the gear tray retaining screws 3. Adjust the position of the gear tray to align the hole in the keyhole slots with the retaining screws. Remove the gear tray 4 from the base 2.



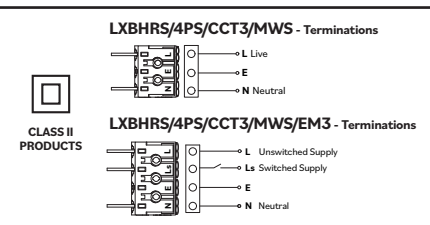
Select a suitable cable entry point and drill out a hole in the base. 5 Ensure that the grommet provided and any additional sealants are used to maintain the IP65 rating.



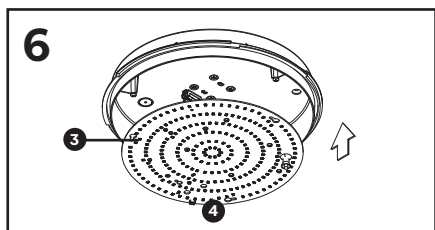
Position and fix the base 2 to a suitable solid surface using the screws provided 6. Feed the supply cable 7 into the luminaire through a previously selected cable entry point.



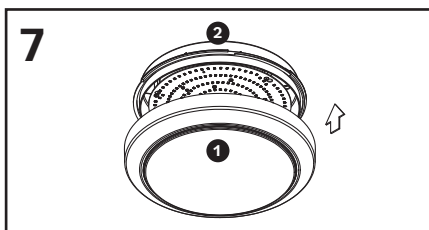
Terminate the supply cable into the terminal block mounted on the underside of the gear tray ensuring that the correct polarity is observed. All conductors must be fully sleeved and insulated.



For Emergency luminaires - Ensure that the luminaire has a continuous live supply to L (Unswitched live). The "Maintained" emergency luminaire can be "switched" via connection Ls (Switched Supply). Ensure battery cells cable is connected.



Dress any cables away from the edges of the luminaire and re-align the gear tray 4. Refit the gear tray using the retaining screws 3.



Re-fit the front diffuser/decorative trim 1 to the base 2. Restore the mains power supply, switch on and test for satisfactory operation.

4PS 4x Power Outputs can be selected by changing the switch settings as shown in Fig. 1 10W, 12W, 14W & 16W. The switches are located on the base of the LED Driver Module.

CCT3 3x LED Colour Temperatures can be selected by changing the switch settings as shown in Fig. 2 3000K, 4000K & 6500K. The switches are located on the front of the LED Gear Tray.

Microwave Sensor Settings

Detection range - Up to 8m when wall mounted at 2m height. 5m in any direction when ceiling mounted at 2.5-5m height when set to 100% sensitivity.

For luminaires with a microwave sensor option, adjust the sensor to the desired settings using the DIP switches as follows:

Sensitivity: Sensitivity can be adjusted by selecting the combination on the DIP switches for different applications.

- i) Range up to 100%
- ii) Range up to 75%
- iii) Range up to 50%
- iv) Range up to 10%

	1	2	
i)	●	●	100%
ii)	●	○	75%
iii)	○	●	50%
iv)	○	○	10%

Hold Time: Hold-time refers to the time period that the light remains 100% on if no movement is detected.

- i) 5 seconds
- ii) 90 seconds
- iii) 5 minutes
- iv) 15 minutes

	3	4	
i)	●	●	5s
ii)	●	○	90s
iii)	○	●	5min
iv)	○	○	15min

Daylight Sensor: The sensor can be set to only allow the lamp to illuminate below a defined ambient brightness threshold. The light will always turn on when movement is detected if the daylight sensor is disabled.

- i) Disable
- ii) 50 lux darkness operation only
- iii) 10 lux twilight operation only
- iv) 2 lux twilight operation only

	5	6	
i)	●	●	Disable
ii)	●	○	50Lux
iii)	○	●	10Lux
iv)	○	○	2Lux

Emergency Luminaire Connection and Testing

- The Emergency luminaire requires an unswitched live supply L in addition to the switched live supply Ls.
- Ensure that the battery cells supply cable is connected to the Emergency module before mains power is restored.
- Once installed, the batteries must be charged for a minimum of 24 hours before carrying out a full discharge and commissioning test to check that they are charging correctly and that the maintained 3-hour discharge duration is being achieved. The date should be noted on the battery.
- The Green LED Indicates that the batteries are charging.
- Emergency luminaires should be routinely inspected and tested in accordance with current BS 5266 guidelines. Refer to BS 5266 & BS EN 50172 for full Emergency Lighting requirements and testing procedures.
- A log report must be completed and kept for the periodic test procedure. A copy of the Emergency test record sheet is included with this product. Further copies can be requested at sales@luxna.co.uk
- A completed copy of the Emergency test record sheet must accompany any product returned to the manufacturer.

Batteries: The battery inside an emergency product is a consumable replaceable item. The battery has a normal operating designed service life of 4 years and must be replaced in a timely manner to ensure that the integrity of the emergency lighting system is maintained. The batteries actual service life can be shortened by several variable factors including (but not limited to): Type of installation environment, Room temperature, Number of charge/discharge cycles, power supply interruptions etc. The product should be tested and maintained regularly according to the details within the instruction manual. Should the battery fail to provide the minimum rated discharge duration of 3 hours at any time during the products service life, it must be replaced.

Emergency luminaires must not be installed in areas where the ambient area temperature is above or below the recommended operating temperature range 0°C to +40°C

See Website for further warranty terms and conditions and details regarding the product warranty registration procedure.

Warranty: The 5 year standard product warranty against any defects in materials or workmanship commences from the original date of purchase. Should this product fail during the warranty period it will be repaired or replaced with the same or equivalent product free of charge, subject to providing the original receipt/invoice or proof of the original date of purchase and return of the faulty unit. In our sole discretion, we are unable to repair or replace a defective product, we will refund the purchase price of the product. The warranty is invalid if in our judgment the product fails due to incorrect installation not conforming to our product instructions or installation within an improper working environment. The warranty will not apply if the product fails due to damage in storage, shipment, accident or misuse. Modification to the product in any way or removal of the batch number will void the warranty. Luxna Lighting does not accept responsibility for any installation, labour or travel costs which may be associated with the replacement or return of any faulty products. Our maximum liability under the terms of this warranty is limited to the purchase price of the product. Your statutory rights are not affected. Luxna Lighting reserves the right to alter product specifications without prior notification. Terms and conditions are also subject to change without prior notice.