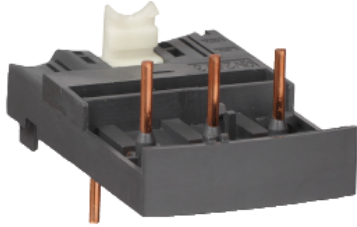


# Product datasheet

Specifications



## TeSys GV2 - Combination blocks - with contactor LC1D09...D38

Local distributor code: 389530068 GV2AF3

EAN Code : 3389110569063

### Main

Range	Linergy
Product name	FT
Device short name	GV2AF
Product or component type	Combination block
Accessory / separate part category	Connection accessory
Range compatibility	TeSys GV2 TeSys Deca

### Complementary

Product compatibility	LC1D09...D38
Poles description	3P
[Ie] rated operational current	32 A
Quantity per set	Set of 10
Net weight	0.016 kg

### Packing Units

Unit Type of Package 1	PCE
Number of Units in Package 1	1
Package 1 Height	9.500 cm
Package 1 Width	10.000 cm
Package 1 Length	15.000 cm
Package 1 Weight	22.000 g
Unit Type of Package 2	BB1
Number of Units in Package 2	10
Package 2 Height	9.500 cm
Package 2 Width	10.000 cm
Package 2 Length	15.000 cm
Package 2 Weight	268.000 g
Unit Type of Package 3	S03

<b>Number of Units in Package 3</b>	140
<b>Package 3 Height</b>	30.000 cm
<b>Package 3 Width</b>	30.000 cm
<b>Package 3 Length</b>	40.000 cm
<b>Package 3 Weight</b>	4.196 kg

## Offer Sustainability

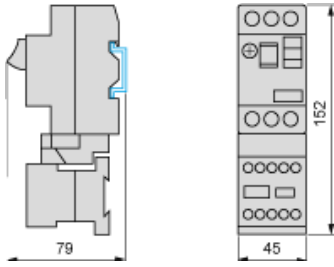
<b>Sustainable offer status</b>	Green Premium product
<b>REACH Regulation</b>	<a href="#">REACH Declaration</a>
<b>REACH free of SVHC</b>	Yes
<b>EU RoHS Directive</b>	Compliant <a href="#">EU RoHS Declaration</a>
<b>Toxic heavy metal free</b>	Yes
<b>Mercury free</b>	Yes
<b>China RoHS Regulation</b>	<a href="#">China RoHS declaration</a>
<b>RoHS exemption information</b>	<a href="#">Yes</a>
<b>Environmental Disclosure</b>	<a href="#">Product Environmental Profile</a>
<b>Circularity Profile</b>	<a href="#">End of Life Information</a>
<b>WEEE</b>	The product must be disposed on European Union markets following specific waste collection and never end up in rubbish bins

## Contractual warranty

<b>Warranty</b>	18 months
-----------------	-----------

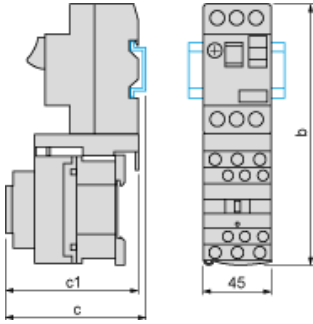
**GV2AF01**

Combination GV2ME + TeSys k contactor



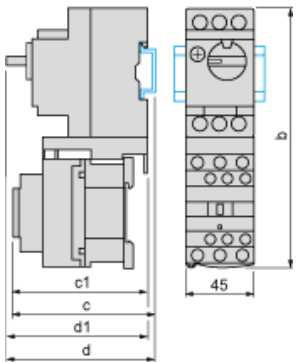
**GV2AF3**

Combination GV2ME + TeSys d contactor



GV2ME +	LC1D09...D18	LC1D25 and D32
b	176.4	186.8
c1	94.1	100.4
c	99.6	105.9

Combination GV2P + TeSys d contactor



GV2P +	LC1D09...D18	LC1D25 and D32
b	176.4	186.8
c1	100.1	106.4
c	105.6	111.9
d1	95	95
d	100.5	100.5

**Recommended replacement(s)**