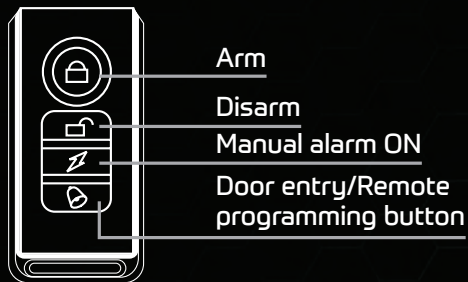


THE REMOTE CONTROL FUNCTION

Remote Control



USAGE AND SETTINGS

Arm & Disarm Mode Setting

Press button on remote once, the alarm will sound 'beep, beep' then 'beep' after 5 seconds when it is in ARM alert state.

When contact or displacement is detected the alarm will sound a warning for 2 seconds. If the alarm is triggered again within 2-12 seconds, it will alarm for 30 seconds automatically.

To stop the alarm or exit ARM mode, press button on remote once.

⚡ This button activates the alarm manually.

SENSITIVITY ADJUSTMENT

VANGUARDIAN Alarms have 7 levels of sensitivity adjustment. If you are unfortunate to experience a 'false alarm' simply follow the instructions below...

The 7 levels range from "Do...Re...Mi...Fa...So...La...Te"

These 7 levels of audible pitch represent the 7 LEVELS OF SENSITIVITY ADJUSTMENT at your disposal for you to experiment with.

SENSITIVITY ADJUSTMENT

To adjust sensitivity, PRESS AND HOLD the DISARM button whereby the alarm will sound a "beep, beep". The LED indicator "on the remote" will switch OFF temporarily and back ON.

NOW, press the ARM button ONCE...you will hear "Do" ...Press again and you will hear "Re" These changes in pitch represent the levels of sensitivity.

Simply adjust 1 or 2 levels down at a first to find a balance you are happy with. Once you are happy, press the DISARM button and the new level is set.

ATTACH THE STICKER PROVIDED ONTO THE INSIDE OF YOUR BACK DOOR TO REMIND YOU OF HOW TO ADJUST YOUR VANGUARDIAN SENSITIVITY.

REPLACING BATTERIES

Alarm: batteries will need replacing if "performance is notably reduced or if you hear "Du...Du" when armed.

Remote: batteries will need replacing when the LED darkens or if you notice the wireless range is shorter.

Carefully remove the sealed electronics compartment that contains the batteries.

(Take care to ease the unit away from the seal around the outlet). Once out, remove the small screw with the screwdriver provided and use a slotted screwdriver to separate the two halves of the alarm cartridge, as shown below.



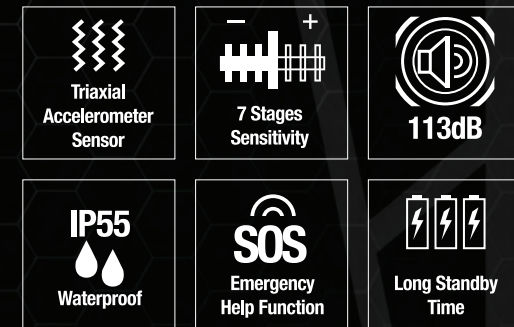
The AAA batteries will be now be visible, Simply replace them with a quality AAA battery. The alarm will "beep", now simply re-assemble.



VAN GUARDIAN

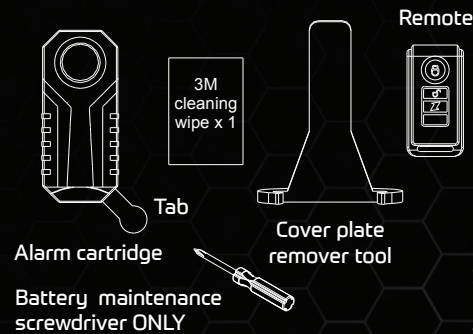
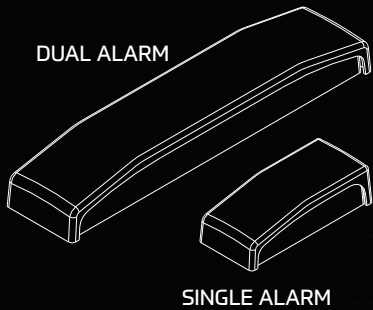
ALARM | ALERT | DETER | PROTECT

User Manual & Instructions



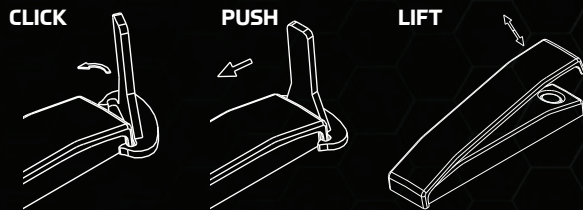
vanguardian.co.uk

THE VANGUARDIAN DUAL & SINGLE ALARM



FITTING THE ALARM

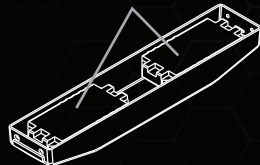
CLICK the removal tool onto the end of the alarm.
PUSH the tool and LIFT off the cover plate.



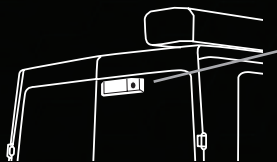
Remove the 4 anchor screws from each corner and remove the base.



With the base removed, locate and remove the 2 tabs to initiate power to the electronics.



NOW...

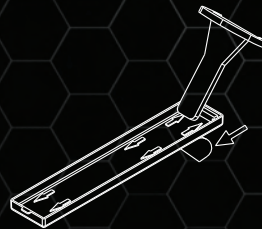


Locate and clean the surface area where you want to position your VANGUARDIAN and use the 3M wipe provided.

VEHICLE & ASSET ZONAL ALARM SYSTEM

PLEASE NOTE:

LEAVE 20mm CLEARANCE AROUND YOUR VANGUARDIAN TO FIT THE REMOVAL TOOL.

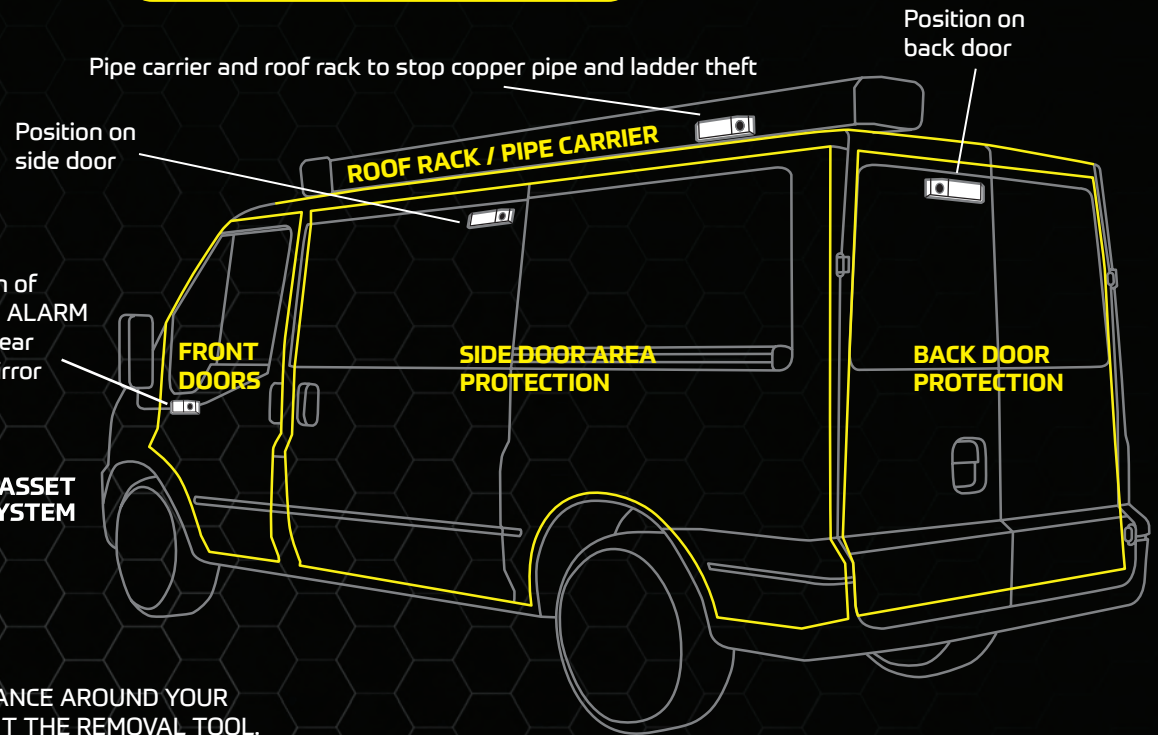


Once in position, take the removal tool and begin to apply pressure across the whole of the base area rubbing from corner to corner to activate the adhesive molecules.

Finally...reattach the cabinet to the base using the fixing screws and "click" and LOCK the cover into place...Your VANGUARDIAN ALARM is now complete.

Scan the QR code for the fitting video.

A TYPICAL INSTALLATION



Once you are happy... peel off the protective film cover to expose the adhesive backing and offer your base into position.

VANGUARDIAN is a Pre-emptive, visible, audible **ZONAL ALARM** crime deterrent.

Designed to PROTECT the at risk areas on a vehicle and ALERT against the potential threat of damage to doors and locks and guard against the possible threat of copper pipe theft from a "pipe" carrier or ladders from a roof rack.

The alarm unit(s) should be positioned in relative proximity to vulnerable areas in order to give maximum PROTECTION and with MULTIPOINT connectivity. All VANGUARDIAN alarm units are pre-paired and controlled from one master remote control.

