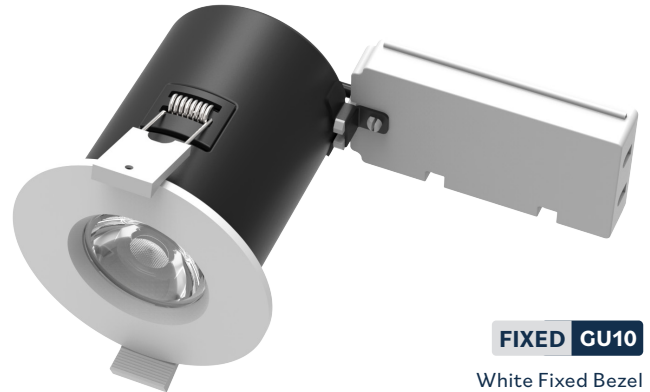


Fixed Bezel Fire Rated Downlight, Suitable for mains powered LED GU10 base lamps, IP20

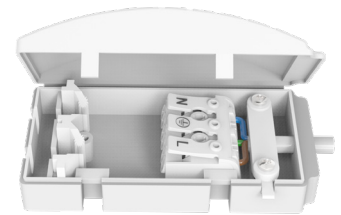
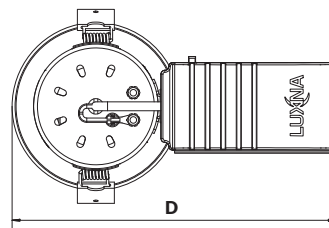
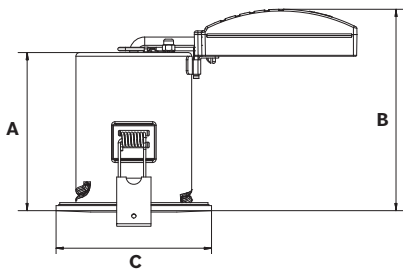
Technical Specification:

| | |
|---------------------------|--|
| Primary Materials | Steel housing, Diecast aluminium bezel |
| Terminal Block Connector | Push-Fit Terminals, Loop in/Loop Out |
| Wattage Max | 7W LED |
| Lampholder | GU10 Cap |
| Ingress Protection | IP20 |
| Fire Rating | 30, 60, 90 Minute Ceilings |
| Sound Insulation Rating | Part E |
| Tilt Angle | 0° |
| Safety Class Rating | Class I |
| Operating Temperature | -10°C to +40°C |
| Input Voltage & Frequency | AC220-240V 50/60Hz |
| Warranty* | 5 Years |
| Lamp | Lamp not included |



Dimensions:

Fixed Bezel GU10 Downlight and Terminal connector



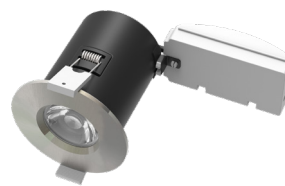
Tool-free installation, Push-fit terminals with loop in/loop out facility

Product Range Data:

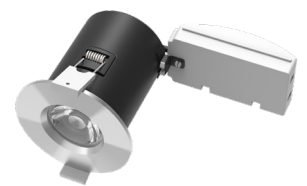
| Part No. | Colour Finish | Dimensions A x B x C x D | Cut Out Ø | IP Rating | Class Rating | Weight |
|--------------|---------------|--------------------------|-----------|-----------|--------------|--------|
| LXFRDG/F/WH | White | 88 x 112 x 86 x 167mm | 73mm | IP20 | Class I | 0.25kg |
| LXFRDG/F/SCH | Satin Chrome | 88 x 112 x 86 x 167mm | 73mm | IP20 | Class I | 0.25kg |
| LXFRDG/F/CH | Chrome | 88 x 112 x 86 x 167mm | 73mm | IP20 | Class I | 0.25kg |

Lamps: (Order Separately)

| Part No. | Description |
|-----------------|---------------------------------|
| LXGU10LED/4.5WW | 4.5W, GU10, 2700K, Non-Dimmable |
| LXGU10LED/4.5NW | 4.5W, GU10, 4000K, Non-Dimmable |
| LXGU10LED/4.5CW | 4.5W, GU10, 6000K, Non-Dimmable |
| LXGU10LED/5WWD | 5W, GU10, 2700K, Dimmable |
| LXGU10LED/5NWD | 5W, GU10, 4000K, Dimmable |
| LXGU10LED/5CWD | 5W, GU10, 6000K, Dimmable |



Satin Chrome Fixed Bezel



Chrome Fixed Bezel

*Warranty terms and conditions apply

Product specifications and values may change due to developments and improvements in lighting technology. International standards set the tolerance in colour temperature, lumen output and connected power load at ±10%. The data values apply to an ambient temperature of +25°C. Specification details are subject to change without prior notification. E&OE. LXFRDGFV1.2.24