

Doxa II LED Emergency Exit Sign

Please read these instructions thoroughly before use and retain for future reference.

The Emergency Exit Sign is a maintained or non-maintained luminaire supplied with adaptable self-fitted graphics that can be arranged to indicate escape routes as necessary for suspension, wall or ceiling mounting.

Products covered:

DOX20103

Safety Information

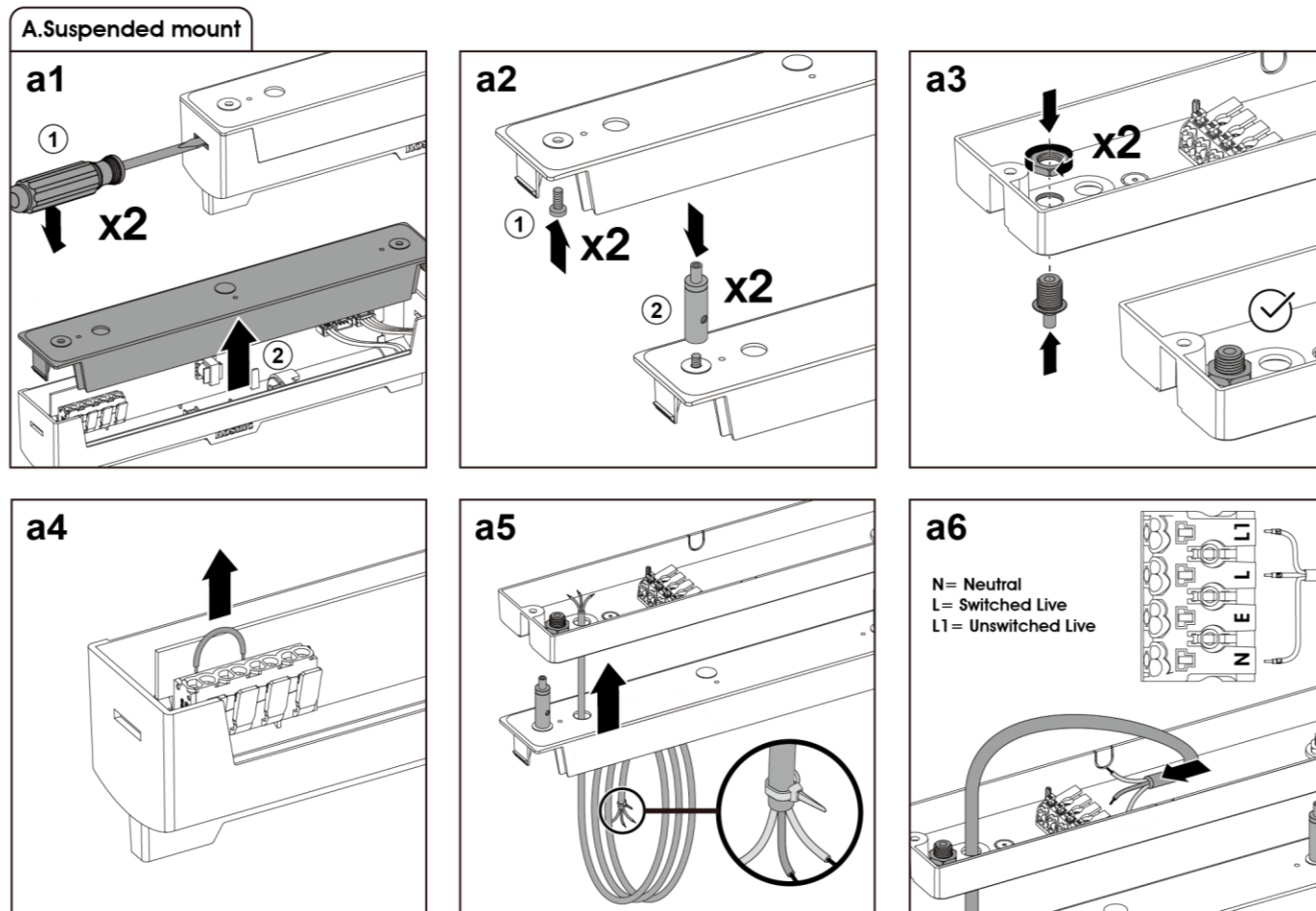
- Installation must be carried out in accordance with national building and wiring regulations.
- If you are in any doubt about installing this product, please consult a qualified electrician.
- Before commencing installation or servicing, turn off and isolate the circuit to be worked on by removing the fuse or switching the circuit breaker off at the distribution board.
- This product is suitable for connection to a 220-240Vac 50/60Hz supply.
- This is a **Class II, IP20** rated product and does not have an earth connection.
- The emergency fitting is not suitable for use on a battery supply, trickle or intermittent re-charging circuit.
- The emergency fitting is not protected against supply voltage polarity reversal.
- The recharging device will recharge the battery normally after removal of a battery short-circuit.
- When cutting holes, drilling or screwing take care not to damage existing wiring or pipework.

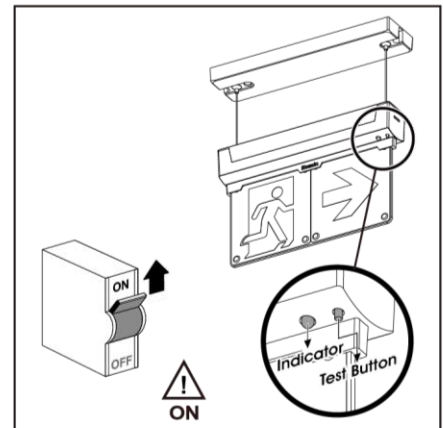
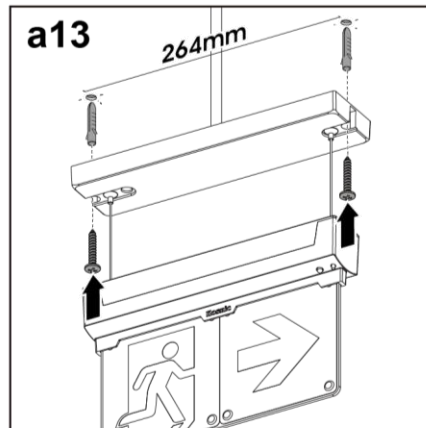
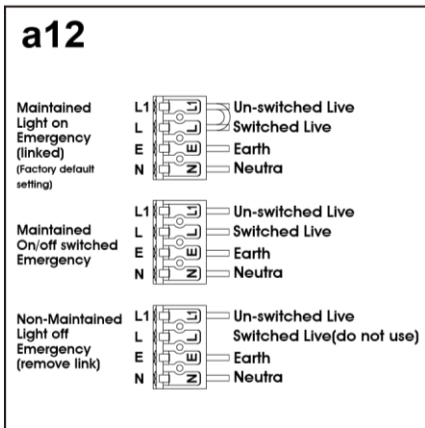
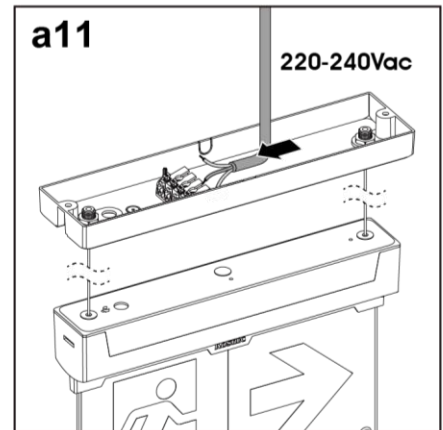
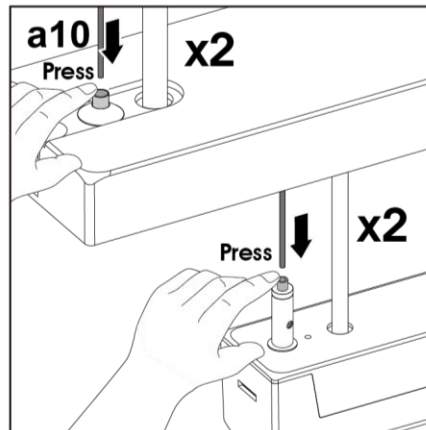
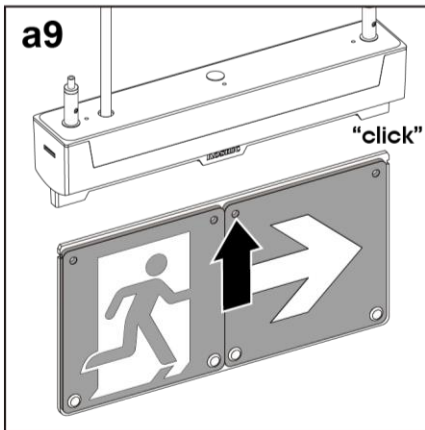
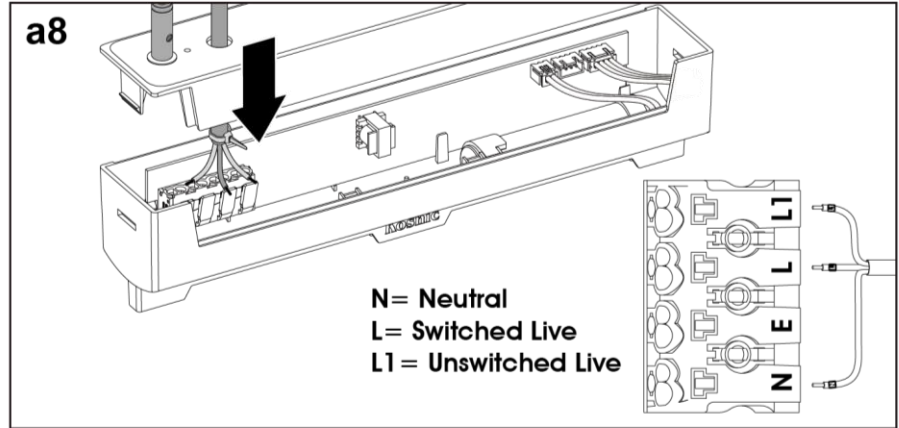
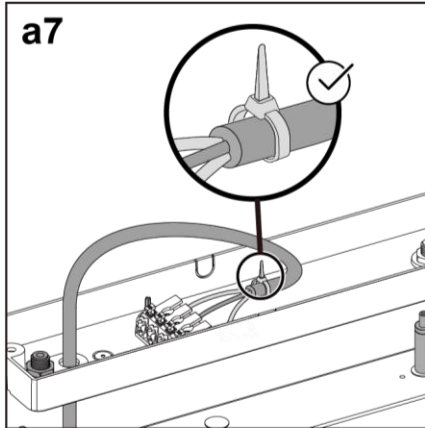
Installation Information

- Referring to the diagram supplied as below for installation.
- The luminaire can be used in both **maintained** mode (normal operation and emergency operation) or **non-maintained** mode (emergency operation only) according to the wiring as diagram below.
- Ensure that all electrical connections are tighten with no loose strands and secure any glands as necessary.
- **Ensure battery is connected.**
- Write the commissioning date on the battery label.
- Stick the Maintained or Non-Maintained emergency luminaire label on the luminaire where it can be seen.
- The battery leaves the factory in a charged state but may take up to 24 hours to fully charge for a 3-hour duration test. Charge for 5 minutes before performing a functional test to ensure there is some charge in the battery.
- There is a button on the lower edge to quickly do a functional emergency test.
- To fully test the emergency function, the supply will need to be turned off.

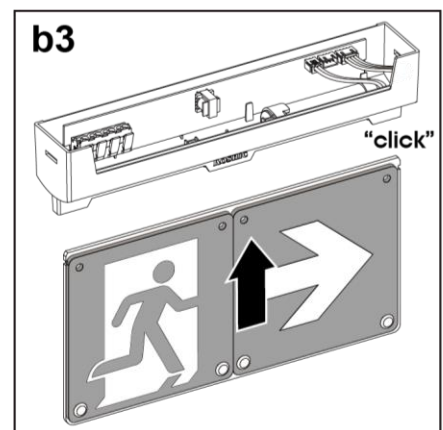
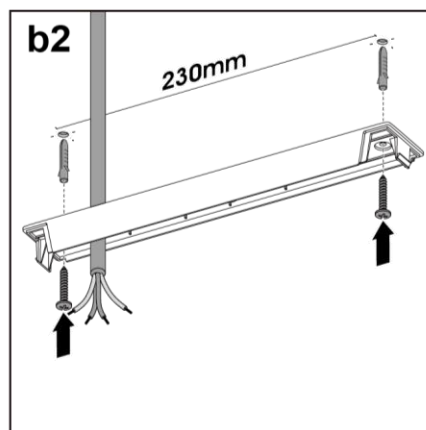
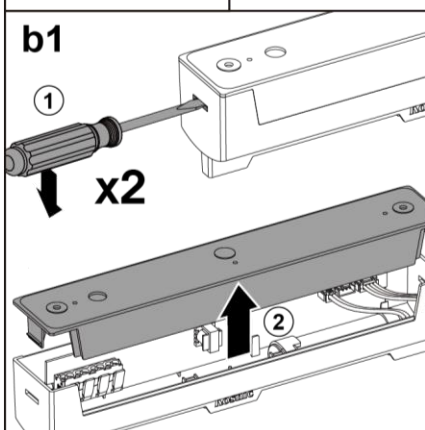
Battery Replacement

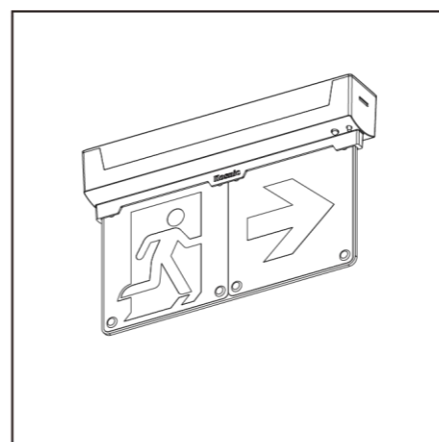
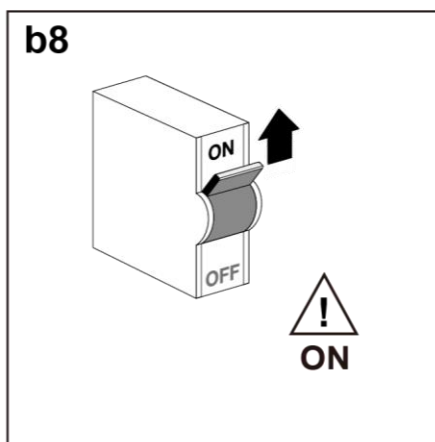
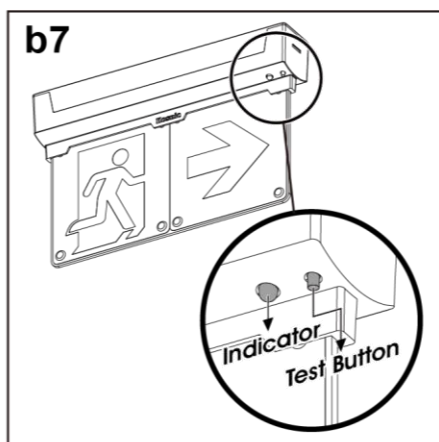
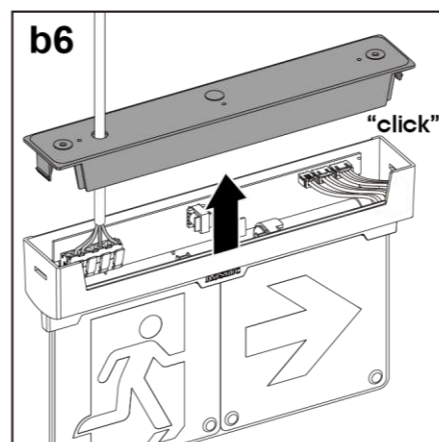
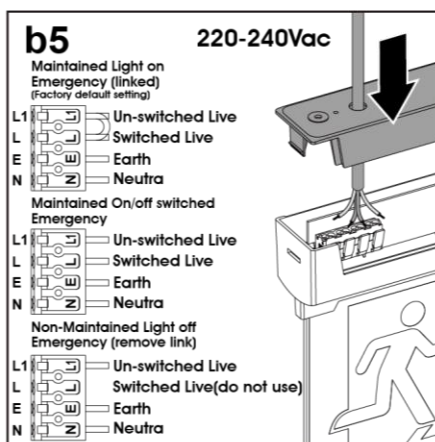
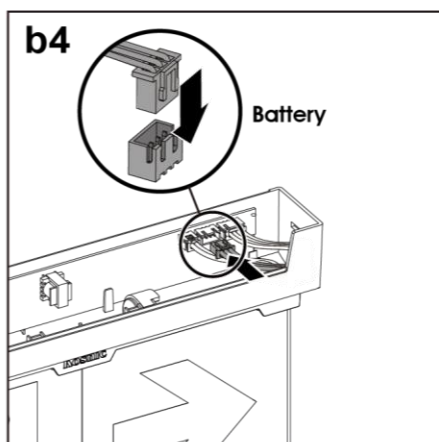
- Turn off and isolate the circuit by removing the fuse or switching the circuit breaker off at the distribution board.
- Unclip the luminaire from the mounting bracket, if necessary.
- Insert a small screwdriver into the slots on the sides to release the clips and separate the main body from the top cover.
- Disconnect the battery cable and remove the old battery.
- Write the commissioning date on the battery label and connect the grey and white battery cable to the socket on the end of the PCB.
- Replace the cover and reconnect the supply.



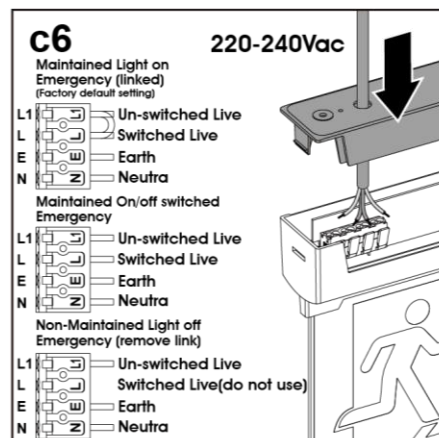
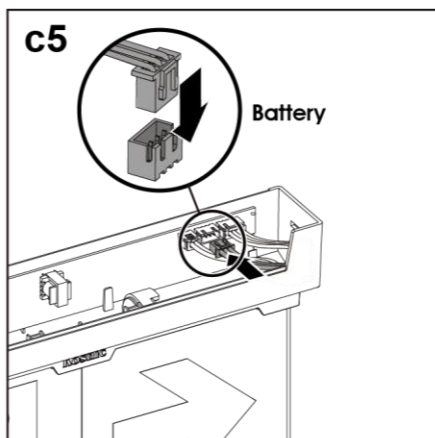
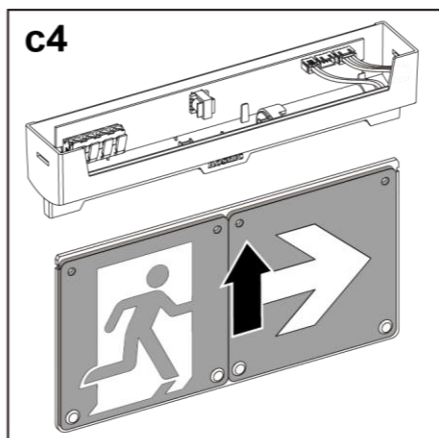
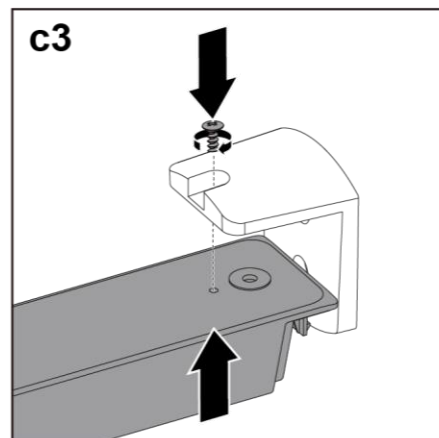
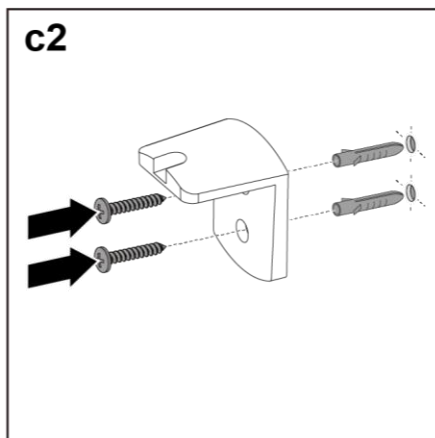
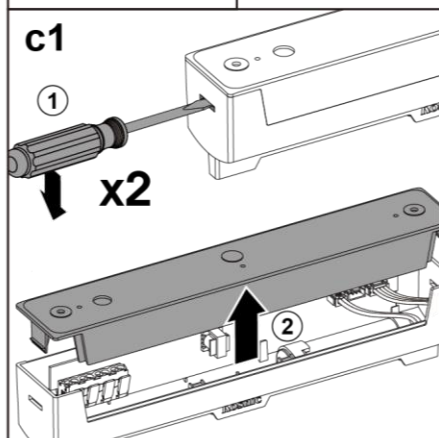


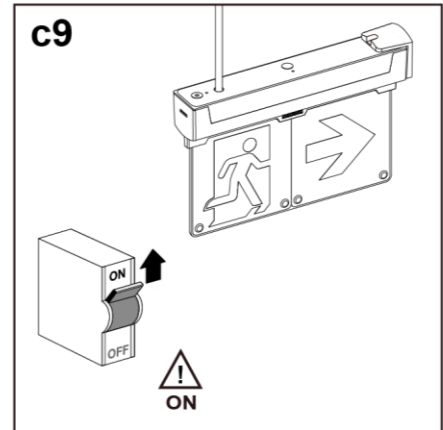
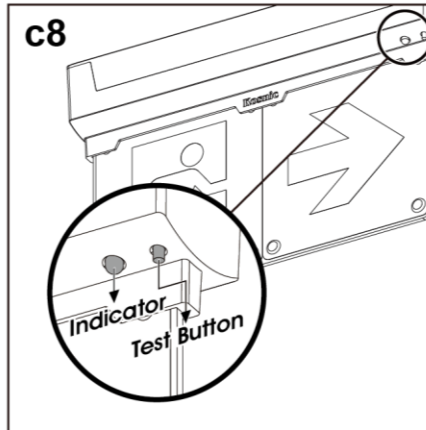
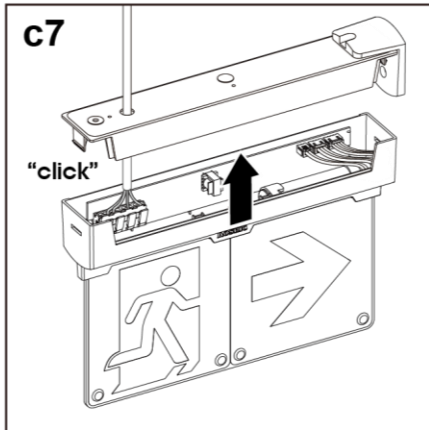
B.Surface mount



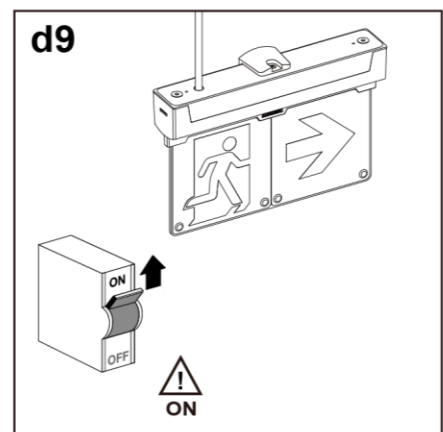
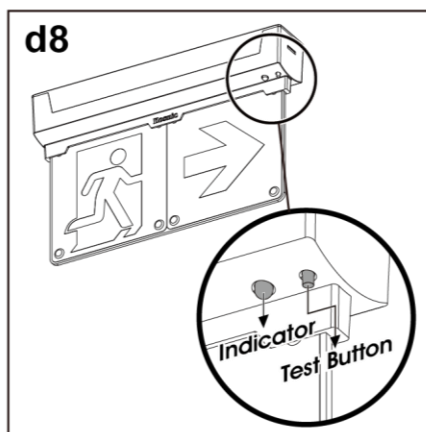
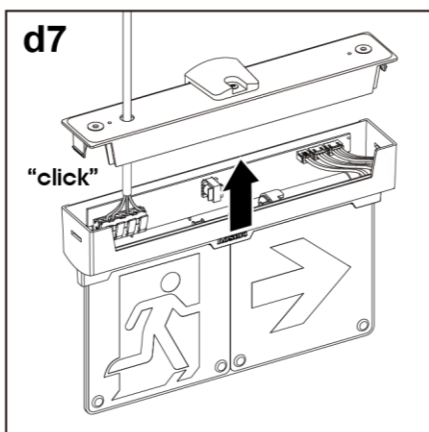
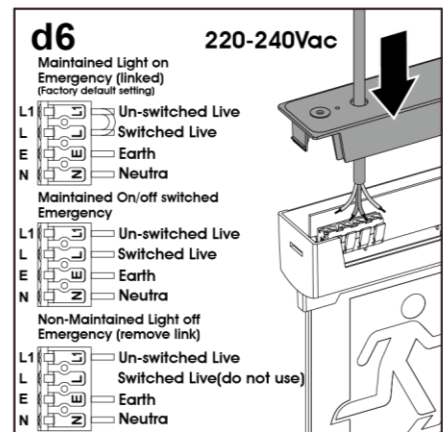
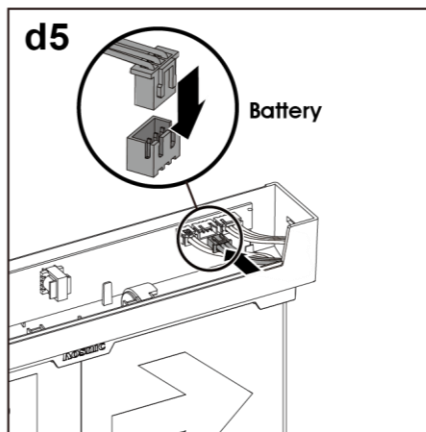
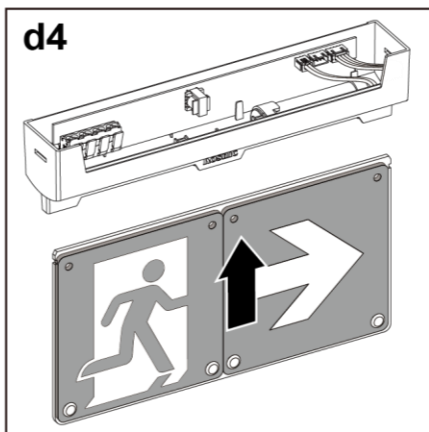
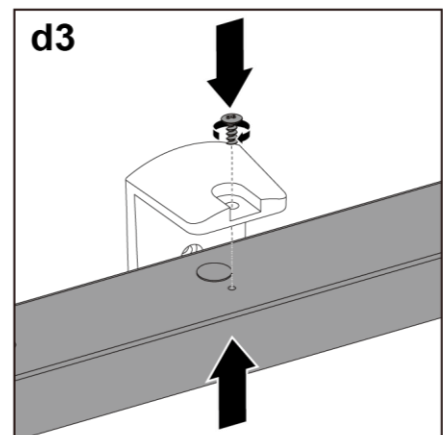
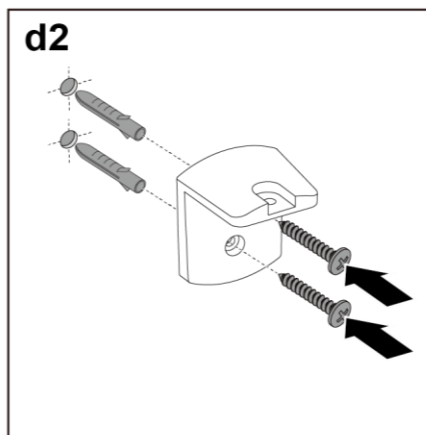
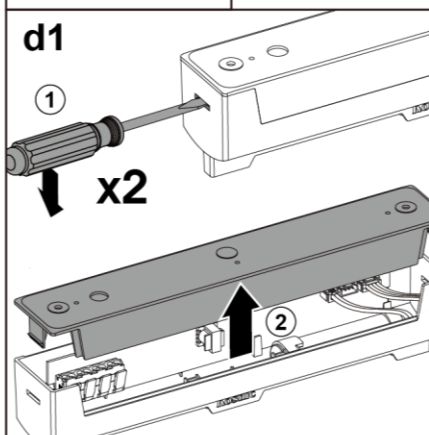


C.Side Wall-mount

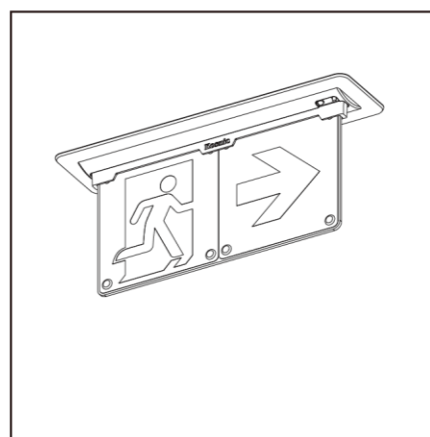
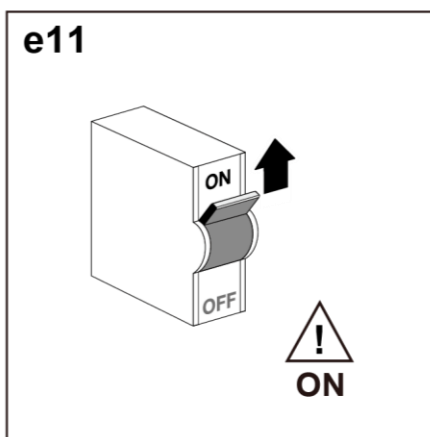
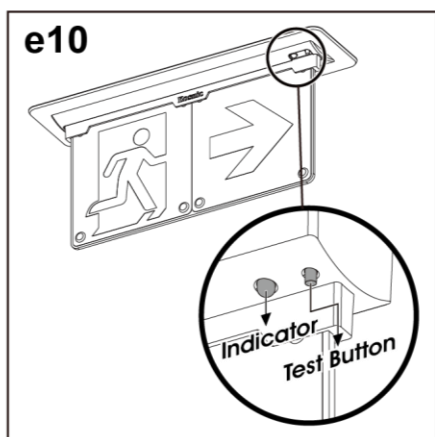
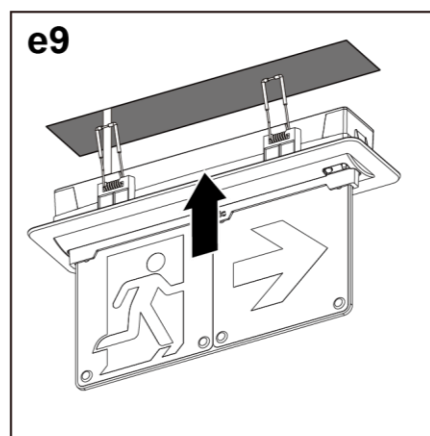
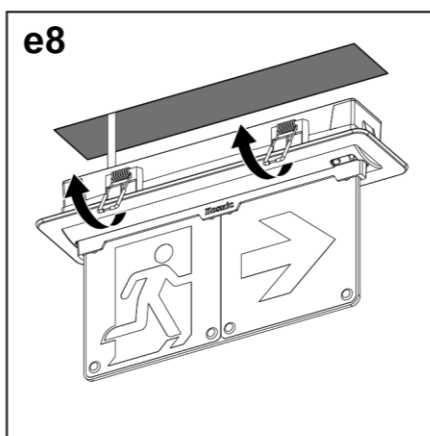
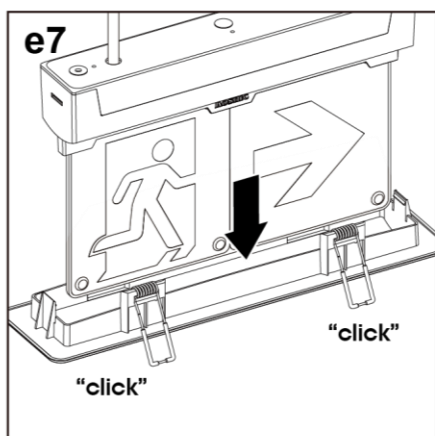
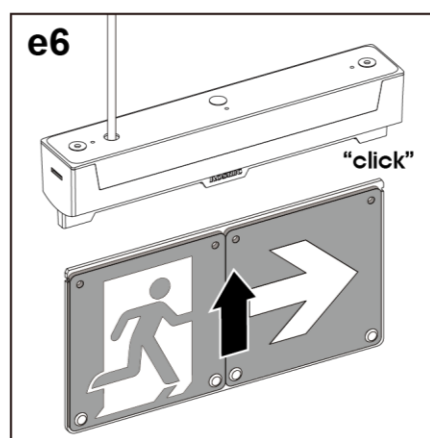
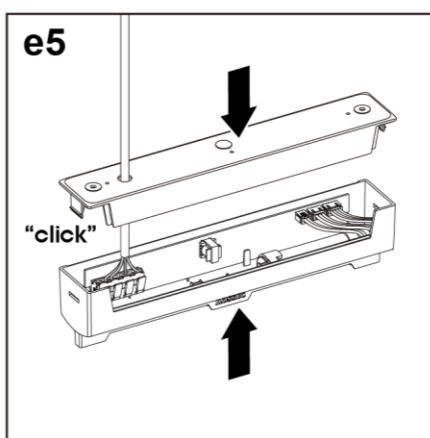
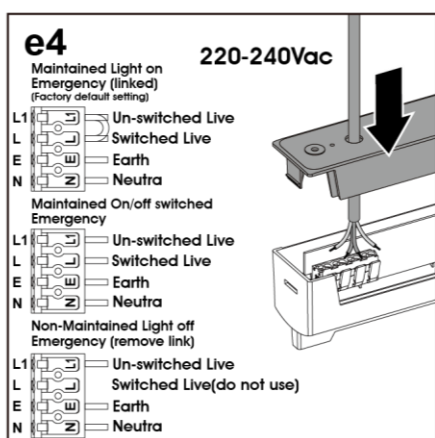
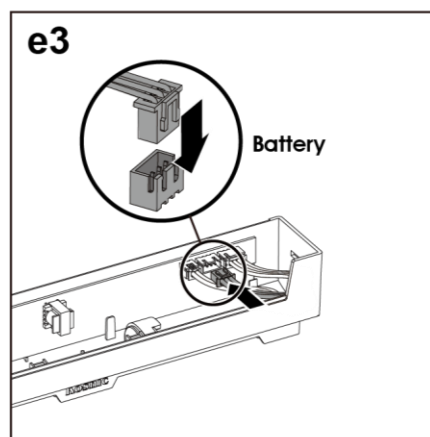
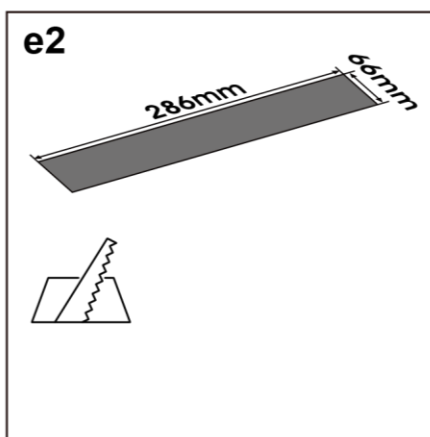
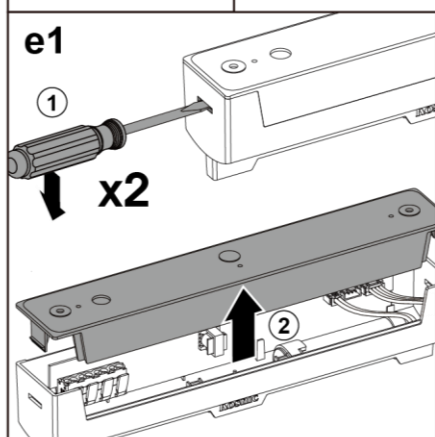




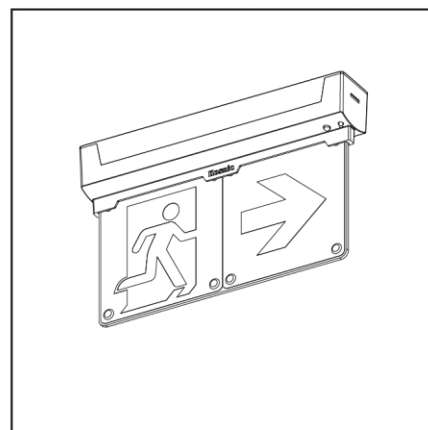
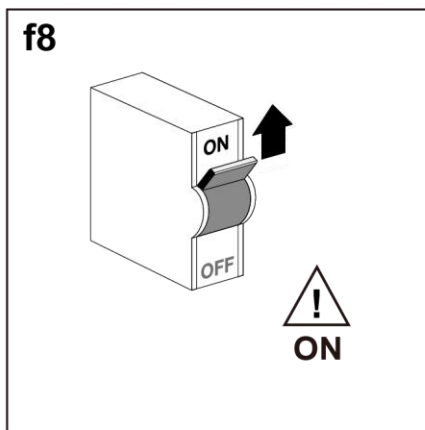
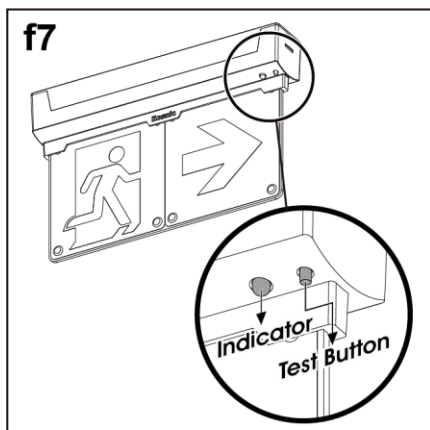
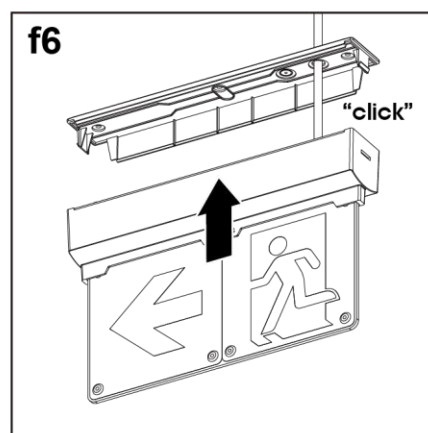
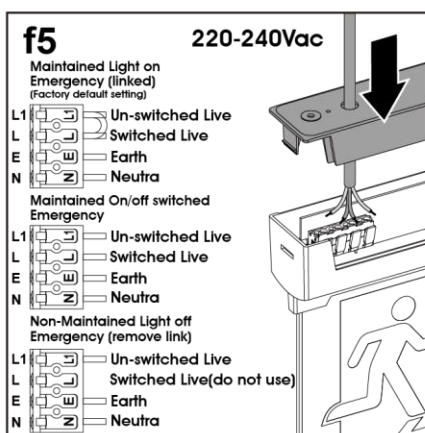
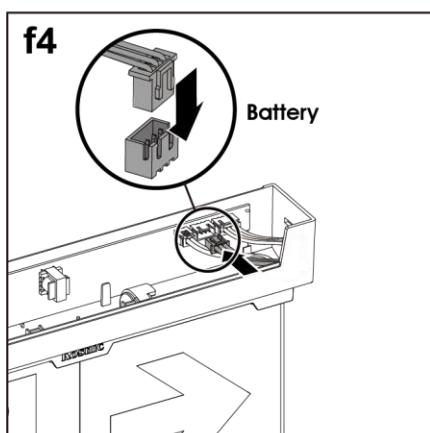
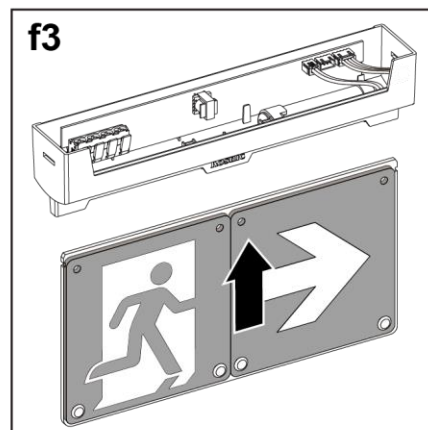
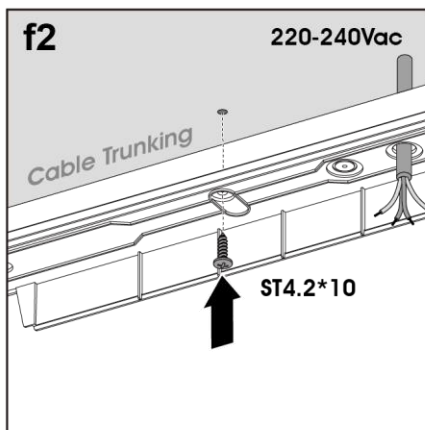
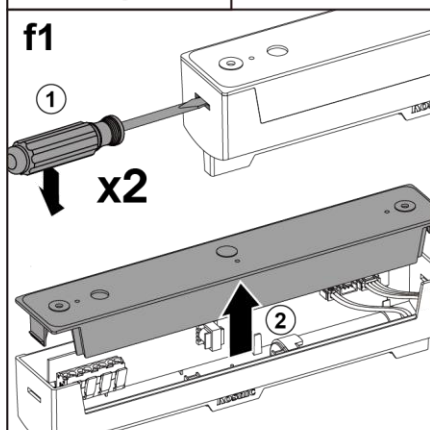
D. Wall-mount



E. Recessed mount



F.Trunking mount



The Waste Electrical & Electronic Equipment Regulations (WEEE) require that products bearing this symbol must not be disposed of with household waste as they may contain substances harmful to the environment. The Local Authority can provide advice on recycling.