



# WEATHERGUARD ECO-MOTION

## WITH INTEGRATED MICROWAVE SENSOR

Red Arrows Integrated Eco-Motion Microwave sensor is the sensible choice for cutting energy usage and only illuminating a space when presence is detected.

Suitable for pairing with all Weatherguards, This market leading microwave sensor offers fully programmable and adjustable settings making this perfect for all applications.



REPLACEABLE  
**LEDs**



### Features

- Upto 60% Energy & Cost Saving
- Integrated Microwave sensor
- Daylight sensor prevents switch on when adequate brightness available
- Adjustable sensitivity, hold time and ambient threshold
- Simple to programme
- Detection Range upto 10m
- Suitable for mounting heights upto 4m

### MICROWAVE DETECTOR FOR LUMINAIRE INTEGRATION

A microwave detector with on/off control and daylight sensor. Contains optional detection range, holdtime and daylight threshold.

#### DIP SWITCH SETTINGS

1	2	
●	●	100%
○	●	75%
●	○	50%
○	○	10%

Detection Range (Sensitivity)

3	4	
●	●	5s
○	●	90s
●	○	5min
○	○	15min

Hold-Time (Time Delay)

5	6	
●	●	Disable
○	●	50lux
●	○	10lux
○	○	2lux

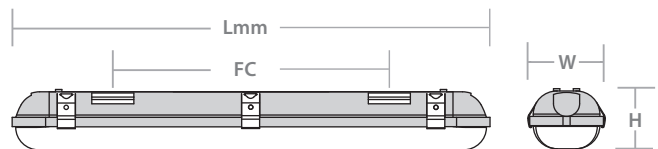
Daylight Threshold (Ambient Light)



### Specification

<b>Material:</b>	Body & Diffuser: Polycarbonate Retaining Clips: Stainless Steel
<b>Colour Temperature:</b>	4000K
<b>Colour Finish:</b>	Yellow
<b>CRI:</b>	Ra>80
<b>LED Lifetime:</b>	L80B50 30,000 Hrs
<b>IP Rating:</b>	IP65
<b>IK Rating:</b>	IK07
<b>Working Temperature:</b>	-25°C to 40°C (Emergency version 0°C to 40°C)
<b>Emergency Battery Type:</b>	LiFePO4
<b>Power Factor:</b>	>0.9
<b>Electrical Class:</b>	Class I
<b>Guarantee:</b>	3 Years

### Dimensions



Product Code	Dimensions	Fixing Centres FC
WGS220Y/MS	L: 664mm x W: 103mm x D: 78mm	400mm
WGS220Y-E/MS	L: 664mm x W: 103mm x D: 78mm	400mm
WGS220Y/PC-MW	L: 664mm x W: 103mm x D: 78mm	400mm
WGS220Y-E/PC-MW	L: 664mm x W: 103mm x D: 78mm	400mm

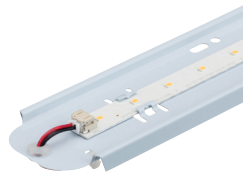
**WeatherGuard ECO-MOTION Site with Intergrated Microwave Sensor**

Product Code	Description	Length	Wattage	Lumen Output	Emergency Lumen Output	Efficacy	Power Factor	Weight	Barcodes
WGS220Y/MS	Weatherguard Site IP65 110V 20W 4000K c/w Internal Microwave Sensor	600mm	20W	2000 lm	-	100 lm/W	0.9	0.78	5055807625791
WGS220Y-E/MS	Weatherguard Site IP65 110V 20W 4000K 3 Hr EM c/w Internal Microwave sensor	600mm	20W	2000 lm	180 lm	100 lm/W	0.9	1.08	5055807625807

**WeatherGuard ECO-MOTION Site with Intergrated Microwave Sensor, Flex & Junction Box**

Product Code	Description	Length	Wattage	Lumen Output	Emergency Lumen Output	Efficacy	Power Factor	Weight	Barcodes
WGS220Y/PC-MW	Weatherguard Site IP65 110V 20W 4000K c/w Flex, JB, Microwave Sensor	600mm	25W	2500 lm	-	100 lm/W	0.9	1.45	5055807626378
WGS220Y-E/PC-MW	Weatherguard Site IP65 110V 20W 4000K 3 Hr EM Flex, JB, Microwave Sensor	600mm	25W	2500 lm	225 lm	100 lm/W	0.9	1.45	5055807626385

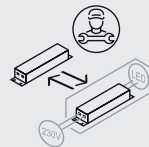
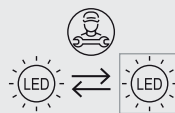
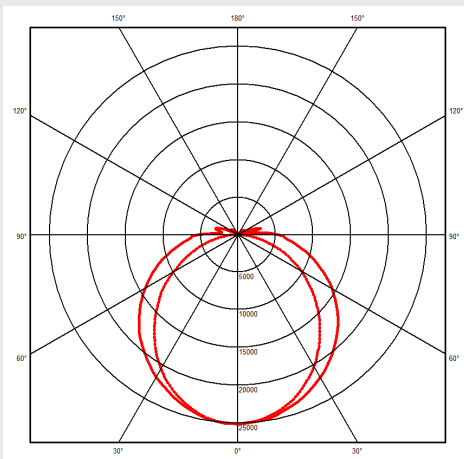
Product Code	Description	Dimensions	Power Consumption	Weight (Kg)	Barcode
MWD/H6/110	Microwave detector for luminaire integration	L: 126 x W: 32 x D: 36mm	0.5W	0.08	5055807622806
WG-MAGKIT	Weatherguard Magnetic Kit (Set of 2)	-	-	-	5055807626545



**Maximum Fittings Per Circuit**

Automatic Circuit Breaker Type:	B6	B10	B13	B16	B20	C10	C13	C16	C20
Rated Current:	6A	10A	13A	16A	20A	10A	13A	16A	20A
Cable (mm):	1.5	1.5	1.5	1.5	2.5	1.5	1.5	1.5	2.5
WGS220Y/MS WGS220Y-E/MS:	14	56	56	56	98	56	56	56	98
WGS220Y/PC-MW WGS220Y-E/PC-MW:	14	56	56	56	98	56	56	56	98

**Light Distribution Curve**



[www.redarrowelectrical.co.uk](http://www.redarrowelectrical.co.uk)

**ENERGY**

**Red Arrow**  
WGS\_MWD/H6

A

B

C

D

E

F

G

**F**

**20-25**  
kWh/1000h

2021 No. 1095