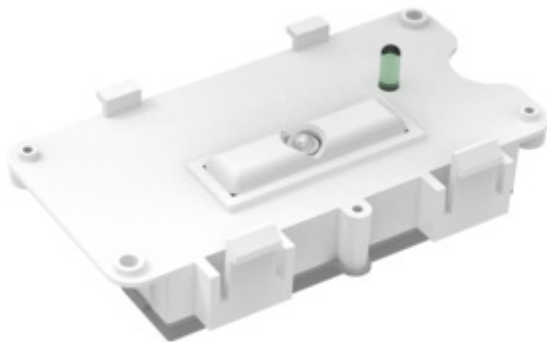


## Amenity

### Grafham Bulkhead Emergency Conversion Pack 2W Plug & Play

Grafham Bulkhead Emergency Conversion Pack 2W Plug & Play



#### General Data

<b>Mounting options</b>	Internal
<b>Input Electrical Connection</b>	Plug & Play
<b>General Application</b>	Commercial   Industrial   Educational
<b>Operating Temperature Range °C</b>	0 - +30
<b>Warranty (Years)</b>	3

#### Electrical Data

<b>Wattage (W)</b>	2
<b>Total power consumption (W)</b>	2
<b>Mains voltage (V)</b>	Plug & Play
<b>Electrical protection</b>	Class II
<b>Control Gear Type CC or CV</b>	Constant Current
<b>Driver Brand</b>	Lumineux
<b>Nominal Frequency (Hz)</b>	50   60

430963

## Technical Specification

### Emergency Data

<b>Battery Type</b>	LiFeP04
<b>Battery Capacity (mAh)</b>	1500
<b>Battery Warranty (Years)</b>	2
<b>Recharge Time (Hours)</b>	24 Hours
<b>Emergency Type</b>	Maintained
<b>Test Procedure</b>	Manual
<b>Emergency Duration (Hours)</b>	3

### Physical Data

<b>Housing Colour</b>	White
<b>Body Material</b>	PC
<b>Nominal Product Length (mm)</b>	124.76
<b>Nominal Product Width (mm)</b>	71.41
<b>Nominal Product Height (mm)</b>	30.6
<b>Weight (kg)</b>	0.116

### Standards and Approvals

<b>Manufactured In Accordance To</b>	EN 60598-1 EN 60598-2
<b>CE Mark</b>	Yes
<b>UKCA Mark</b>	Yes
<b>WEEE Symbol</b>	Yes
<b>Certificate of Conformity</b>	Available on Request
<b>Accredited Members</b>	LIA, ISO9001