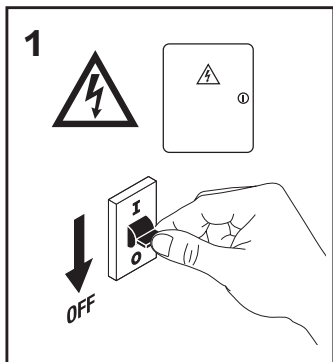


## LXLN/MWS

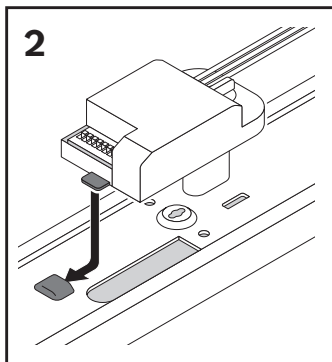
Microwave Sensor

For use with LXBAT/LXNCF/LXSL PRO Range

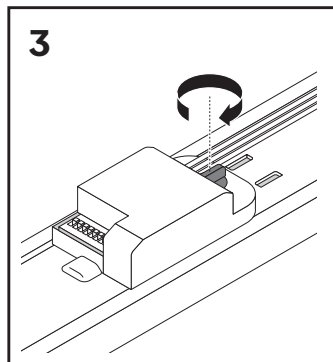
## Installation Instructions



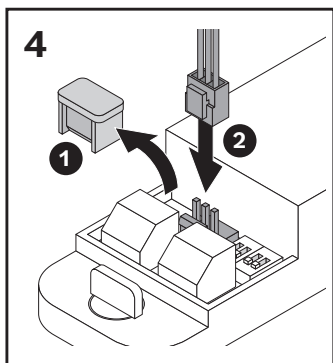
Before commencing any installation or maintenance work, ensure that the electrical mains supply is isolated and circuit fuses are switched off.



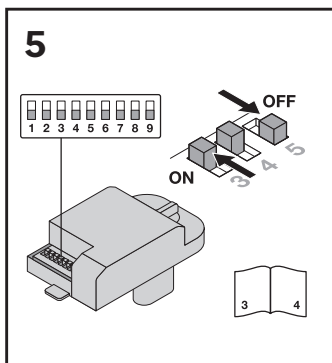
Locate the position marked **MS or Sensor** on the luminaire gear tray. With the Dip switches facing upwards, Insert the sensor module tabs into the fixing plate and the sensor into the hole.



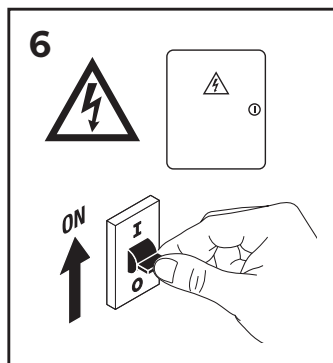
Secure the sensor in position by rotating the locking nut 90°. Ensure that there are no trapped cables and the sensor is fixed firmly into place.



Remove the plastic cover **1** from the LED driver terminal marked **Sensor In**. Connect the plug on the end of the microwave sensor cable into the terminal **2**.



Finally, make any necessary adjustments to the sensor's settings using the on-board DIP switches.



Restore the mains power supply, switch on and test for satisfactory operation.

Refer to the sensor guide to configure your preferred function settings below:

## On/Off



1	2	
ON	ON	100%
–	ON	75%
ON	–	50%
–	–	25%



### Hold Time

3	4	5	
ON	ON	ON	5s
–	ON	ON	30s
ON	–	ON	1min
–	–	ON	3min
ON	ON	–	5min
–	ON	–	10min
ON	–	–	20min
–	–	–	30min



### Daylight Sensor

6	7	8	
ON	ON	–	Disable
–	–	ON	<50 LUX
ON	–	ON	<25 LUX
–	ON	ON	<10 LUX
ON	ON	ON	<2 LUX



## Sensor Mode

9	
-	ON/OFF

## Dimming



1	
ON	100%
—	50%



### Hold Time

<b>2</b>	<b>3</b>	
ON	ON	5s
–	ON	90s
ON	–	5 min
–	–	10min



### Daylight Sensor

4	5	
ON	ON	Disable
–	ON	<50 LUX
ON	–	<25 LUX
–	–	<10 LUX

**DIM Period**

6	7	
ON	ON	0s
–	ON	10s
ON	–	15min
–	–	$\infty$

**DIM Level**

8	
ON	10%
-	30%



### Sensor Mode

9	
ON	Dimming

See website for further details including warranty terms and conditions