

Emergency Modules

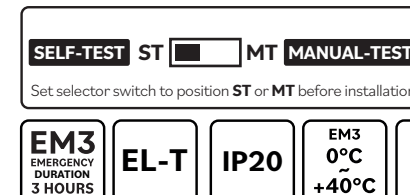
For use with LXBHR/11-18/P



LXBH/EMM



LXBH/EMM/ST

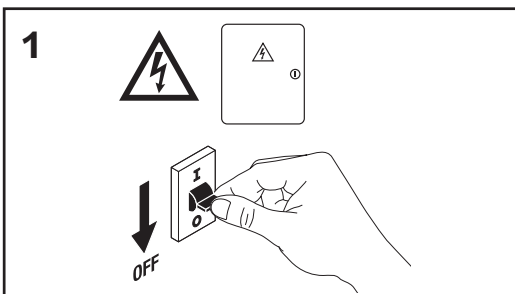


Emergency Luminaire Connection and Testing

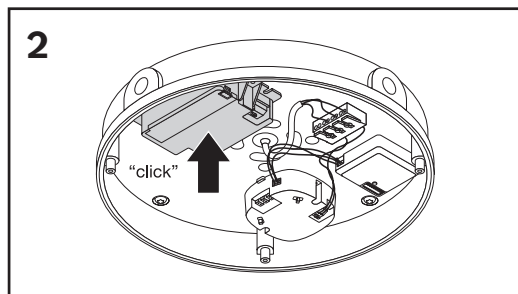
1. The Emergency luminaire requires an unswitched live supply L2 in addition to the switched live supply L1
2. Ensure that the battery cells supply cable is connected to the Emergency module before mains power is restored.
3. Once installed, the batteries must be charged for a minimum of 24 hours before carrying out a full discharge and commissioning test to check that they are charging correctly and that the maintained 3-hour discharge duration is being achieved. The date should be noted on the battery.
4. The Green LED Indicates that the batteries are charging.
5. Emergency luminaires should be routinely inspected and tested in accordance with current **BS 5266** guidelines. Refer to **BS 5266 & BS EN 50172** for full Emergency Lighting requirements and testing procedures.
6. A log report must be completed and kept for the initial commissioning and periodic test procedure. A copy of the Emergency test record sheet can be downloaded by scanning the product QR Code above. Further copies can be requested at sales@luxna.co.uk.
7. A completed copy of the Emergency test record sheet must accompany any product returned to the manufacturer.

Emergency luminaires must not be installed in areas where the ambient area temperature is above or below the recommended operating temperature range 0°C to +40°C

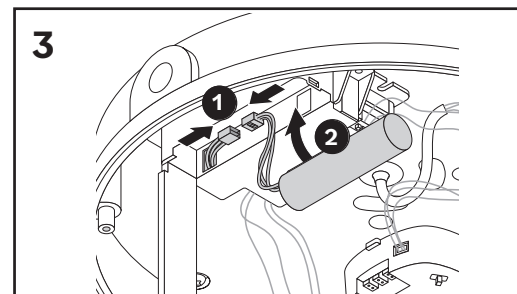
Installation Instructions



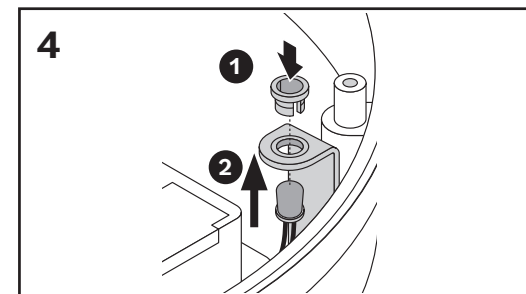
Before commencing any installation or maintenance work, ensure that the electrical mains supply is isolated and circuit fuses are switched off.



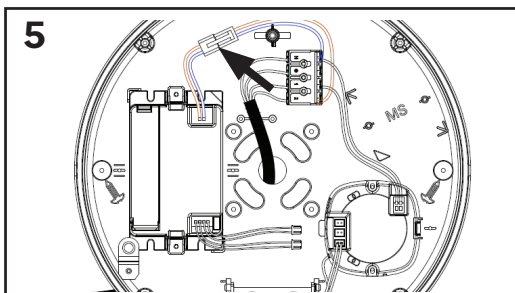
Locate the position marked **EM** on the luminaire base. Insert the emergency module between the two locking tabs and press down firmly for a secure fix.



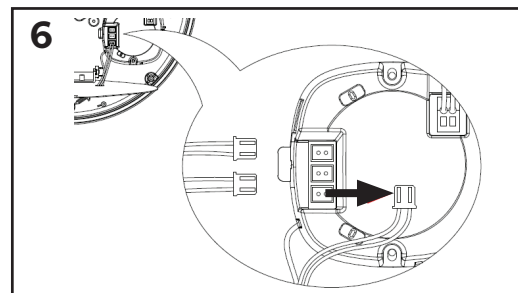
Open the lid marked **Press to open** on the emergency module to access the battery compartment. Connect the battery cable plug to the terminal **1** inside the battery compartment as shown. Replace the battery **2** into the compartment. Close the battery compartment lid.



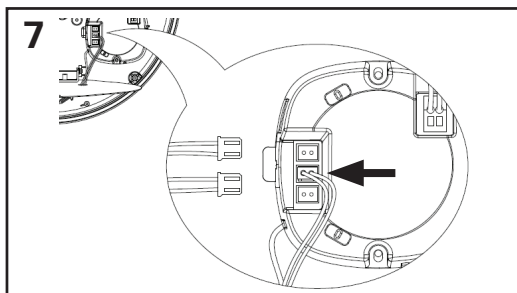
Carefully remove the small plastic holder **1** from the LED Indicator head then insert it into the bracket arm from the top. Push-fit the LED Indicator head **2** into the plastic holder from below the bracket arm 'Click'.



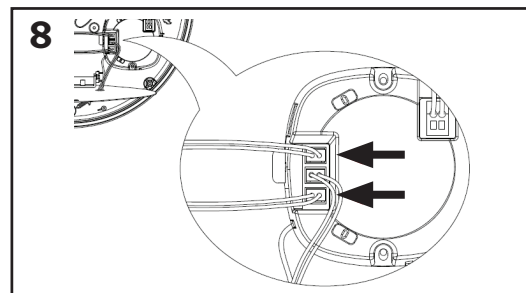
Connect the emergency module mains input plug cable into the pre-wired terminal block socket cable marked **Only for emergency pack connection**.



Locate the LED driver and unplug the cable with **RED PLUG** which connects the LED board to the terminal marked **CW-V+WW- BLACK TERMINAL**.



Insert the **RED PLUG** into the centre **RED TERMINAL** marked LED Supply



Plug the emergency module cable with the **BLACK PLUG** marked LED Supply into the driver terminal marked LED Driver output **BLACK TERMINAL**. Plug the emergency module cable with the **WHITE PLUG** marked LED Driver output into the driver terminal marked LED Supply **WHITE TERMINAL**.

See website for further details including warranty terms and conditions

When the installation or maintenance work is complete. Restore the mains power supply, switch on and test for satisfactory operation.