



Disco EVO

Part of the Bulkheads product category



Model Disco EVO 2 Microwave Sensor Emergency
Code ADIS2/1/MWS/M3
Application Ancillary, Commercial, Education, Healthcare, Hospitality, Residential, Retail

GENERAL INFORMATION

Input	220-240V
Wattage	10.5 - 18.5W
Operating Temp	0°C - 40°C
Lumens Delivered	(4000K) 9W: 1200lm 12W: 1800lm 16W: 2300lm
lm/W	(4000K) 9W: 135lm/W 12W: 145lm/W 16W: 145lm/W
CCT	3000/4000/6500K
UGR	26
Beam Angle	110

MATERIAL INFORMATION

Main Material	Polycarbonate
Diffuser Material	Polycarbonate
Product Weight without Packaging	1.085 kg
Colour / Finish	White
Diameter	325 mm
Height	85 mm

TECHNICAL INFORMATION

Class Protection	2
Light Source	LED
SDCM (Initial Macadam)	3
CRI	80
Internal / External	Internal / External
Surface / Recessed / Suspended	Ceiling, Wall
Power Factor	0.5
L70 @ 25°C	L70 B50 54,000h

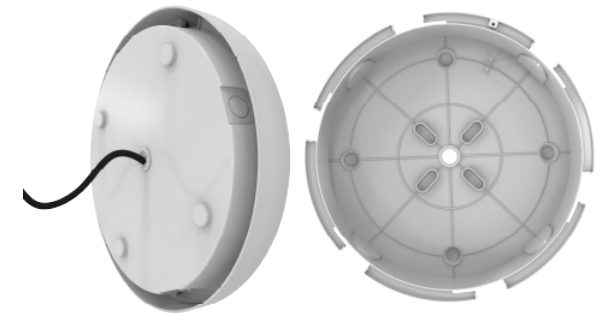
PRODUCT FEATURES

- Slim and modern bulkhead suitable for residential, commercial and industrial applications as well as ancillary areas
- High efficiency up to 145lm/W
- All polycarbonate construction with opal diffuser and white trim ring with optional chrome, satin chrome or graphite trim ring accessories
- CCT selectable between 3000K, 4000K and 6500K and power selectable; offering a choice of 3 outputs, in one luminaire
- Gear tray located on the bezel, allowing the base to be installed and then the bezel connected, this coupled with 4x 20mm conduit entry points on base ensure a quick and simple installation



Reinforced Base

Reinforced base with a pre-drilled back entry and grommet for enhanced durability and effortless installation





Disco EVO

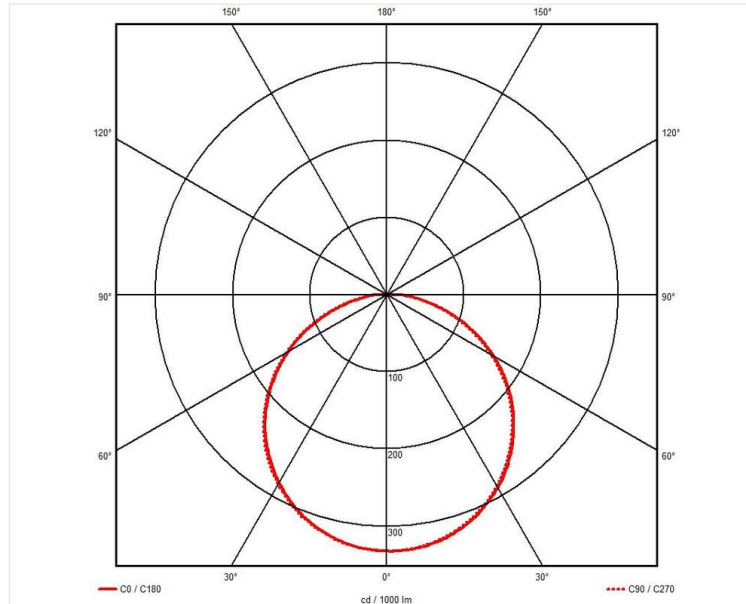
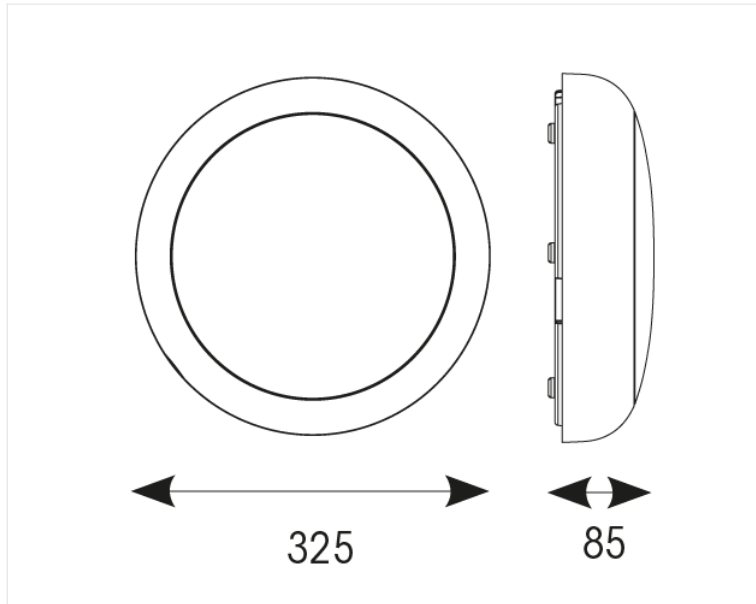
Part of the Bulkheads product category



Model Disco EVO 2 Microwave Sensor Emergency

Code ADIS2/1/MWS/M3

Application Ancillary, Commercial, Education, Healthcare, Hospitality, Residential, Retail



Fast and Easy Install
Twist-on diffuser and 2-part design with push-fit terminals allow quick and easy installation

Speed-Optimised Packaging
Packed with the base facing up and detached for a fast, hassle-free installation

Secure Installation
Secure and stable mounting now with four fixing points

Slim and Efficient
Up to 145mm/W inside a slender profile offers an efficient luminaires suitable for many applications

