



# Disco EVO

Part of the Bulkheads product category



|                    |  |
|--------------------|--|
| <b>Model</b>       | Disco EVO 1 Microwave Sensor   |
| <b>Code</b>        | ADIS1/1/MWS  |
| <b>Application</b> | Ancillary, Commercial, Education, Healthcare, Hospitality, Residential, Retail |

## GENERAL INFORMATION

|                         |   |
|-------------------------|---|
| <b>Input</b>            | 220-240V                                    |
| <b>Wattage</b>          | 4 - 7.5W                                    |
| <b>Operating Temp</b>   | -20°C - 40°C                                |
| <b>Lumens Delivered</b> | (4000K) 4W: 480lm 5W: 700lm 7W: 950lm       |
| <b>lm/W</b>             | (4000K) 4W: 120lm/W 5W: 140lm/W 7W: 140lm/W |
| <b>CCT</b>              | 3000/4000/6500K                             |
| <b>UGR</b>              | 22  |
| <b>Beam Angle</b>       | 110   |

## MATERIAL INFORMATION

|                               |               |
|-------------------------------|---------------|
| <b>Main Material</b>          | Polycarbonate |
| <b>Diffuser Material</b>      | Polycarbonate |
| <b>Product Weight without</b> | 0.705 kg      |
| <b>Packaging</b>              |               |
| <b>Colour / Finish</b>        | White         |
| <b>Diameter</b>               | 275 mm        |
| <b>Height</b>                 | 84 mm         |

## TECHNICAL INFORMATION

|                                       |                     |
|---------------------------------------|---------------------|
| <b>Class Protection</b>               | 2                   |
| <b>Light Source</b>                   | LED                 |
| <b>SDCM (Initial Macadam)</b>         | 3                   |
| <b>CRI</b>                            | 80                  |
| <b>Internal / External</b>            | Internal / External |
| <b>Surface / Recessed / Suspended</b> | Ceiling, Wall       |
| <b>Power Factor</b>                   | 0.5                 |
| <b>L70 @ 25°C</b>                     | L70 B50 54,000h     |

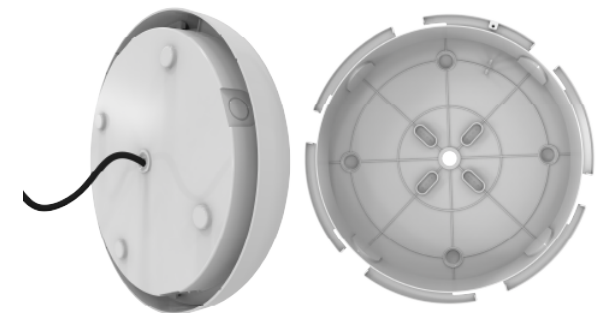
## PRODUCT FEATURES

- Slim and modern bulkhead suitable for residential, commercial and industrial applications as well as ancillary areas
- High efficiency up to 145lm/W
- All polycarbonate construction with opal diffuser and white trim ring with optional chrome, satin chrome or graphite trim ring accessories
- CCT selectable between 3000K, 4000K and 6500K and power selectable; offering a choice of 3 outputs, in one luminaire
- Gear tray located on the bezel, allowing the base to be installed and then the bezel connected, this coupled with 4x 20mm conduit entry points on base ensure a quick and simple installation



## Reinforced Base

Reinforced base with a pre-drilled back entry and grommet for enhanced durability and effortless installation



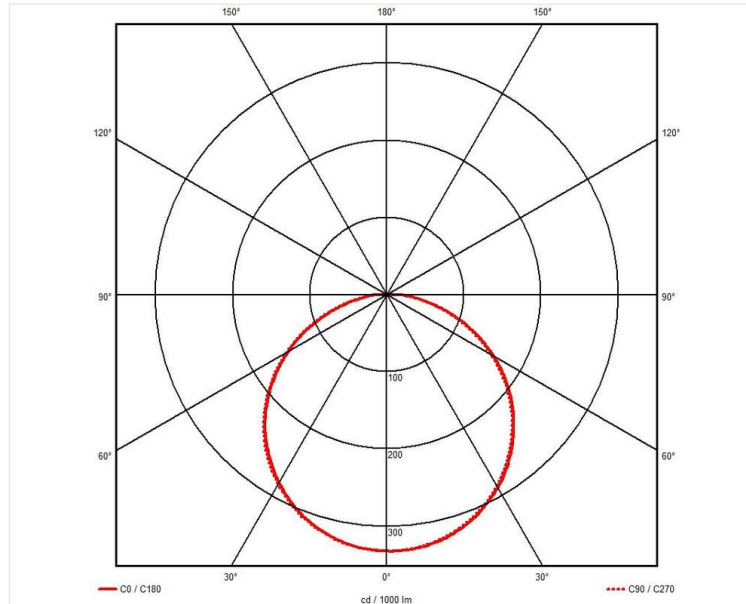
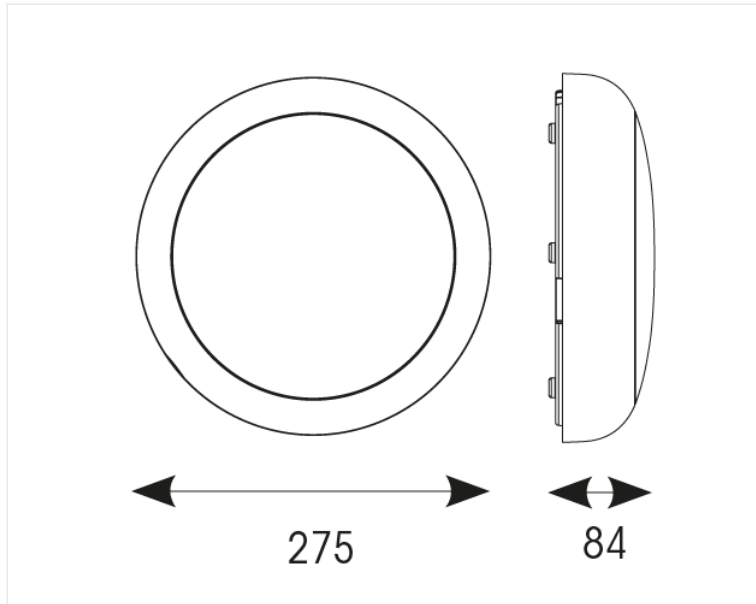


# Disco EVO

Part of the Bulkheads product category



**Model** Disco EVO 1 Microwave Sensor  
**Code** ADIS1/1/MWS  
**Application** Ancillary, Commercial, Education, Healthcare, Hospitality, Residential, Retail



**Fast and Easy Install**  
 Twist-on diffuser and 2-part design with push-fit terminals allow quick and easy installation

**Speed-Optimised Packaging**  
 Packed with the base facing up and detached for a fast, hassle-free installation

**Secure Installation**  
 Secure and stable mounting now with four fixing points

**Slim and Efficient**  
 Up to 145lm/W inside a slender profile offers an efficient luminaire suitable for many applications

