



# Disco EVO

Part of the Bulkheads product category



<b>Model</b>	Disco EVO 1 Emergency
<b>Code</b>	ADIS1/1/M3
<b>Application</b>	Ancillary, Commercial, Education, Healthcare, Hospitality, Residential, Retail

## GENERAL INFORMATION

<b>Input</b>	220-240V
<b>Wattage</b>	5.5 - 9W
<b>Operating Temp</b>	0°C - 40°C
<b>Lumens Delivered</b>	(4000K) 4W: 480lm 5W: 700lm 7W: 950lm
<b>lm/W</b>	(4000K) 4W: 120lm/W 5W: 140lm/W 7W: 140lm/W
<b>CCT</b>	3000/4000/6500K
<b>UGR</b>	22
<b>Beam Angle</b>	110

## MATERIAL INFORMATION

<b>Main Material</b>	Polycarbonate
<b>Diffuser Material</b>	Polycarbonate
<b>Product Weight without Packaging</b>	0.795 kg
<b>Colour / Finish</b>	White
<b>Diameter</b>	275 mm
<b>Height</b>	84 mm

## TECHNICAL INFORMATION

<b>Class Protection</b>	2
<b>Light Source</b>	LED
<b>SDCM (Initial Macadam)</b>	3
<b>CRI</b>	80
<b>Internal / External</b>	Internal / External
<b>Surface / Recessed / Suspended</b>	Ceiling, Wall
<b>Power Factor</b>	0.5
<b>L70 @ 25°C</b>	L70 B50 54,000h

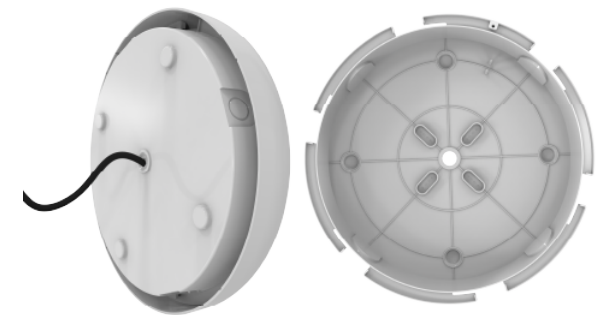
## PRODUCT FEATURES

- Slim and modern bulkhead suitable for residential, commercial and industrial applications as well as ancillary areas
- High efficiency up to 145lm/W
- All polycarbonate construction with opal diffuser and white trim ring with optional chrome, satin chrome or graphite trim ring accessories
- CCT selectable between 3000K, 4000K and 6500K and power selectable; offering a choice of 3 outputs, in one luminaire
- Gear tray located on the bezel, allowing the base to be installed and then the bezel connected, this coupled with 4x 20mm conduit entry points on base ensure a quick and simple installation



## Reinforced Base

Reinforced base with a pre-drilled back entry and grommet for enhanced durability and effortless installation



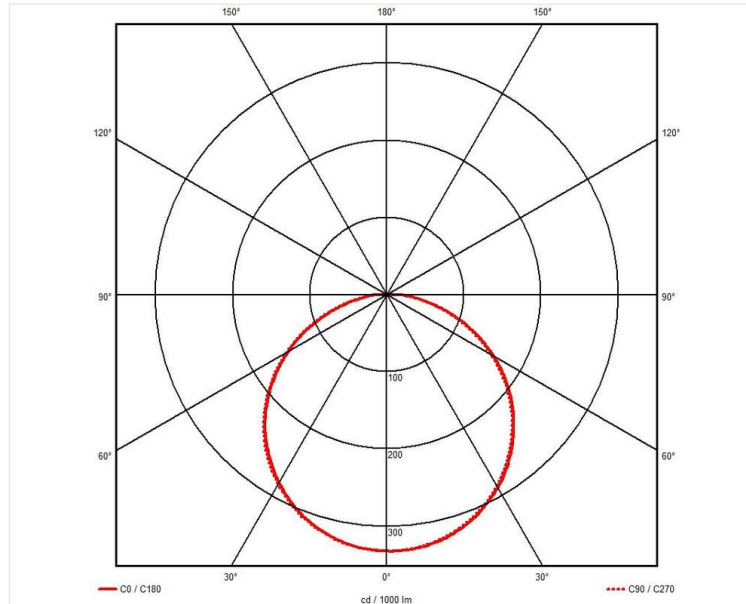
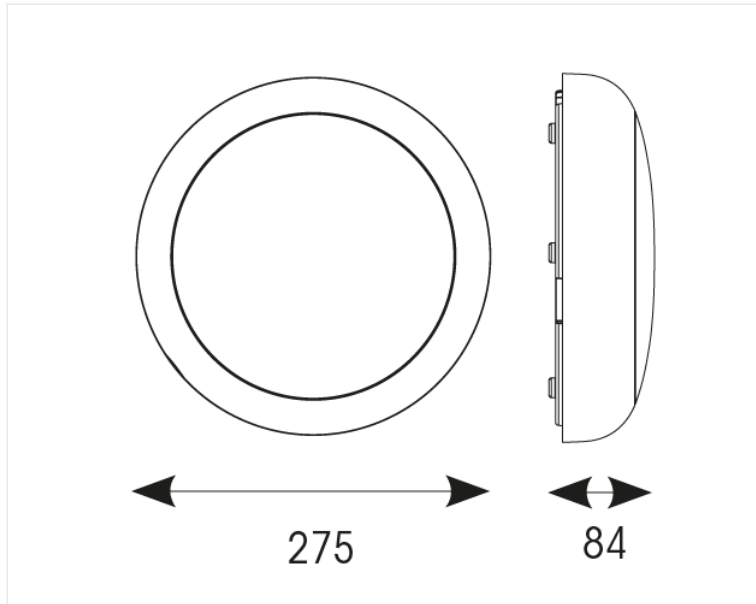


# Disco EVO

Part of the Bulkheads product category



**Model** Disco EVO 1 Emergency  
**Code** ADIS1/1/M3  
**Application** Ancillary, Commercial, Education, Healthcare, Hospitality, Residential, Retail



**Fast and Easy Install**  
 Twist-on diffuser and 2-part design with push-fit terminals allow quick and easy installation

**Speed-Optimised Packaging**  
 Packed with the base facing up and detached for a fast, hassle-free installation

**Secure Installation**  
 Secure and stable mounting now with four fixing points

**Slim and Efficient**  
 Up to 145lm/W inside a slender profile offers an efficient luminaire suitable for many applications

