



Adler



Part of the Emergency product category

Model Adler Exit Sign Maintained / Non-Maintained White
Code AADL/3M/W
Application Ancillary, Commercial, Education, Healthcare, Hospitality, Industrial, Retail

GENERAL INFORMATION

| | |
|----------------|------------|
| Input | 220-240V |
| Wattage | 2W |
| Operating Temp | 0°C - 40°C |
| CCT | 6500K |

MATERIAL INFORMATION

| | |
|------------------------|---------------|
| Main Material | Polycarbonate |
| Product Weight without | 0.765 kg |
| Packaging | |
| Colour / Finish | White |
| Height | 212 mm |

TECHNICAL INFORMATION

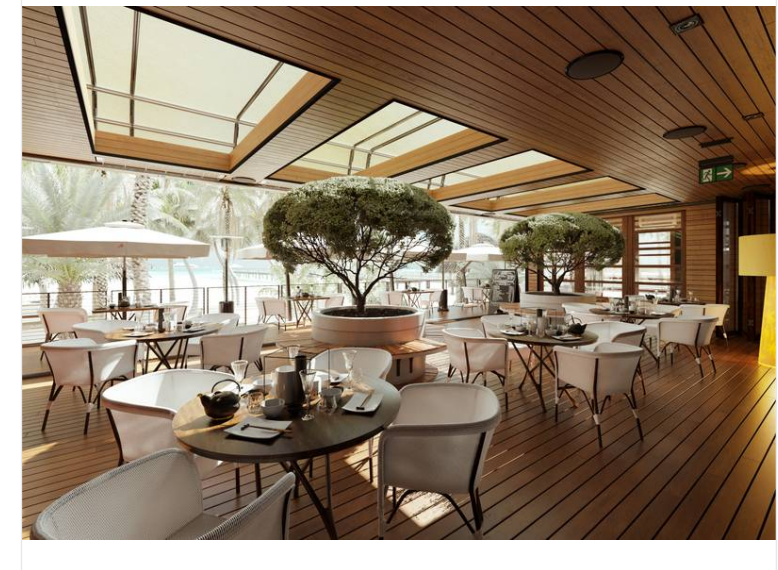
| | |
|--------------------------------|------------------------------------|
| Class Protection | 1 |
| Light Source | LED |
| SDCM (Initial Macadam) | 6 |
| CRI | 70 |
| Internal / External | Internal |
| Surface / Recessed / Suspended | Ceiling, Recessed, Suspended, Wall |
| Power Factor | 0.26 |
| L70 @ 25°C | L70 B50 50,000h |

PRODUCT FEATURES

- Light weight contemporary Ansell design, multiple install options LED Exit Sign
- Rotatable legends to reduce waste and increase flexibility
- One fitting that enables choice of five different mounting options: Suspension, Recessed, Ceiling surface, Wall surface, Side arm wall mounting
- 1 metre suspension cable supplied as standard
- LiFePO4 Lithium battery provides improved energy consumption, product reliability and lifetime

ACCESSORIES

| | |
|--------------|--------------------------------|
| AADL/WB/W | Adler Wall Bracket White |
| AADL/WB/BLK | Adler Wall Bracket Black |
| AADL/SRK/W | Adler Semi-Recessing Kit White |
| AADL/SRK/BLK | Adler Semi-Recessing Kit Black |





Adler



Part of the Emergency product category

- Model** Adler Exit Sign Maintained / Non-Maintained White
- Code** AADL/3M/W
- Application** Ancillary, Commercial, Education, Healthcare, Hospitality, Industrial, Retail

