

LED LinkLite Kits

- Available in 5 lengths: 300mm, 600mm, 900mm, 1200mm and 1500mm
- Separate power lead: 2000mm
- 4 x link lead options: 250mm, 450mm, 800mm and 1250mm
- LinkLites can be joined directly end-to-end
- Individual rocker switch
- Includes surface mounting brackets
- IP Rating: IP20
- Colour temperature: 3000K and 4000K
- Colour rendering index: >80
- Rated Life: 25,000 hours
- Options available:
 - Spare surface fixing kit for 5, 9 and 12W: **LXLPF2-LLFK2**
 - Spare surface fixing kit for 16 and 20W: **LXLPF2-LLFK2**



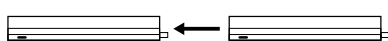
Part No.	Description	Wattage	Measurement L x W x H	Lumen Output	IP Rating	Colour Temperature
LinkLite						
LXLL5300LEDWW	LED LinkLite, 1ft	5W	300 x 22 x 36mm	370Lm	IP20	3000K
LXLL9600LEDWW	LED LinkLite, 2ft	9W	600 x 22 x 36mm	690Lm	IP20	3000K
LXLL12900LEDWW	LED LinkLite, 3ft	12W	900 x 22 x 36mm	920Lm	IP20	3000K
LXLL161200LEDWW	LED LinkLite, 4ft	16W	1200 x 22 x 36mm	1290Lm	IP20	3000K
LXLL201500LEDWW	LED LinkLite, 5ft	20W	1500 x 22 x 36mm	1560Lm	IP20	3000K
LXLL5300LEDNW	LED LinkLite, 1ft	5W	300 x 22 x 36mm	400Lm	IP20	4000K
LXLL9600LEDNW	LED LinkLite, 2ft	9W	600 x 22 x 36mm	750Lm	IP20	4000K
LXLL12900LEDNW	LED LinkLite, 3ft	12W	900 x 22 x 36mm	1000Lm	IP20	4000K
LXLL161200LEDNW	LED LinkLite, 4ft	16W	1200 x 22 x 36mm	1400Lm	IP20	4000K
LXLL201500LEDNW	LED LinkLite, 5ft	20W	1500 x 22 x 36mm	1700Lm	IP20	4000K

Leads	Description	Length
LXLLPL	Power Lead	2000mm
LXLLL250	Link Lead	250mm
LXLLL450	Link Lead	450mm
LXLLL800	Link Lead	800mm
LXLLL1250	Link Lead	1250mm

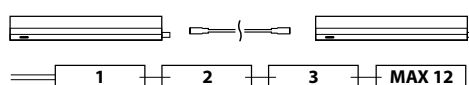


Link options

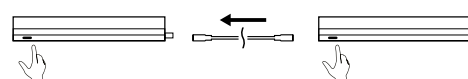
Direct link, end-to-end



Link lead connection (order separately)



Individual switching when connected



Email sales@luxna.co.uk



Web luxna-lighting.com