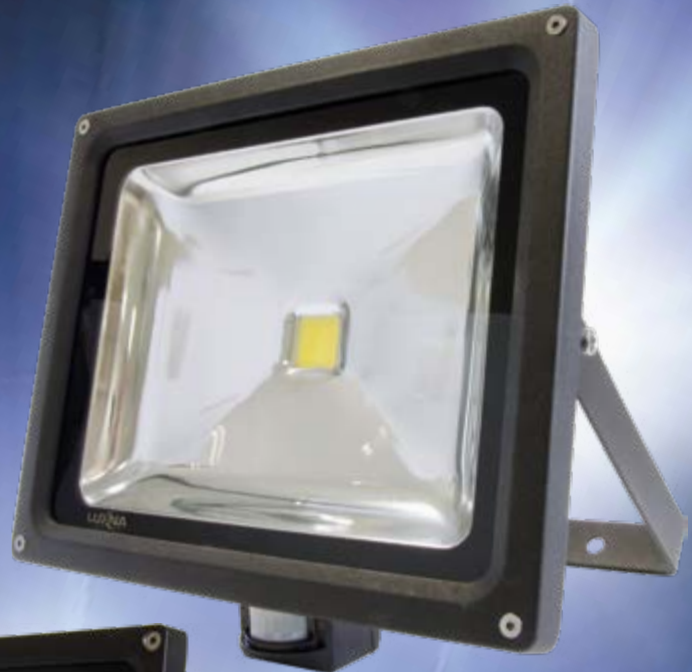


LED PIR Floodlights

- Energy saving range with adjustable PIR from 750 to 4,500 Lumen
- Latest long life COB LED technology
- Black aluminium die cast housing
- Beam spread: 120°
- Stainless steel fixing screws and cable gland
- Pre-fitted cable: 1 metre
- IP Rating, housing and PIR: IP65
- Colour temperature: 5000k
- Colour rendering index: >70
- Rated Life: 50,000 hours
- Operating temperature: -25°C to 45°C
- PIR functions:
 - Detection distance: Up to 12 metres
 - Detection range: 110°
 - Time delay: 5 seconds to 10 minutes
 - PIR override function



3 YEAR WARRANTY
LED
PIR Function
IP65

Part No.	Wattage	Measurement A x B x C x D*	Lumen Output	IP Rating	Colour Temperature
LXFL10WBV2-PIR	10W	114 x 86 x 100 x 170mm	750Lm	IP65	5000K
LXFL20WBV2-PIR	20W	180 x 140 x 105 x 210mm	1700Lm	IP65	5000K
LXFL30WBV2-PIR	30W	226 x 185 x 117 x 260mm	2600Lm	IP65	5000K
LXFL50WBV2-PIR	50W	288 x 235 x 125 x 300mm	4500Lm	IP65	5000K

*Measurement: A= Width, B= Height, C= Depth, D= Height (including bracket)



Email sales@luxna.co.uk



Web luxna-lighting.com