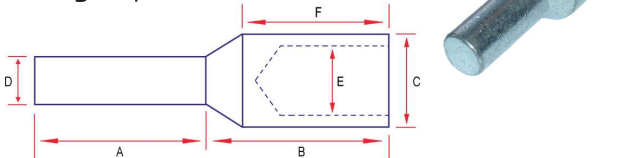


# Cable terminations

## Copper Reducing Pin Terminals

### Un-insulated Solid Reducing Copper Pin Terminal

**Material:** Electrolytic Copper  
**Finish:** Electro Tin Plated  
**Voltage:** up to 1000V

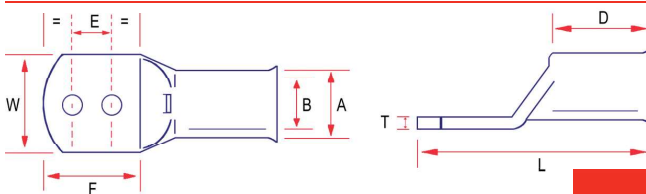


Part No.	Cond. Size mm <sup>2</sup>	Dimensions in mm					
		A	B	C	D	E	F
10USP	10	10	13	6.2	3.8	4.4	8.6
16USP	16	13	17	7.0	3.8	5.3	8.6
25USP	25	20	17	9.5	5.0	7.9	12.0
35USP	35	20	17	11.0	5.0	8.9	15.0
50USP	50	20	21	12.5	7.5	9.5	15.0
70USP	70	20	23	15.8	8.0	11.25	21.0
95USP	95	20	26	18.0	8.0	13.5	20.0
120USP	120	25	25	19.2	11.5	15.0	20.0
150USP	150	32	32	21.0	11.5	16.5	23.0
185USP	185	32	32	23.0	11.5	18.5	28.0
240USP	240	32	32	27.0	15.6	21.0	32.0
300USP	300	32	32	30.4	15.6	23.0	41.0

Sold in eaches.

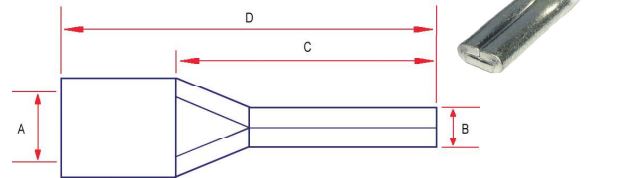
Alternative pin lengths/diameters are available to special order (subject to M.O.Q).  
 Special bespoke version to customer specification available – ask for details.

### Extended Palm 2 Hole Terminals



### Un-insulated Reducing Pin Terminal

**Material:** Electrolytic Copper  
**Finish:** Electro Tin Plated  
**Voltage:** up to 1000V



Part No.	Cond. Size mm <sup>2</sup>	Dimensions in mm			
		A	B	C	D
10UP	10	4.8	4.3	14.5	23.5
16UP	16	5.9	5.5	18.0	28.0
25UP	25	7.0	7.0	20.3	32.0
35UP	35	8.9	8.0	24.5	39.0
50UP	50	10.0	9.5	26.0	45.0
70UP	70	11.5	11.0	31.0	55.0

Sold in eaches.

See page 163 for recommended tooling. NOTE: UP Pins should only be crimped using an indent-style tool.

Alternative stud hole sizes, hole centres and blank palms are available to special order (subject to M.O.Q).

Part No.	Cond. Size mm <sup>2</sup>	Stud Hole	Dimensions in mm							
			A	B	W	E	F	D	L	T
10-6POI	10	6	6.9	4.6	11.0	16.0	34.0	10.0	50.0	2.0
16-6POI	16	6	8.0	5.6	11.0	16.0	34.0	11.0	52.0	2.2
25-6POI	25	6	9.5	7.0	13.5	16.0	34.0	13.0	56.0	2.4
35-6POI	35	6	11.0	8.2	15.5	16.0	34.0	18.0	57.0	2.8
50-6POI	50	6	11.9	9.5	17.0	45.0	75.0	18.0	83.0	2.5
70-12POI	70	12.5	15.0	11.5	21.2	45.0	75.0	18.0	105.0	2.0
95-12POI	95	12.5	17.0	13.5	24.3	45.0	75.0	24.0	111.0	3.5
120-12POI	120	12.5	19.0	15.0	27.2	45.0	75.0	27.0	115.0	4.0
150-12POI	150	12.5	21.0	16.5	30.0	45.0	75.0	27.0	120.0	4.5
185-12POI	185	12.5	23.0	18.5	33.5	45.0	75.0	30.0	125.0	4.5

For recommended tooling refer to TQ terminals.

Larger sizes available on request (subject to M.O.Q).

