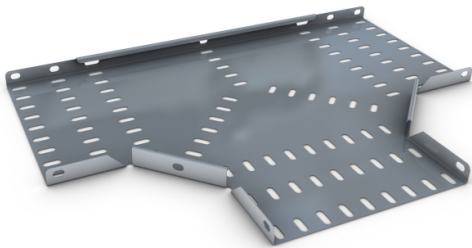


KLMR75ET

Tee Flat Equal for Medium Duty Tray Steel Pre-Galvanised 75mm



Technical

X (mm)	221
Y (mm)	148
Z (mm)	106
Radius (mm)	75

Datasheet generated from <https://onetimepim.com> last updated Wednesday, March 31, 2021 3:59:19 PM

