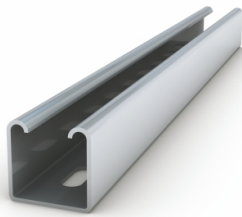


UC4141S/6

Channel Support Slotted Deep Steel Pre-Galvanised 41x41mmx6m



Technical

| | |
|-------------------|----|
| W (mm) | 41 |
| H (mm) | 41 |
| Length (M) | 6 |

Datasheet generated from <https://onetimepim.com> last updated Wednesday, March 31, 2021 3:59:23 PM

