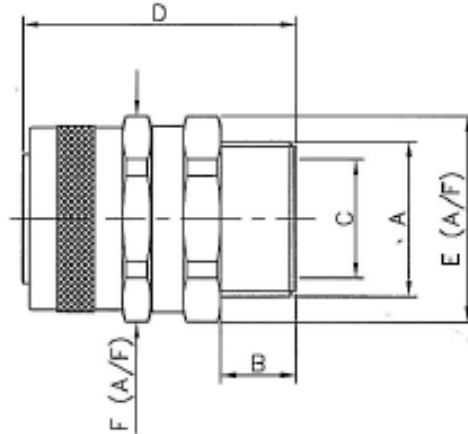



Technical Data Sheet:	DS565/0512
Product Description	Straight, swivel, external thread, nickel plated brass, FSU, FNU and LFHU conduit fitting.
Product Range	FSU - S Type fitting (Metric Threads)

Roman Way, Coleshill
Birmingham
B46 1HG, United Kingdom
Tel: 00 44 (0)1675 466900
Website: www.flexicon.uk.com



Material: Nickel Plated Brass
Colour: Self colour
Fire Performance: Inherently Low Fire Hazard 
IP Rating: • IP54
Applications: Suitable for knockouts and metric threaded entries. Two part fitting comprising of shell and body.
Features: • High tensile strength • Oil resistant • Corrosion resistant • Conforms to EN 61386 Note: also available in PG and stainless steel versions and fixed versions.
Temperature Performance: -50°C to +300°C

Conduit Size	Part No.	Metric Thread	Nominal Dimension (mm)				
			A	B	C	D	E
10	FSU10-M12-S	M12 X 1.5	8.0	5.6	30.2	13.0	13.0
12	FSU12-M16-S	M16 X 1.5	8.0	8.5	32.2	17.0	17.0
16	FSU16-M16-S	M16 X 1.5	10.0	11.5	34.2	20.0	20.0
16	FSU16-M20-S	M20 X 1.5	10.0	11.5	34.2	22.0	20.0
20	FSU20-M20-S	M20 X 1.5	10.0	15.3	35.5	24.0	24.0
25	FSU25-M25-S	M25 X 1.5	12.0	19.1	43.7	29.0	29.0
32	FSU32-M32-S	M32 X 1.5	13.0	26.2	48.0	38.0	38.0
40	FSU40-M40-S	M40 X 1.5	14.0	34.2	51.2	48.0	48.0
50	FSU50-M50-S	M50 X 1.5	15.0	44.8	54.2	58.0	58.0
63	FSU63-M63-S	M63 X 1.5	18.0	54.5	63.2	70.0	70.0

Compliance, Approvals & Accreditation;








 IEC EN 61386
 EN 61386 Classification Available on request
 COMPLIANT TO LUL STANDARD 1-085-A3
 London Underground Certificate No. 296

Typical Applications;

 Construction
  Rail
 Machinery and OEM's
 Defence

Errors, omissions and amendments excepted. As part of continuing product development Flexicon Ltd reserve the right to alter product specifications without prior notice. Data given is correct at time of compilation. Product specification and application data is for guidance only and does not constitute a warranty of any kind, either expressed or implied for Flexicon products or their suitability for a specific purpose. Third party approvals maybe limited to certain sizes within a product range.