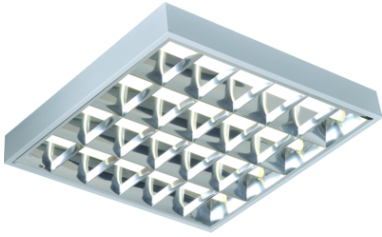


DATASHEET



SURF418EMHF

IP20 4x18W T8 CAT2 Surface Mounted Emergency Fluorescent Fitting

www.mlaccessories.co.uk

MLA PART CODE	SURF418EMHF
DESCRIPTION	IP20 4x18W T8 CAT2 Surface Mounted Emergency Fluorescent Fitting
NET WEIGHT (KG)	3.734
FINISH	White
DIMENSIONS (MM)	Length - 610 Width - 600 Projection - 80
CONSTRUCTION	Construction - Steel
CLASS	I
IP RATING	IP20
MAX. WATTAGE (W)	4x18
LAMP TECHNOLOGY	Fluorescent
LAMP BASE	T8
LAMP INCLUDED	No
LED COMPATIBLE	No
DIMMABLE	No
EMERGENCY	Maintained / Non-maintained / Switched
INPUT VOLTAGE	230V 50Hz
DRIVER	EFFICIENCY FULL LOAD - 90
BATTERY INCLUDED	Yes
WARRANTY	1year(s)
WARRANTY INFORMATION	(excluding battery)
MANUFACTURED IN ACCORDANCE WITH	BS EN 60598
ORIGIN OF MANUFACTURE	China
DECLARATION OF CONFORMITY (HELD ON FILE)	Yes
EAN	5055559114987

Date Created: 25/04/2022 15:20