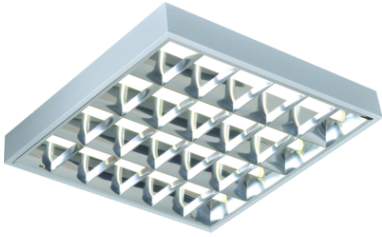


DATASHEET



SURF418HF

IP20 4x18W T8 CAT2 Surface Mounted Fluorescent Fitting

www.mlaccessories.co.uk

MLA PART CODE	SURF418HF
DESCRIPTION	IP20 4x18W T8 CAT2 Surface Mounted Fluorescent Fitting
NET WEIGHT (KG)	3.145
FINISH	White
DIMENSIONS (MM)	Length - 610 Width - 600 Projection - 80
CONSTRUCTION	Construction - Steel
CLASS	I
IP RATING	IP20
MAX. WATTAGE (W)	4x18
LAMP TECHNOLOGY	Fluorescent
LAMP BASE	T8
LAMP INCLUDED	No
LED COMPATIBLE	No
DIMMABLE	No
INPUT VOLTAGE	230V 50Hz
DRIVER	EFFICIENCY FULL LOAD - 90
WARRANTY	1year(s)
MANUFACTURED IN ACCORDANCE WITH	BS EN 60598
ORIGIN OF MANUFACTURE	China
DECLARATION OF CONFORMITY (HELD ON FILE)	Yes
EAN	5055559115731

Date Created: 25/04/2022 15:20

