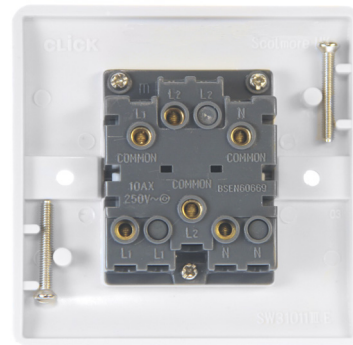


Product Code: CMA020

Description: 10A 3 Pole Fan Isolation Plate Switch



General Information

Dimensions	86mm (W) x 86mm (H) x 9.5mm (D)	
Plate Design & Finish	Rounded Profile Polar White	
Materials	Front Plate & Rocker Switch: Urea Terminals: Brass Contacts: Silver "on-lay" Copper / Brass	Rear Housing: Nylon Terminal Screws: Steel & Yellow Passivated Internal Busbars: Formed Pressed Brass
Maximum Voltage	250V~ 50Hz	
Load Rating	10A	
Plate Fixing Centres	60.3mm	
Terminal Size	3.5mmø	
Terminal Torque	0.5Nm	
Terminal Capacity	4 x 1.5mm ² or 2 x 2.5mm ²	
Triple Pole	Yes	
Product Markings	Isolator, On, Off	
Ingress Protection	IP20	
Back Box Depth	16mm Minimum	
Termination Type	Screw	
Operational Temperature	-5°C to +40°C	
Warranty	20 Years	
Standards	BS EN 60669-1:1999 +A1:2002 +A2:2008	

Additional Information

Ensure that the mains supply is isolated before commencing installation and refer to the circuit diagram with the relevant product.
Bare earth cables must always be covered with appropriate sleeving and wired to the earth terminal.
All white moulded accessories are manufactured using Urea Formaldehyde, which has similar inherent properties to antimicrobial additives that inhibit the growth of infectious diseases as well as anti-viral properties against enveloped and non-enveloped viruses.
All products have been independently tested with 99.9% of enveloped viruses and 92% of non-enveloped viruses killed off whilst achieving a 99.9% kill rate across all four types of the strains of bacteria - MRSA, E-Coli, Salmonella, and Klebsiella Pneumoniae.