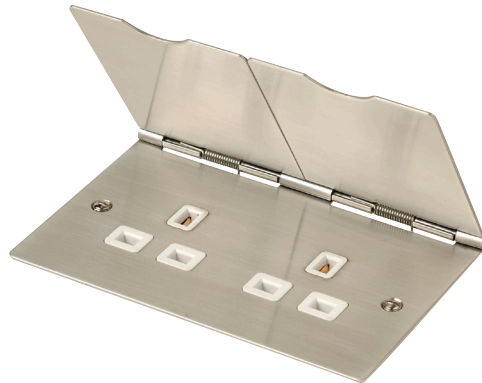


Product Code: FS032SS

Description: 13A 2 Gang Floor Socket Outlet



General Information

Dimensions	146mm (W) x 93mm (D) x 5mm (H)	
Finish	Stainless Steel	
Materials	Plate & Lid: Stainless Steel	Insert: Urea
	Internal Busbars: Brass	Terminals: Brass
	Terminal Screws: Steel and Yellow Passivated	Earth Bar: Mild Steel
Maximum Voltage	250V~ 50Hz	
Load Rating	13A	
Plate Fixing Centres	120.6mm	
Terminal Size	5mmø	
Terminal Torque	2.0Nm	
Terminal Capacity	3 x 2.5mm ² or 2 x 4mm ²	
Switched	No	
Twin Earth Terminals	Yes	
Ingress Protection	IP20	
Back Box Depth	35mm Minimum	
Termination Type	Screw	
Operational Temperature	-5°C to +40°C	
Warranty	10 Years	
Standards	BS 1363-2: 2016 +A1: 2018	

Additional Information

Ensure that the mains supply is isolated before commencing installation and refer to the circuit diagram with the relevant product.
Bare earth cables must always be covered with appropriate sleeving and wired to the earth terminal.