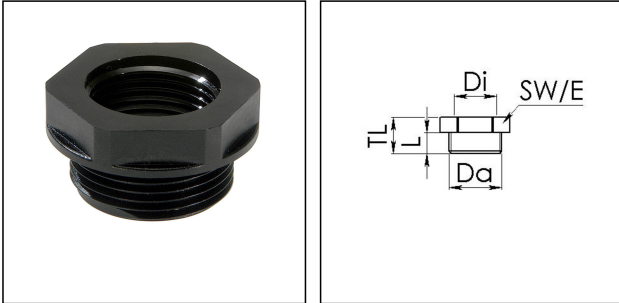


## KRM 25/20 BK

Reduction adaptor, polyamide, RAL 9005, M25 / M20



Products may differ in size, colour and appearance to those shown. If you require further information or customisation, please contact us directly.



<b>Material</b>	Polyamide, fibre reinforced
<b>Temp. range min</b>	-40 °C
<b>Temp. range max</b>	100 °C
<b>Glow wire test</b>	650 °C
<b>Thread type outer</b>	M
<b>Ø outer thread</b>	25
<b>Lead outer</b>	1,5
<b>Length screw-in thread L</b>	10 mm
<b>Thread type inner</b>	M
<b>Ø inner thread</b>	20
<b>Lead inner</b>	1,5
<b>Total length TL</b>	17 mm
<b>Key width SW</b>	29 mm
<b>Collar diameter (E)</b>	32 mm
<b>Product Color</b>	RAL 9005
<b>Order no. RAL 9005</b>	10063807
<b>Type</b>	KRM 25/20 BK
<b>Packing unit</b>	100
<b>EAN number</b>	4007685638074
<b>Tariff number</b>	39269097
<b>ETIM-Classification</b>	EC000441

10.11.2022

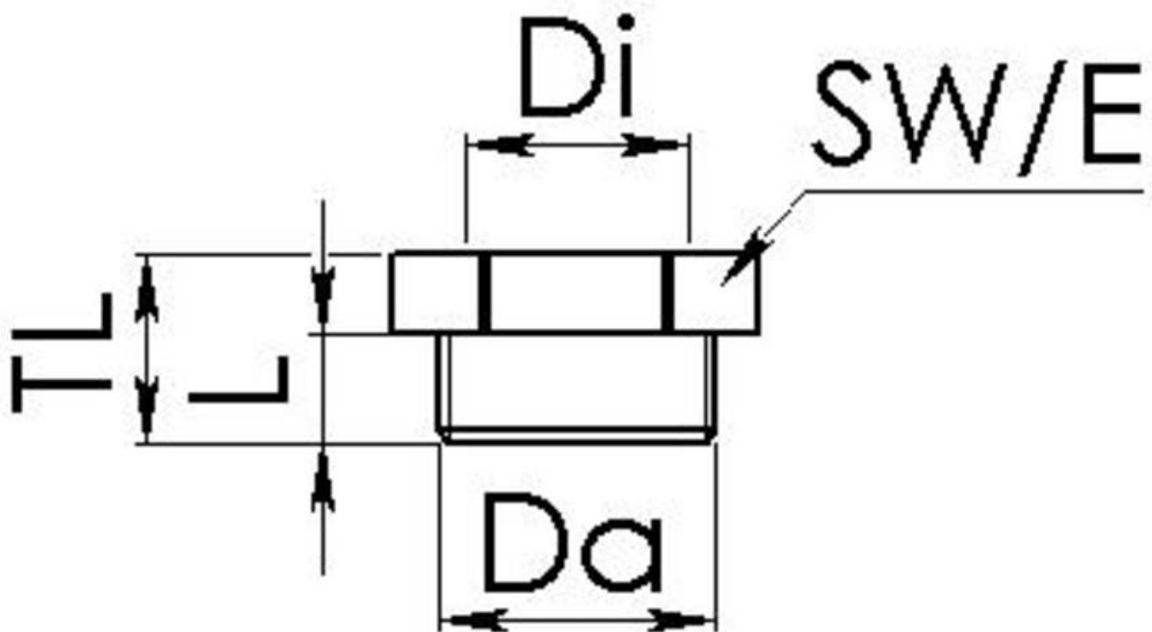
Your Contact:

**WISKA Hoppmann GmbH**

Kisdorfer Weg 28 · 24568 Kaltenkirchen · Germany

☎ +49-4191-508-0 · 📠 +49-4191-508-209

contact@wiska.de · www.wiska.com



Your Contact:

**WISKA Hoppmann GmbH**

Kisdorfer Weg 28 · 24568 Kaltenkirchen · Germany

☎ +49-4191-508-0 · 📠 +49-4191-508-209

contact@wiska.de · www.wiska.com