

**PRODUCT CODE: CS24**  
CHANNEL SPRING NUT



**DESCRIPTION**

M6 Short Spring Nut

**FINISH**

BZP

**MATERIAL**

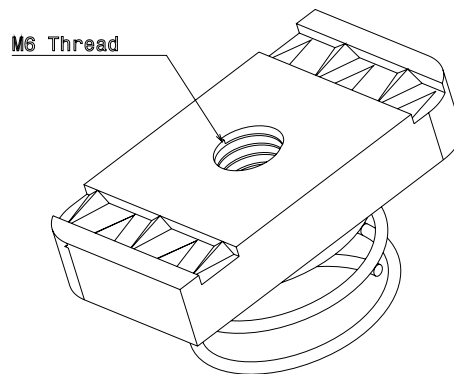
Steel

**PACKAGING**

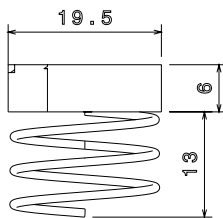
Packed in qty 100

**ADDITIONAL NOTES**

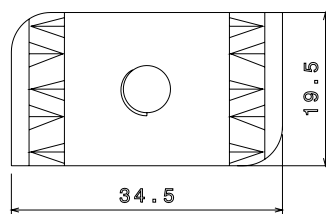
Produced to comply with the requirements of BS6946 Metal Channel Support Systems  
For use with 21mm depth channel  
Compliant to LU Standard 1-085 (for use on surface & sub-surface locations)



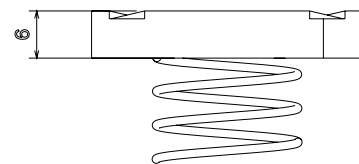
Isometric view



Front view



Top view



Side view