

OIL FILLED RADIATOR WITH TIMER



Specifications

Rated Voltage Range: AC220-240V 50Hz

7 Fin Oil Filled Radiator 1500W

3 heating powers: 600W/900W/1500W

9 Fin Oil Filled Radiator 2000W

3 heating powers: 800W/1200W/2000W

11 Fin Oil Filled Radiator 2500W

3 heating powers: 1000W/1500W/2500W

THIS PRODUCT IS ONLY SUITABLE FOR WELL INSULATED SPACES OR OCCASIONAL USE

WARNING: PLEASE READ THIS INSTRUCTION MANUAL CAREFULLY BEFORE USE AND KEEP IN A SAFE PLACE FOR FUTURE USE OR HAND TO THE APPROPRIATE PERSON FOR FUTURE REFERENCE.

When using an electrical appliance, basic safety precautions should always be observed, including the following:

- 1) **This appliance can be used by children aged from 8 years and above and persons with reduced physical, sensory, or mental capabilities**, lack of experience or knowledge if they have been given supervision or instruction concerning the use of the appliance in a safe way and understand the hazards involved. Children shall not play with the appliance. Cleaning and user maintenance shall not be made by children without supervision.
- 2) Children should be supervised to ensure that they do not play with the appliance.
- 3) Connect the appliance to a single phase AC supply of the voltage specified on the rating plate.
- 4) **Do not cover this heater with any clothing or materials of any nature, this will cause danger of overheating and potential fire.**
- 5) Never leave the heater unattended while it is in use. Always turn the product to the OFF position and unplug it from the electrical outlet when not in use.
- 6) Extreme caution is necessary when any heater is used by or around children, the infirm or vulnerable people, or elderly people and whenever the heater is left operating and unattended.
- 7) The heater must not be placed immediately below an electrical socket-outlet.
- 8) Do not run the power cord under carpeting and do not cover the cord with throw rugs, runners or similar. Arrange the cord away from traffic areas and where it will not be tripped over.
- 9) Do not operate the heater with a damaged cord or plug, or after the heater malfunctions, has been dropped, or damaged in any manner.
- 10) If the supply cord is damaged, it must be replaced by the manufacturer, the service agent or a similarly qualified person to avoid a hazard.
- 11) **Avoid the use of an extension cord as this may overheat and cause a risk of fire.**
- 12) Use the heater in a well-ventilated area. Do not insert or allow objects to enter any ventilation or exhaust opening. To prevent a possible fire, do not block air intakes or exhaust openings in any manner. Do not use on soft surfaces e.g a bed, where openings may become blocked. Use the heater on flat, dry, even surface only.
- 13) Do not place this heater near flammable materials, surfaces or substances, as there may be a risk of fire. Keep any flammable materials, surfaces or substances at least 1m from the front of the product and keep them away from the sides and rear.
- 14) Do not use the heater in any areas where petrol, paint or other flammable liquids are stored e.g. garages or workshops as hot, arcing or sparking parts are inside the heater.
- 15) Do not use this heater in the immediate surroundings of a bath, shower or a swimming pool. Never place the heater where it may fall into a bathtub or in other water containers.
- 16) This heater is hot when in use. To avoid burns and personal injury, do not let bare skin touch hot surfaces. If provided, use handles when moving the product.
- 17) This heater is filled with a precise quantity of special oil.
- 18) Repairs requiring opening of the oil container are only to be made by the manufacturer or the service agent who should be contacted if there is an oil leakage.
- 19) Regulations concerning the disposal of oil when scrapping the appliance have to be followed.
- 20) The heater should not be used in a room of which the floor area is less than 5m².
- 21) The cord should not be placed near the hot surface of the appliance.
- 22) NOTE: It is normal that when the heaters are turned on for the first time or when they are turned on after having not been used for a long period of time they may have noise inside. This will disappear when the heater has been on a short while.

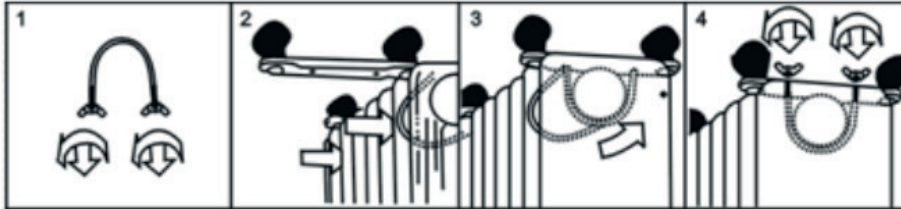
OSOFR15T / OSOFR2T / OSOFR25T Series



Assembly Instructions

The heater is packaged with the feet unattached. You must attach them before operating the heater.

WARNING: Do not operate without feet attached. Operate the heater only in an upright position (feet on the bottom, controls on the top), any other position could create a hazardous situation.

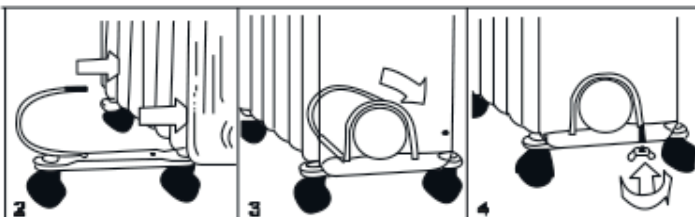


- 1) Place the radiator body upside-down on a scratch-free location making sure it is stable and will not fall over.
- 2) Screw off the wing nuts from the U-shaped bolt provided, attach the U-shaped bolt to the U-facing flange between first and second fins (near the front cover).
- 3) To attach the castor mounting plate to the radiator body you should insert the threaded ends of the U-shaped bolt in the holes on the castor mounting plate.
- 4) Screw the wing nuts back to the U-shaped bolt and fasten the wing nut properly.

Note: do not over tighten as this may cause damage to the radiator flange.

- 5) Screw off the spherical nut from the castor, align the shaft to the hole of the castor mounting plate, insert in, and screw on the spherical nut.
- 6) Repeat 2, 3, 4 and 5 on the rear of radiator for mounting of the rear castors.

Note: the rear castors must be mounted between the end two fins.



Use Of Timer

- 1) Regulate the time on the timer according to the clock by turning it Clockwise (DO NOT TURN IT ANTI-CLOCKWISE)
- 2) The timer has a small switch with the below functions:
I = Unit is always On
⊕ = Timer function is ON
- 3) Set the timer to ⊕ position. There are 96 small plastic pins on the timer, each correspond to 15 minute intervals. Push the pins outwards corresponding to the time you want the heater to turn ON and push the pins inwards corresponding to the time you want the heater to turn OFF



CAUTION:

- A. Do not use the timer function while the heater is unattended.
- B. The heater will not operate if the timer is set to the ⊕ position and the pins are not activated according to the times required. (See point 3 above)
- C. If the heater loses its electricity supply, e.g. Switched off at the mains socket or in the event of a power failure, the timer should be reset after the power comes on again.
- D. The pilot light will be on when the timer is set to the ON position or when the timing function is activated.

Instructions For Use

- 1) Before using the heater make sure that it is on a flat and stable surface. Damage may occur if it is placed on an incline or decline.
- 2) Set all the controls to the OFF position and insert the plug into a socket-outlet. Be sure that the plug fits firmly.
- 3) Rotate the thermostat knob clockwise to MAX position and switch the heater on as follow: switch I for low heat, switch II for medium heat and both switches on for high heat.
- 4) When your room reaches the desired temperature, slowly rotate the thermostat knob anti-clockwise until the pilot light goes out. The thermostat can now be left at this setting. As soon as the room temperature has dropped below the set temperature, the unit will switch on automatically until the set temperature has been reached again. In this way the room temperature remains constant with the most economical use of electricity.
- 5) If you want to change the room temperature setting, rotate the thermostat knob clockwise to raise the temperature, or anti-clockwise to lower it.
- 6) This heater includes an overheat protection system which will shuts off the heater when parts of the heater are getting excessively hot.
- 7) To completely shut the heater off turn all the controls to OFF and remove the plug from the socket-outlet.

Maintenance

- 1) Always remove the plug from the socket-outlet and allow the radiator to cool down before cleaning the heater.
- 2) To clean the radiator wipe with a soft, damp cloth.

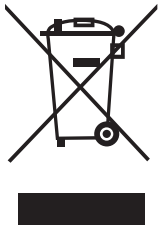
WARNING:

Do not immerse the heater in water.

Do not use any cleaning chemicals such as detergents and abrasives.

Do not allow the interior to get wet as this could create a hazard.

- 3) To store the heater, wind the cable around the bobbin and place in a clean, dry area.
- 4) In case of malfunction or doubt do not try to repair the radiator yourself as it may result in a fire hazard or electric shock.



Environment

This symbol indicates that this product must not be placed in general household waste. It should be sent to a separate recycling facility for recovery, check Local Authorities for details.

By responsible recycling and separating this product from other household waste it will help protect the environment and human health, as the volume of waste sent to incinerators or landfill sites will be reduced and natural resources conserved.

MADE IN PRC

AER, Zac du Caillou, Rue Jules Verne, 69630, Chaponost, France
YESSS House, Unit B Foxbridge Way, Normanton, WF6 1TN, UK

